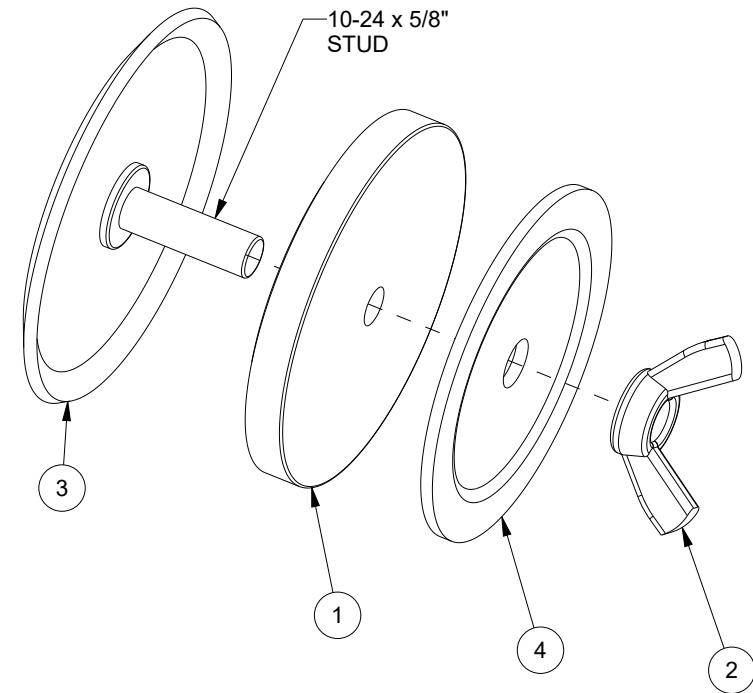
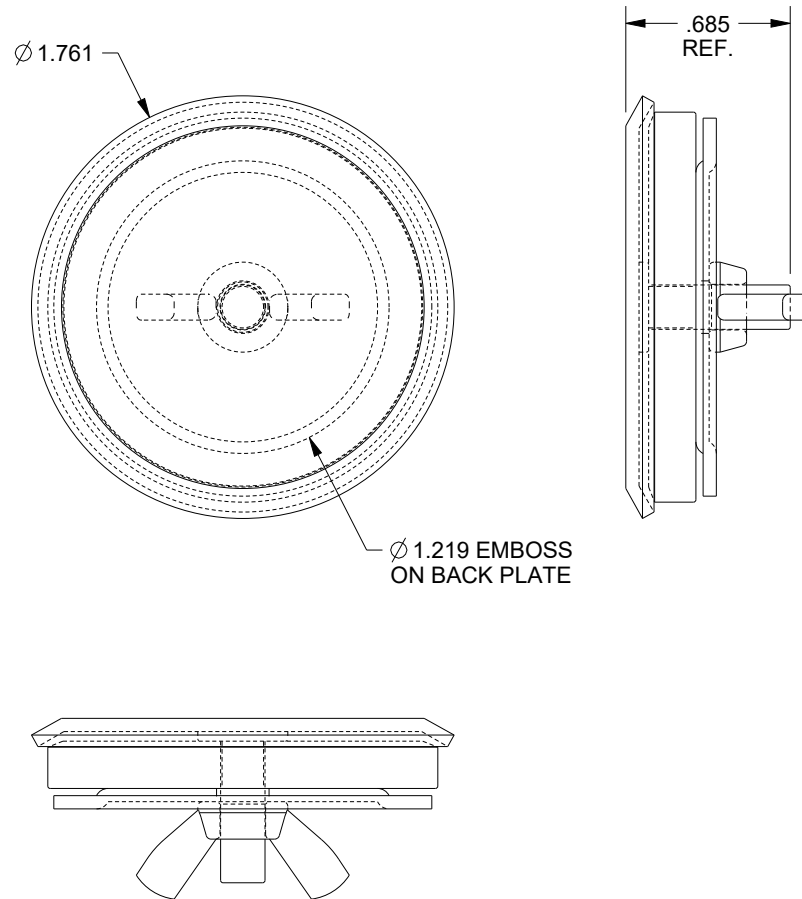


BILL OF MATERIAL


ITEM	QTY	PART DESCRIPTION	PART I.D.
1	1	Die Cut Gasket - Large Hole Plug - .197 X 1.625 X .173 - VNN	100674
2	1	Wing Nut - 10-24 - Steel - Zinc Plated Clear	100895
3	1	Hole Plug Face Plate - 1.761 X 0.13 - Steel - Zinc Plated Clear	105297
4	1	Hole Plug Base Plate - 1.575 X 0.09 - Steel - Zinc Plated Clear	105298



HOLE PLUG FOR 30MM PUSHBUTTON CUTOUT
EXPLODED VIEW

PART DESCRIPTION:

Bolt Pack - Hole Seal Assembly - 1.75 X .125 - 10-24 - Steel - SCE-09 - QTY. 25

DRAWN BY: Sherven	CUSTOMER: SAGINAW CONTROL & ENGINEERING		
DATE: 4/19/24	PART NUMBER: SCE-ASPB-09-25		REV: --
0.55" COLD ROLLED STEEL MATERIAL UNLESS SPECIFIED	CUSTOMER I.D.: SCE2	 Your Enclosure Source®	
	SHEET: 1 OF 1		