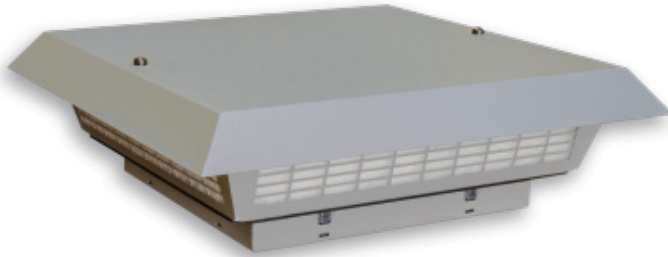


TOP MOUNT FILTER

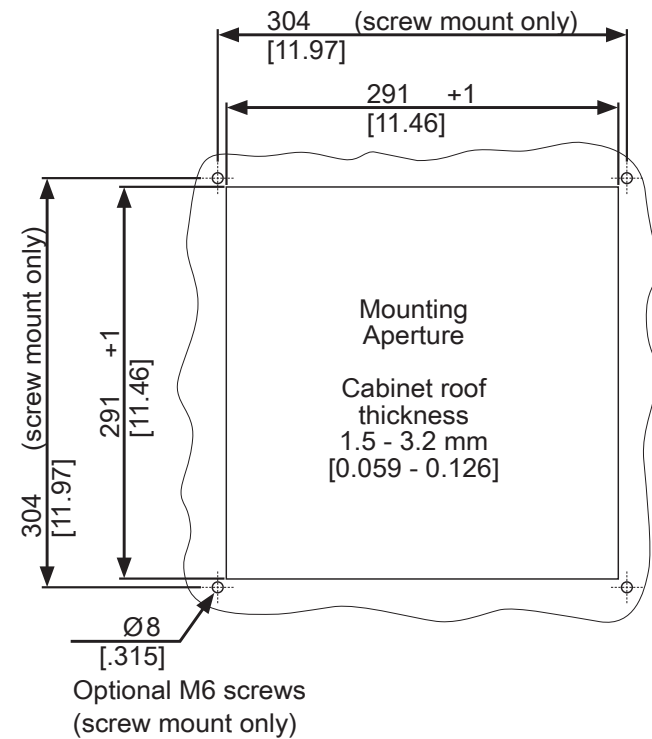
DESCRIPTION

Color:	RAL 7035
Material:	Mild steel, powder coated
Ingress protection:	NEMA 12
Approvals:	CE, cURus UL Recognized Type 12
Min enclosure depth:	≥ 14



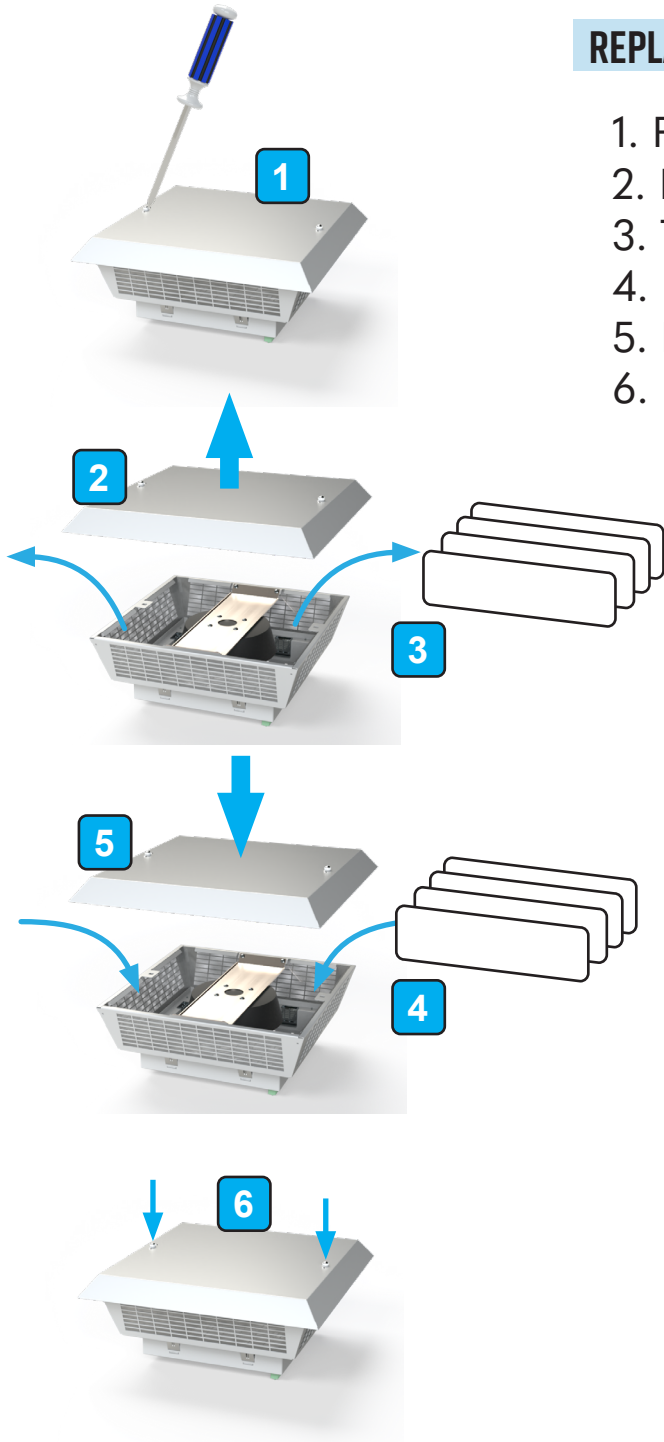
Do not use reverse flow fans

CUTOUT DIMENSIONS

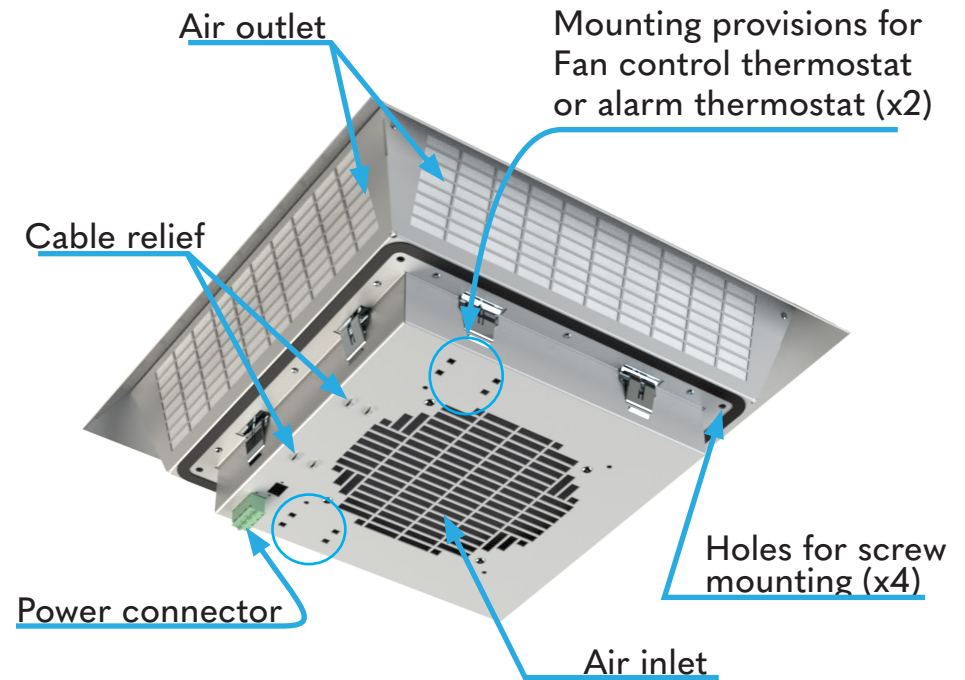


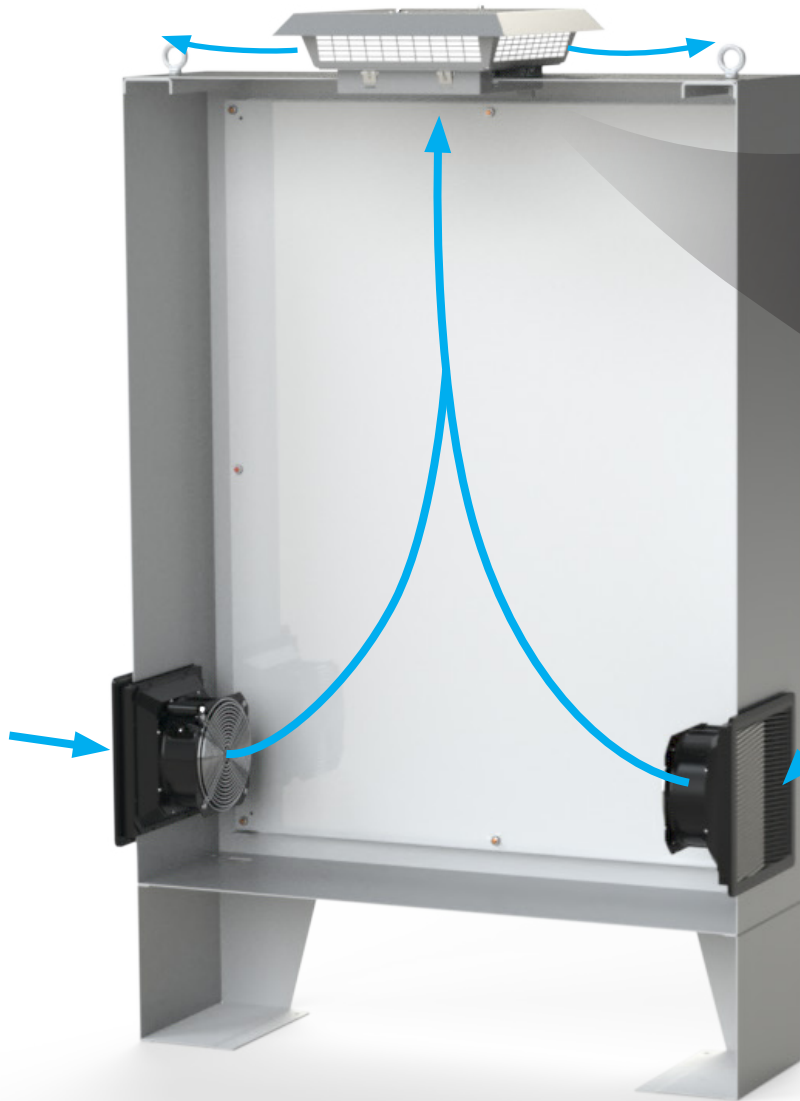
REPLACE OLD FILTERS

1. Remove screws on top.
2. Remove top.
3. Take old out filters.
4. Put new filters in.
5. Place top back on.
6. Replace screws.



BREAKDOWN





To secure top mounted filter, push until all locks click into place.

Screw mounting:
Minimum tightening torque: 45 in-lb

Air Direction

Standard flow allows cool air to come in through SCE Nema 12 fans installed in lower part of enclosure, on either side or door, and then push out the rising warmer air through the top mounted filter.

Nema 12 fans

Black



Light Gray



SCE offers many sizes and colors of Nema 12 rated fans to fit your needs.



Do not use reverse flow fans