

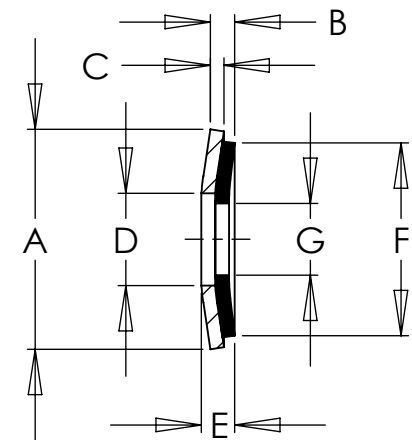
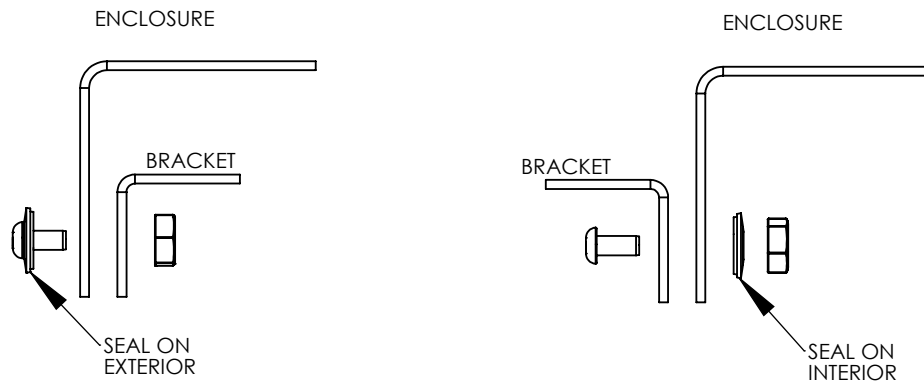
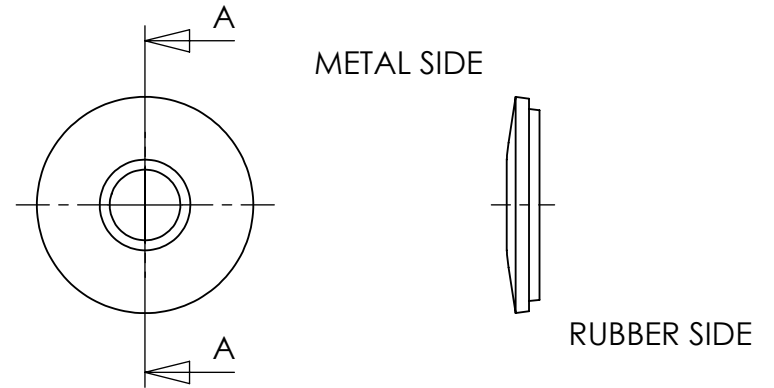
# SEALING WASHER ASSEMBLY



Your Enclosure Source®



**SEALING WASHERS**  
 INTENDED FOR USE ON THE FLAT SURFACE OF  
 ENCLOSURES RATED TYPE 2, 3, 3R, 3S, 4, 4X AND 12



SECTION A-A

| Package Qty. | Purchase Part ID | Suitable to seal Fastener Size | Material  | A     | B     | C     | D     | E     | F     | G     | Max Recommended Hole Size | Torque Range = (inch Lbs) |     |
|--------------|------------------|--------------------------------|-----------|-------|-------|-------|-------|-------|-------|-------|---------------------------|---------------------------|-----|
|              |                  |                                |           | Ref   | Ref   | Ref   | Ref   | Ref   | Ref   | Ref   |                           | Min                       | Max |
| 50           | 115096           | SCE-BSW38SS                    | Stainless | 0.725 | 0.090 | 0.036 | 0.425 | 0.120 | 0.685 | 0.325 | 0.440                     | 75                        | 150 |
| 50           | 115097           | SCE-BSW31SS                    | Stainless | 0.625 | 0.090 | 0.036 | 0.330 | 0.110 | 0.575 | 0.275 | 0.344                     | 25                        | 100 |
| 50           | 115098           | SCE-BSW25SS                    | Stainless | 0.496 | 0.090 | 0.036 | 0.260 | 0.103 | 0.450 | 0.210 | 0.281                     | 25                        | 75  |
| 50           | 115099           | SCE-BSW19SS                    | Stainless | 0.496 | 0.090 | 0.036 | 0.260 | 0.103 | 0.450 | 0.180 | 0.250                     | 25                        | 75  |