

OK SERIES PLINTH INSTALLATION GUIDE

OK Plinth (ZAK) BOM		
Item	Qty	Part Description
1	2	Front/Rear Plate (ZAK)
3	4	Corner Element
4	4	M6x14 Screw
5	4	M12x20 Hex Socket Screw
7	4	Flanged Cage Nut

OK Plinth (FLK) BOM		
Item	Qty	Part Description
2	2	Side Flange (FLK)
6	8	M6x10 Hex Screw
7	8	Flanged Cage Nut

Tools Required: T30 Torx Bit, Driver or Screwdriver, 10mm extended socket, 8mm Hex Bit.

Installation Instructions:

1. Corner Element Assembly

- Insert a flanged cage nut (Item 7) into the middle square cutout on the outer face of each corner element (Item 3).
 - Insert from the back until fully clipped into place (Figure 2).
- Align each corner element under the OKK Bottom Element:
 - The square cutouts for the side flange (Item 2) face outward.
 - The open face of the corner element should also face outward (Figure 3).
 - The pre-installed locator fastener (circled in red ○) will seat into the bottom element's corresponding slot.
- Fasten the corner element to the bottom using an M12x20 screw (Item 5) through the top circular cutout (Figure 2).
 - Torque Specifications: 515 in-lbs per M12 screw.

2. Side Flange (FLK) Assembly

- Insert four flanged cage nuts (Item 7) into the square cutouts of the side flange (Item 2):
 - Two on top, two on bottom, leave the middle cutout empty.
 - Nuts must be installed from the inside (Figure 4).
- Position the side flange so the open face is inward.
- Attach each side flange to the corner elements:
 - Use two M6x10 screws (Item 6) per corner.
 - Insert screws through the corner elements' circular cutouts and fasten into the cage nuts on the side flange (Figure 5).
 - Torque Specifications: 38 in-lbs per M6 screw.

3. Front/Rear Plate (ZAK) Assembly

- Attach each plate (Item 1) using two M6x14 screws (Item 4).
- Fasten through the front/rear plates into the centered cage nut in the corner element (Figure 6).
 - Torque Specifications: 38 in-lbs per M6 screw.



Figure 1

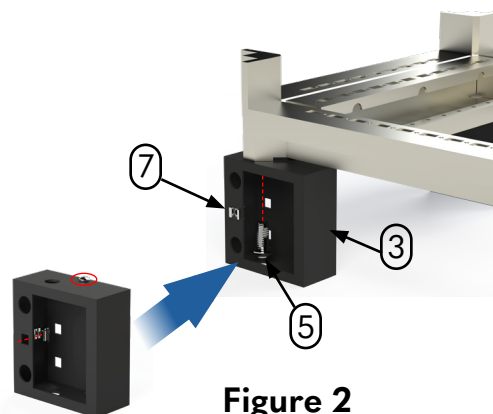


Figure 2

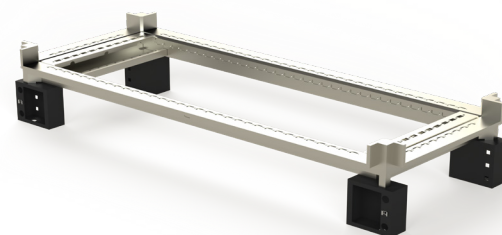


Figure 3



Your Enclosure Source®

ADDITIONAL DETAILS

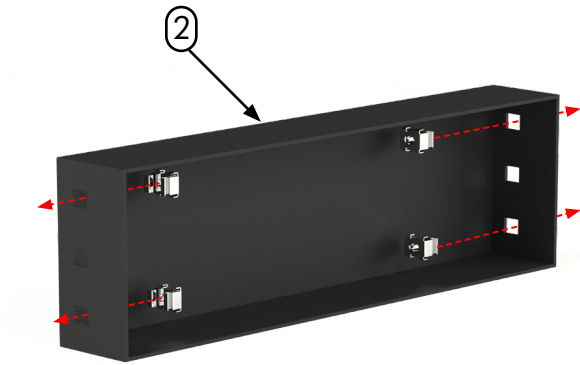


Figure 4

Side Flange Cage Nut Detail:

Install the four flanged cage nuts from the inside of the side flange. Leave the center cutout on either side empty. Push the cage nuts until it fully clips into the square cutout (Figure 4).

Side Flange (FLK) Detail:

Insert the M6 hex screws (eight total) through the corner element circular top and bottom side cutouts. The screws will secure the side flanges and corner elements together using the side flange cage nuts (Figure 5).

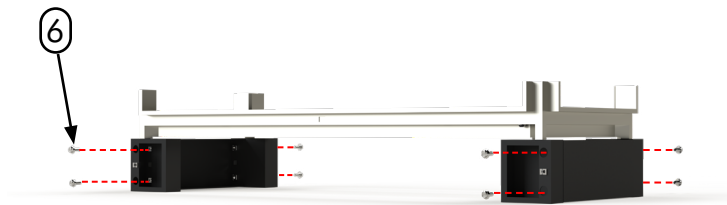


Figure 5

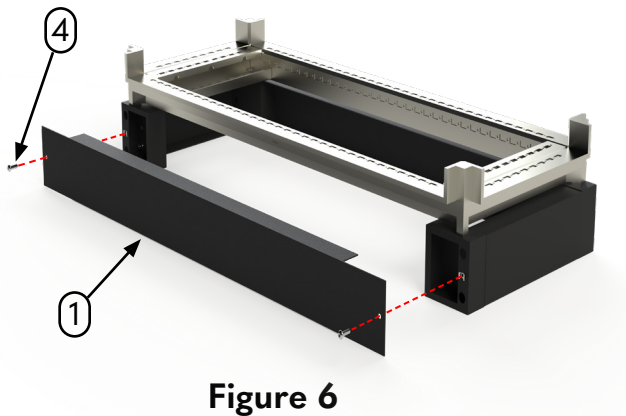


Figure 6

Front/Rear Plate (ZAK) Detail:

Insert the M6 torx screws (four total) through the front and rear plate, fastening with the center corner element's cage nut (Figure 6).

