

OK SERIES INNER MODULAR ELEMENTS GUIDE

OK Modular Screwed Cover BOM	
Item	Part Description
1	Flanged Cage Nut
2	M6x16 Countersunk Screw

OK Modular Hinged Cover BOM	
Item	Part Description
3	Outer Hinge
4	Inner Hinge
5	Hinge Pin
6	M6 Countersunk Screw
7	M6 Nut

OK CPR & MTK BOM	
Item	Part Description
8	Flanged Cage Nut
9	M6x16 Hex Screw

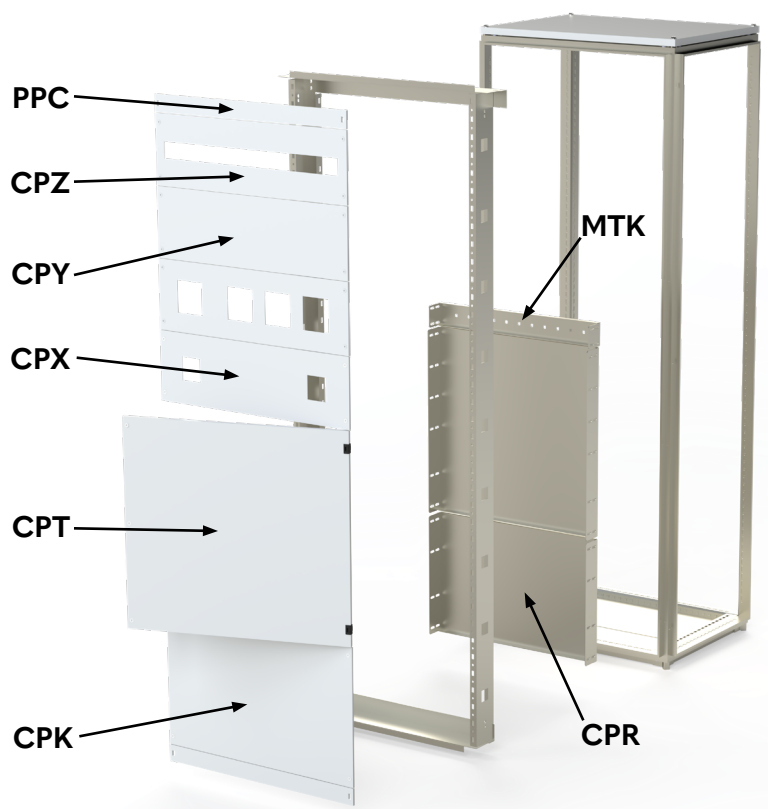


Figure 1

Modular Screwed Cover Assembly

Tools Required: T30 Torx Bit, Driver or Screwdriver

- Insert flanged cage nuts into the rear of the TMK's front rail.
 - Ensure nut spacing matches the screw cutouts on the cover.
- Align the cover with the TMK rail and secure using M6 countersunk screws (Item 2). See Figure 2.
 - Torque Specifications: 45 in-lbs per M6 screw.

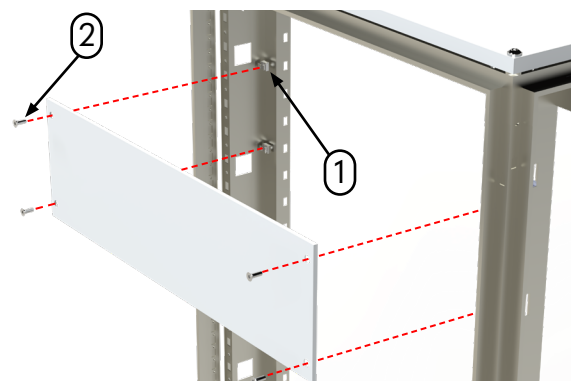


Figure 2



Your Enclosure Source®

Modular Hinged Cover Assembly

Tools Required: T30 Torx Bit, Driver or Screwdriver, 10mm extended socket or crescent wrench

- Insert outer hinge (Item 3) into the hinge cutout of the cover.
- Insert inner hinge (Item 4) into the outer hinge.
 - Ensure hinge pin slots are aligned.
 - Ensure the bolt guide on the inner hinge faces inward.
- Insert hinge pin (Item 5) from the top until the pin flange seats against the outer hinge (Figure 3).
- Align the hinge assembly with the TMK rail slots.
- Secure hinge assemblies using M6 countersunk screws (Item 6) through the inner hinge and a M6 nut (Item 7) at the rear of the TMK rail. See Figure 4.
- Torque Specifications: 70 in-lbs per M5 screw
- For the non-hinged side, follow the **Modular Screwed Cover Assembly** steps.

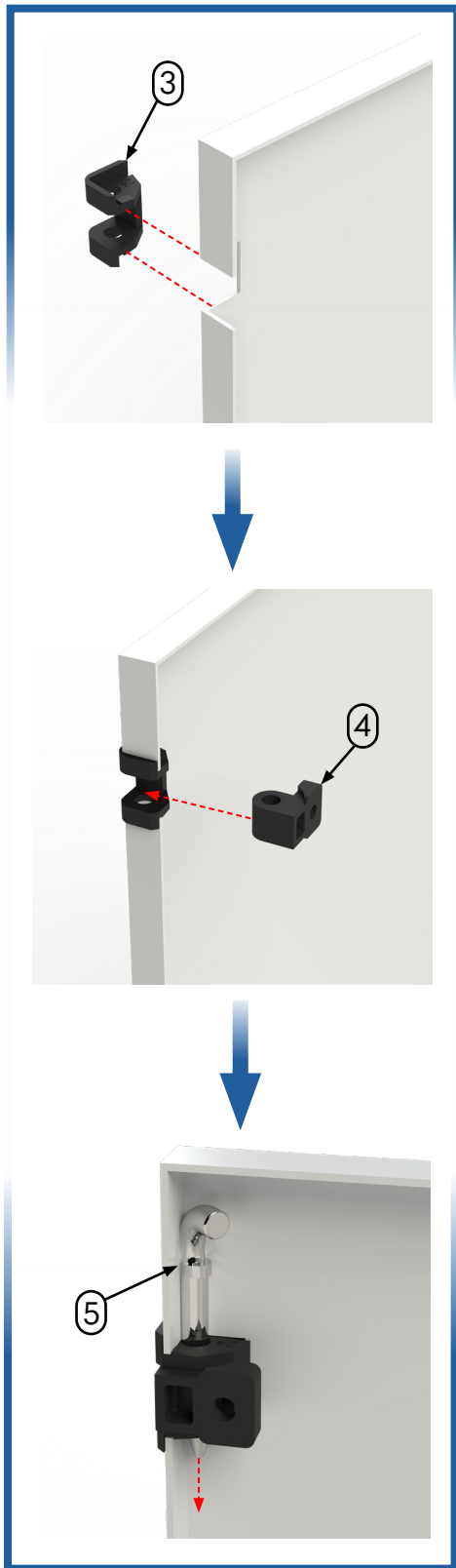


Figure 3

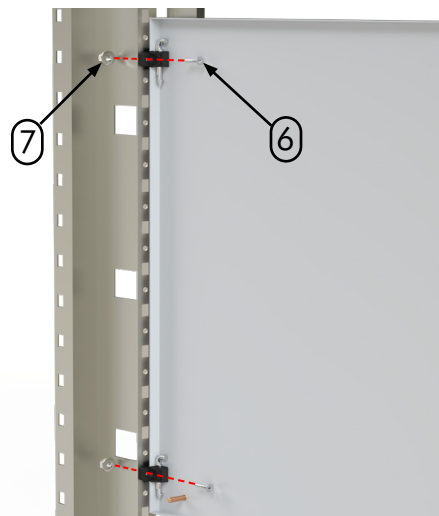


Figure 4



Adjustable Mounting Plate (CPR) & Din Rail Support (MTK) Assembly

Tools Required: T30 Torx Bit, Driver or Screwdriver, 10mm extended socket or crescent wrench

- The CPR (Adjustable Mounting Plate) and MTK (Din Rail Supports) are mounted using the same procedure.
- Insert flanged cage nuts (Item 8) into the TMK from the outer side of the internal mounting rail (Figure 5).
- Use M6x16 hex screws (Item 9) to fasten the CPR or MTK to the TMK via the installed cage nuts (Figure 6).
 - Torque Specifications: 70 in-lbs per M6 screw.
- The CPR and MTK can be oriented facing either the door opening or the back of the enclosure.
- Either mounting channels on the CPR & MTK can be used to achieve the required spacing for your application.

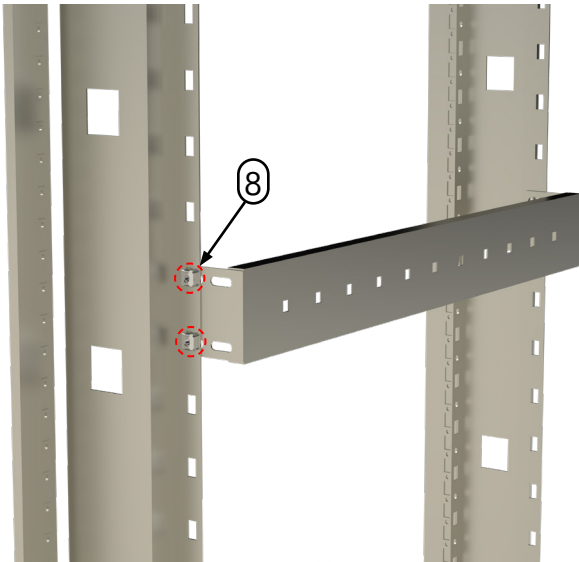


Figure 5

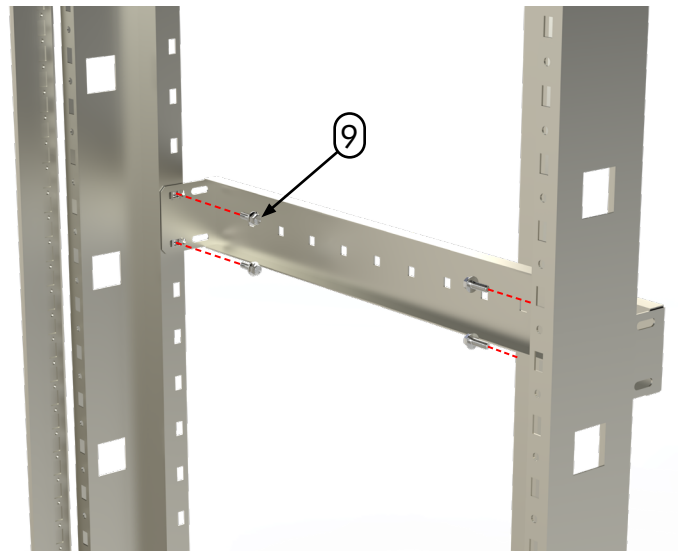


Figure 6



Your Enclosure Source®