

OK SERIES SWING PANEL KIT INSTALLATION GUIDE

OK DBI BOM		
Item	Qty	Part Description
1	1	Inner Door
2	2	Vertical Uprights
3	2	Upper/Lower Fixing Rails
4	2	Quarter Turn Latch
5	2	Quarter Turn Lock Nut
6	3	Outer Hinge
7	3	Inner Hinge
8	3	Hinge Pin
9	3	M6x10 Hex Screw
10	4	M6 Nut
11	7	M6 Washer
12	8	Cage Nut
13	12	M6x14 Torx Screw



Figure 1

DBI Vertical Upright Assembly

Tools Required: T30 Torx Bit, Driver or Screwdriver.

- Install four cage nuts (Item 12) into both the left and right MTK vertical rails (Figure 7).
 - Top and Bottom Cage Nuts: Position 5 cutout spaces from the top and bottom of the MTK rails.
 - Middle Cage Nuts: Place 20 cutout spaces below the top cage nut and above the bottom cage nut.
 - Ensure 25 cutout spaces between the two middle cage nuts.
- Align the vertical uprights (Item 2) with the installed cage nuts on the MTK vertical rails.
 - Ensure obround cutouts align with the MTK rails and circular hinge cutouts are towards the back internal of the enclosure.
- Secure each vertical upright using four M6x14 screws (Item 13). See Detail A.
 - Torque Specifications: 70 in-lbs per M6 screw.

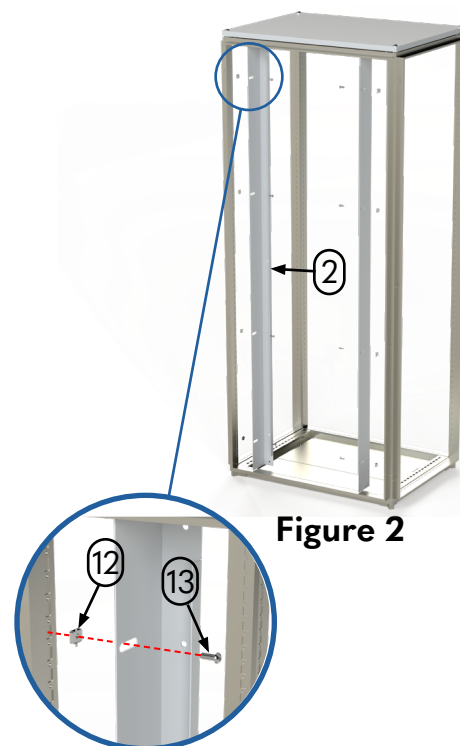


Figure 2

Detail A



Your Enclosure Source®

DBI Fixing Rail & Hinge Assembly

Tools Required: T30 Torx Bit, 10mm Extended Socket, Driver or Screwdriver, Crescent Wrench

Upper and Lower Fixing Rail Installation (Item 3):

1. Slide each fixing rail from the rear of the vertical uprights (Item 2) until contact.
 - Align obround cutouts of the fixing rail with the vertical upright circular cutouts
 - Ensure obround cutouts are towards the internal rear of the enclosure.
2. Secure each fixing rail using two M6x14 screws (Item 13), M6 washers (Item 11), and M6 nuts (Item 10). See Figure 3.
 - Insert the M6 screw through the front circular cutout on the vertical upright.
 - From the back of the fixing rail, place a washer, then secure with an M6 nut on each screw. See Detail B.
 - Torque Specifications: 70 in-lbs per M6 screw.

Hinge Installation:

1. Slide the outer hinge (Item 6) into the hinge cutout of the inner door (Item 1).
 - Align the hinge profile with the cutout shape.
2. Insert the inner hinge (Item 7) into the outer hinge.
 - Ensure the inner hinge flange faces towards the center of the door.
3. Insert the hinge pin (Item 8) from the top of the hinge assembly. See Figure 4.
 - **Important:** Repeat for all three hinges before mounting onto the vertical uprights.

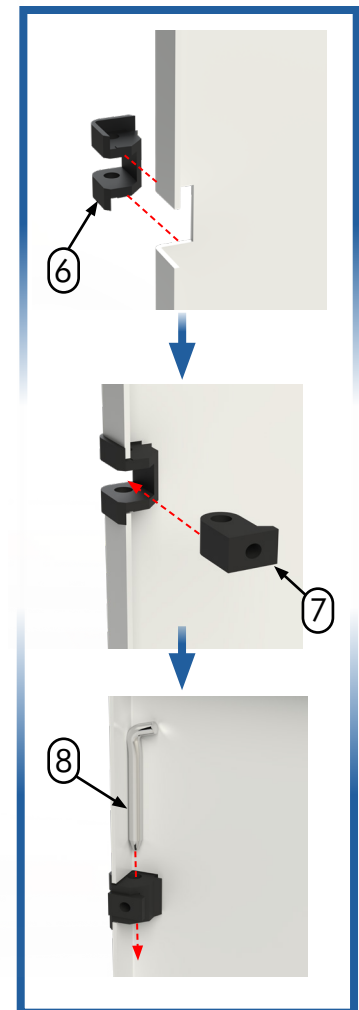
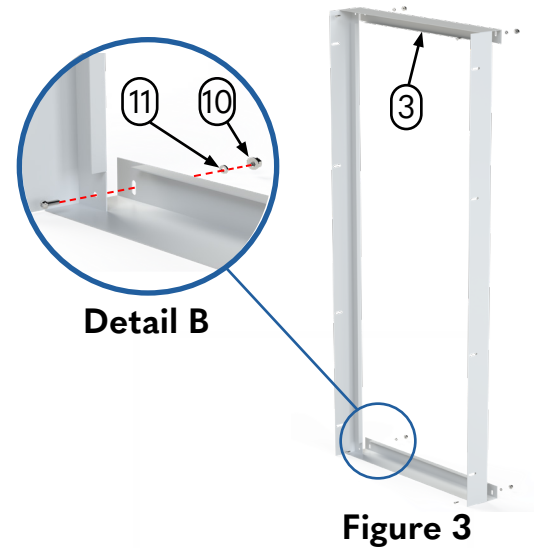


Figure 4



DBI Inner Door & Quarter Turn Assembly

Tools Required: 10mm Extended Socket, Driver or Screwdriver

Inner Door Installation:

1. Attach inner door hinges to the vertical upright (Item 2).
 - Align the previously installed hinges on the inner door with the three circular cutouts on the vertical upright.
2. Secure each hinge using one M6x10 hex screw (Item 9) and M6 washer (item 11). See Figure 5
 - Insert the M6 screw from the rear of the vertical upright, placing the washer between the screw and upright surface.
 - Fasten directly into the inner hinge (Item 7). See Detail C.
 - Torque Specifications: 70 in-lbs per M6 screw.

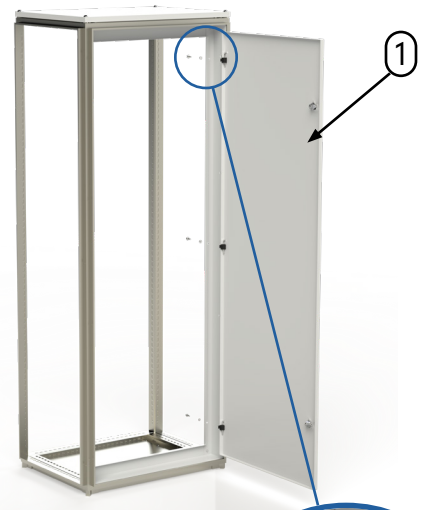
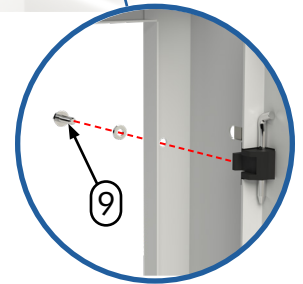


Figure 5



Detail C

Quarter Turn Installation:

1. Insert the quarter turn latch (Item 4) at a 45° angle into the quarter turn cutout on the inner door.
 - Slightly rotate the latch as needed to guide the flange through the cutout.
 - Ensure the latch sits flush against the door's exterior surface.
2. Slide the quarter turn lock nut (Item 5) over the latch flange from the interior side.
 - Tighten until the nut is flush against the inside surface of the door. See Figure 6.
 - Ensure the quarter turn locks by rotating counter clockwise for right hinge orientations.

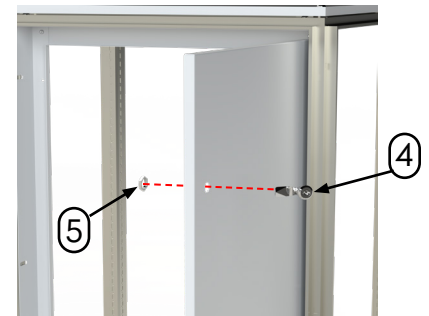


Figure 6

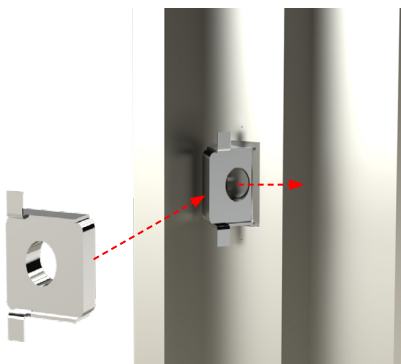


Figure 7

Installing Cage Nuts Detail:

Insert the cage nut (Item 12) into frame. Slide flush with the frame (Figure 7).



Your Enclosure Source®