

# OK SERIES DISCONNECT DOOR INSTALLATION GUIDE

OK Left Door BOM		
Item	Qty	Part Description
1	1	Left Disconnect Door
2	4	Hinge
3	4	Hinge Pin
4	4	Door Hardware Gasket
5	4	M6x16 Screw
6	4	Cage Nut

**Tools Required:** T30 Torx Bit, Driver or Screwdriver

## Left Disconnect Door Installation Instructions:

### 1. Preparation

- Ensure the [Top, Bottom, and Frame Kit assembly](#) is complete.

### 2. Hardware Cutout Alignment

- Ensure vertical frame rails are aligned correctly per the [OK series frame installation guide](#).

### 3. Install Cage Nuts

- Insert the supplied cage nuts (Item 6) at a 45° angle and seat flat against the left side of the frame with the flanges facing toward the door opening. The cage nut should be aligned with the built-in door hinge. For a detailed view, refer to Figure 2.

### 4. Attach Hinges

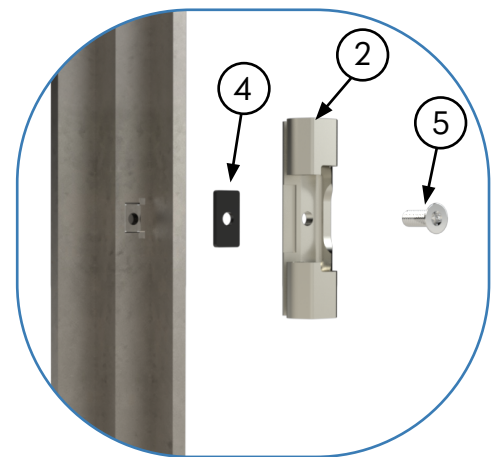
- Using the supplied M6 screws (Item 5), place a gasket (Item 4) between the hardware and the frame to mount the hardware. Refer to Detail 1 for the hinge assembly.
- Torque Specifications: 98 in-lbs per M6 screw.
- Hinges (Item 2) must be installed with the flat face of the hinge facing the flat edge of the door opening (Detail 1). The door attaches to the front flange and is hinged on the left side.

### 5. Mount the Door

- Align the door hinge with the hinge assembly, shown in Detail 1, so the hinge pin (Item 3) is able to insert from the top and secure the door (Item 1). Refer to Figure 3.
- Ensure the pin is fully seated.



**Figure 1**



**Detail 1**



Your Enclosure Source®



**Figure 2**

### **Installing Cage Nuts:**

Insert the cage nut (Item 6) into frame.  
Slide flush with the frame.



**Figure 3**

### **Pin Installation:**

Insert hinge pin (Item 3) through the door hinge and hinge assembly.  
Ensure the pin is seated completely. Pins may require force to insert completely.

**\*For enclosures with height greater than 1600 mm, insert topmost hinge pin from the bottom.**



*Your Enclosure Source*<sup>®</sup>

# RIGHT DISCONNECT DOOR INSTALLATION

## Right Disconnect Door Installation Instructions

### 1. Install Cage Nuts, Hinges, and Door

- Attach the door hinges as shown on page 1 but mirrored and attached on the right side of the door.
- Mount disconnect door as described previously.

### 2. Door Latches

- Using the supplied M6 screws (Item 12), place a gasket (Item 11) between the hardware and the frame to mount the hardware. Refer to Detail 2.
- **Important:** Follow the correct Door Latch (Item 10) orientation for proper function. Refer to Figure 6.
- Top two latches will be face-up. Bottom two latches will be face-down.

OK Right Door BOM		
Item	Qty	Part Description
7	1	Right Disconnect Door with Disconnect Cutout
8	4	Hinge
9	4	Hinge Pin
10	4	Door Latch
11	8	Door Hardware Gasket
12	8	M6x16 Screw
13	8	Cage Nut
14	4	Flange M6 Nut
15	2	Double Bit Keyed Quarter-Turn Latches
16	2	Earth Nut
17	4	T30 M6 Button Head
18	2	Gasketed Bracket
19	1	SCE-DBES Bolt Pack

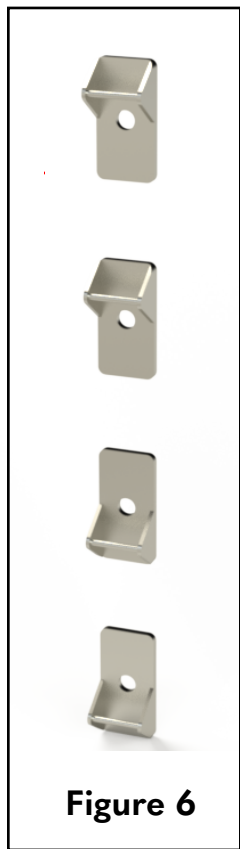


Figure 6

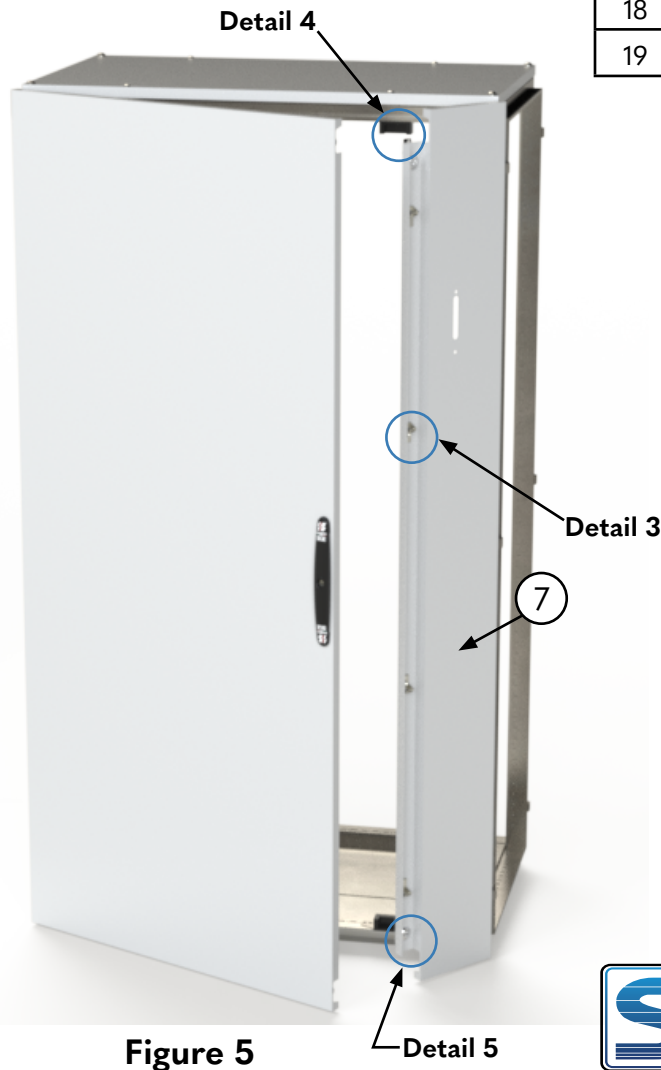
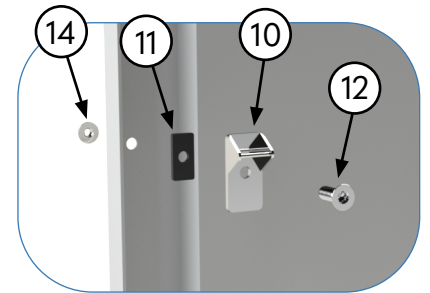


Figure 5



Detail 3



Your Enclosure Source®

## Right Disconnect Door Installation Instructions Continued

### 4. Install Gasketed Bracket

- From the right side of the enclosure, install the supplied cage nuts (Item 16) into the 5th and 9th cut-outs on the bottom frame. Insert at a 45° angle and seat flat against the frame with the flanges facing the enclosure sides. Refer to Figure 9.
- Align the gasketed bracket (Item 18) so the cage nuts are visible through the bracket holes.
- **Important:** Verify the door flange fits inside the gasketed bracket to ensure a proper door seal.
- Install the T30 button head screws (Item 17) and tighten. Refer to Figure 9.
- Torque Specifications: 66 in-lbs per T30 screw.
- Repeat **"4. Install Gasketed Bracket"** for the top bracket.

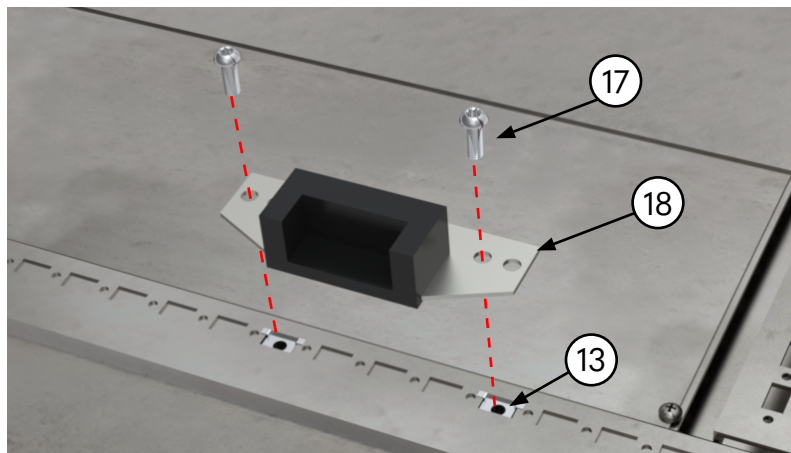


Figure 9

### 5. Install Quarter-Turn Latches

- Take the double quarter-turn latches (Item 15) and insert one into the top and bottom holes on the outside of the right disconnect door. If the latch is aligned to the cutout properly it does not take much force to insert it. Refer to Figure 10.
- **Important:** Ensure the latch locked position faces the gasketed bracket and the unlocked position faces the non-hinged side of the door.
- Take the earth nut (Item 16) and, from the back of the door, install it over the quarter-turn latch and hand-tighten. Refer to Figure 11.

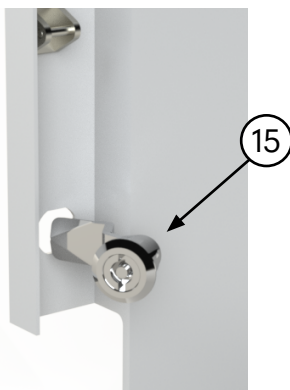


Figure 10

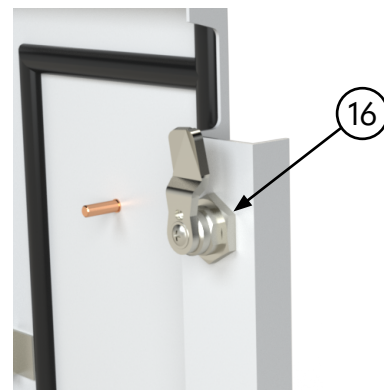


Figure 11

# OK Series Defeater Kit Installation Instructions

## 1. Install Bracket Arm

- On the right disconnect door, insert a Flanged Bolt (Item 23) through the hole to the right of the disconnect cut-out. From the backside of the door, install a Flange Nut (Item 21) and tighten. Install the Bracket Arm (Item 25) with the prongs facing the door face. Install a Lock Nut (Item 20) and tighten while allowing the bracket arm to rotate freely. Refer to Figure 13.
- Important:** The Mounted Operator Disconnect Handle is not included.

SCE-DBES Bolt Pack BOM		
Item	Qty	Part Description
20	1	Lock Nut
21	1	Flange Nut
22	2	Machine Screw
23	1	Flanged Bolt
24	1	Bracket Hook
25	1	Bracket Arm

## 2. Install Bracket Hook

- On the left disconnect door, align the Bracket Hook (Item 24) with the bent edge toward the hinge side, as seen in Figure 12.
- As a general rule, align the top point of the triangle with the Bracket Arm bolt. Minor adjustments may be required. Insert the Machine Screws (Item 22) into the obrounds. Refer to Figure 13.
- Adjust the bracket hook height so the Bracket Arm locks the door when the disconnect handle is engaged.
- Tighten the machine screws.
- Torque Specifications:
  - 45.6 - 91.2 in-lbs for nuts and bolt.
  - 19.2 - 38.4 in-lbs for Machine Screw.



Figure 12

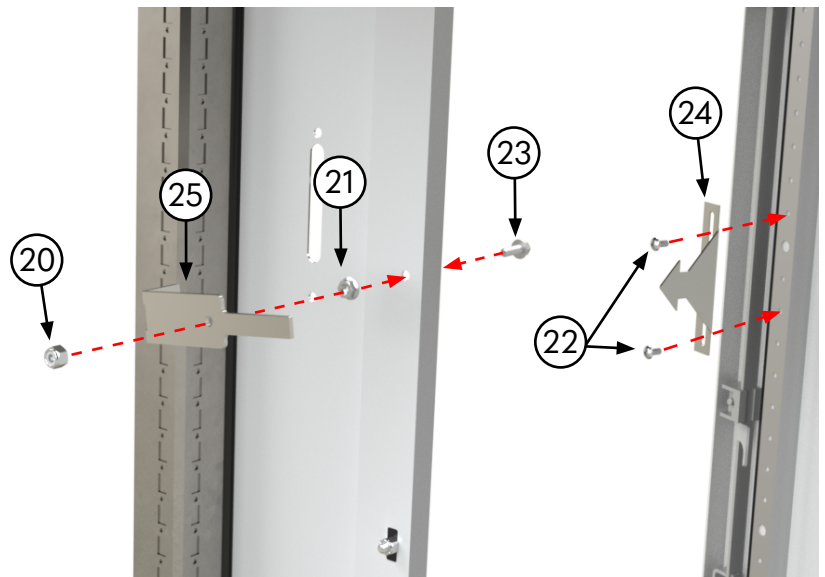


Figure 13