

# OK SERIES MAIN DOOR INSTALLATION GUIDE

OK Door BOM		
Item	Qty	Part Description
1	1	Blind Door (DBE or DTE)
2	1	Top, Bottom, & Frame Kit
3	4	Hinge
4	4	Hinge Pin
5	4	Door Latch
6	8	Door Hardware Gasket
7	8	VITI M6x16 Screw
8	8	Cage Nut

**Tools Required:** M6 Torx Bit, Driver or Screwdriver

## Installation Instructions:

### 1. Unpack Components

- 1 pre-assembled door (DBE or DTE).
- 1 assembled enclosure frame.
- Door hardware (OK BOM).

### 2. Hardware Cutout Alignment

- Ensure all four door hardware cutouts are aligned and facing the same direction as stated in the [OK series frame installation guide](#).

### 3. Install Cage Nuts

- Insert the supplied cage nuts (Item 8) at a 45° angle and seat flat against the frame with the flanges facing toward the door opening. For a detailed view, see Figure 4 on page 2.

### 4. Attach Hinges and Latches

- Using the supplied M6 screws (Item 7), place a gasket (Item 6) between the hardware and the frame to mount the hardware. Use Detail 2 for the latch and Detail 3 for the hinge assembly.
- **Important:** Follow the correct latch (Item 5) orientation for proper function (Figure 5).
- Torque Specifications: 98 in-lbs per M6 screw (Item 7).
- Hinges (Item 3) must be installed with the flat face of the hinge facing the flat edge of the door opening (Detail 3). The doors attach to the front flange and can be hinged on either the right or left side to control the swing.

### 5. Mount the Door

- Align the door hinge with the hinge assembly (Item 3) so the hinge pin (Item 4) is able to insert from the top and secure the door (Figure 6).
- Ensure the pin is fully seated.

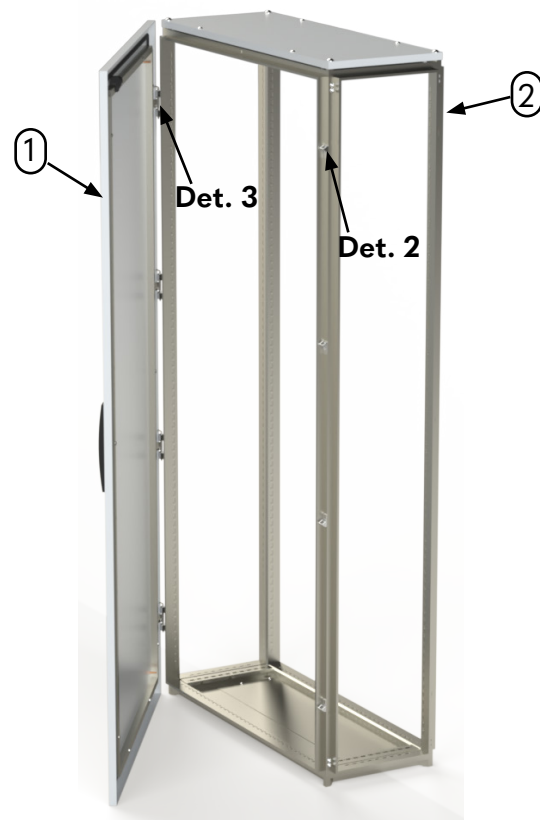
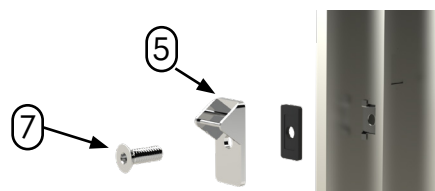
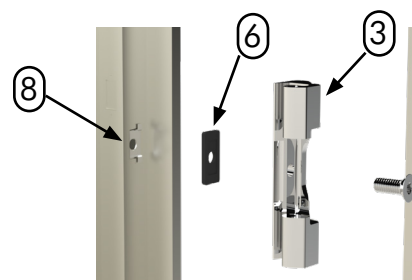


Figure 1



Detail 2



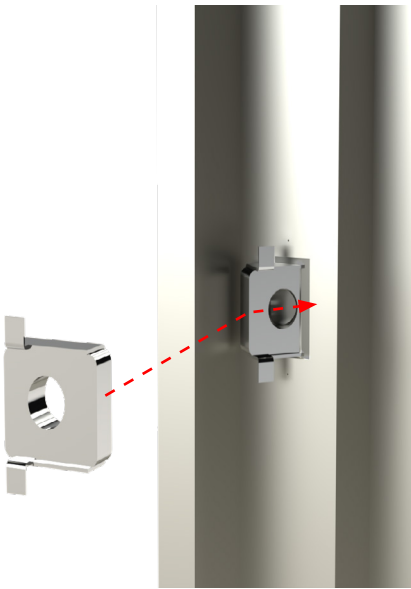
Detail 3



Your Enclosure Source®

ok-dbe-dte.pdf

## ADDITIONAL DETAILS



**Figure 4**

### **Installing Cage Nuts Detail:**

Insert the cage nut (Item 8) into frame. Slide flush with the frame.

### **Latch Orientation Detail:**

Top two latches will be face-up. Bottom two latches will be face-down.



**Figure 5**



**Figure 6**

### **Pin Installation Detail:**

Insert hinge pin (Item 4) through the door hinge and hinge assembly (Item 3), as shown in Figure 6. Ensure the pin is seated completely. Pins may require force to insert completely.

\*For enclosures with height greater than 1600, insert topmost hinge pin from the bottom.



*Your Enclosure Source®*

ok-dbe-dte.pdf