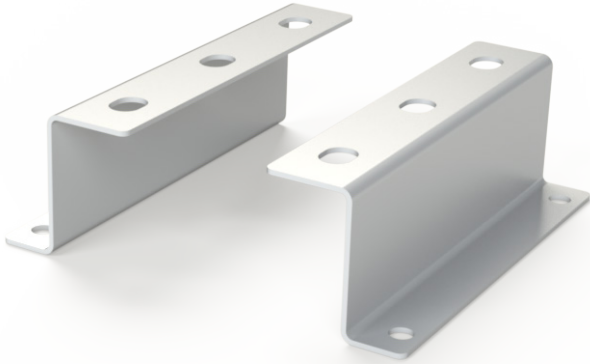


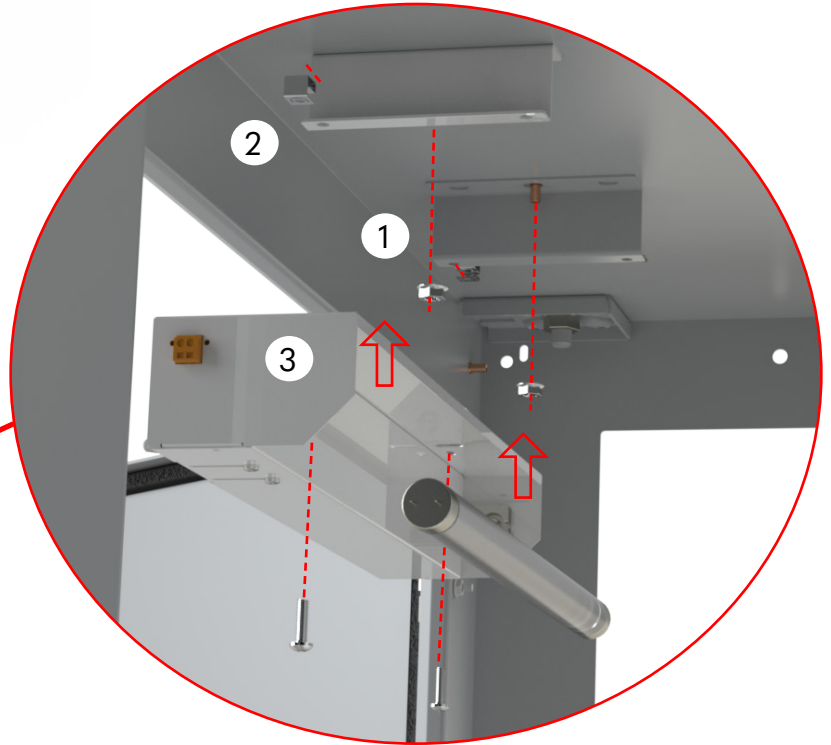
SCE-LFMTGK INSTALLATION GUIDE



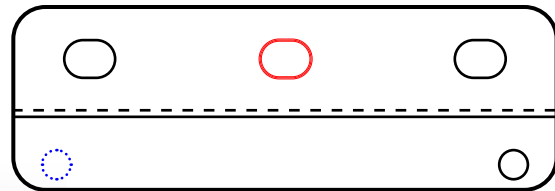
SCE-LFMTGK Z-Brackets

SCE-LFMTGK is a small kit used to install an SCE light onto the ceiling of an enclosure that has a 3.5" front flange. Using these Z-Brackets lowers and moves the light forward. Doing this allows the activating switch to be in the correct position without drilling unwanted holes into the enclosure.

Bolt Pack Hardware Separation	
SCE-LFMTGK	Light
10-32 cage nuts	1/4-20 nuts
	1/4-20 mounting screws



Depending on your enclosure and light, slight changes to the installation may need to happen to get the proper result.



1. Install Z-Brackets using 1/4-20 nuts onto studs. Typical location of this is using the middle obround. ○
2. Install 10-32 cage nut onto the round cutout ○ nearest the front flange.
3. Raise the light to the Z-Bracket and install the bolt into the cage nut, securing the light into the correct position using the 10/32 screws.