

HMI ENCLOSURE REINFORCEMENT INSTALLATION GUIDE

HMI Enclosure Reinforcement BOM		
ITEM	QTY	PART DESCRIPTION
1	8	0.25-20 Flange Nut (Part ID 100882)
2	8	0.25-20 X 0.63 Socket Cap Screw (Part ID 102532)
3	2	2.00 X 3.5 X 4.25 Reinforcement Bracket
4	1	21.69 X 4.75 X 0.63 Reinforcement Plate

HMI Enclosure Reinforcement Size Guide	
Part Number	Adjustable Range
SCE-HMIR16T20	16" - 20"
SCE-HMIR22T25	22" - 26"

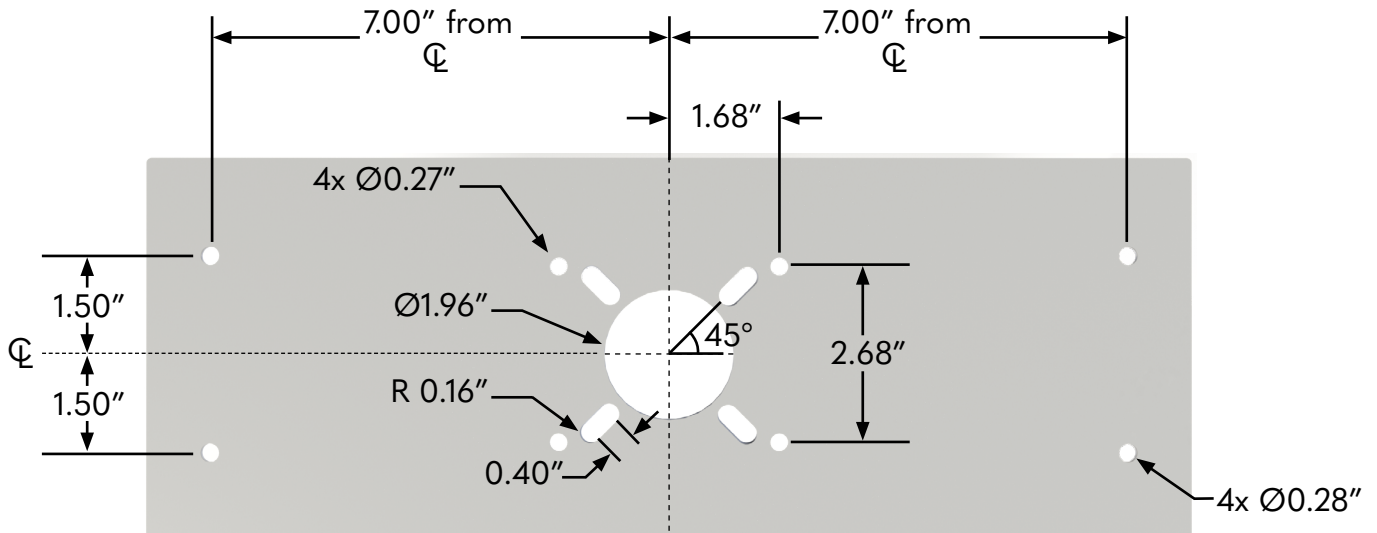
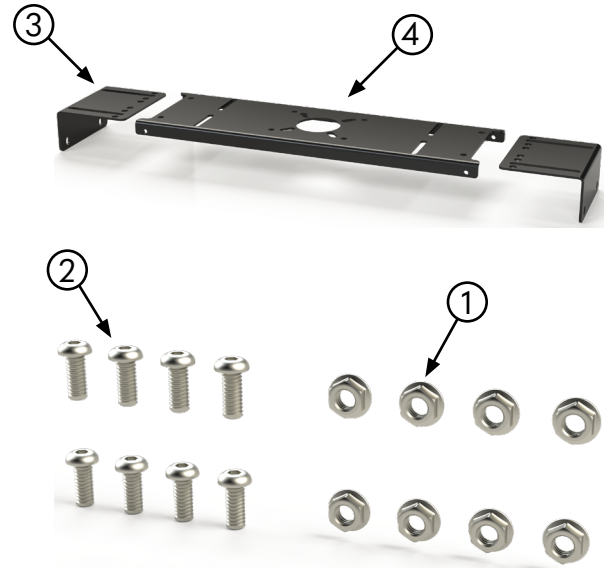


Figure 1: Enclosure top Cutout Locations and Sizes

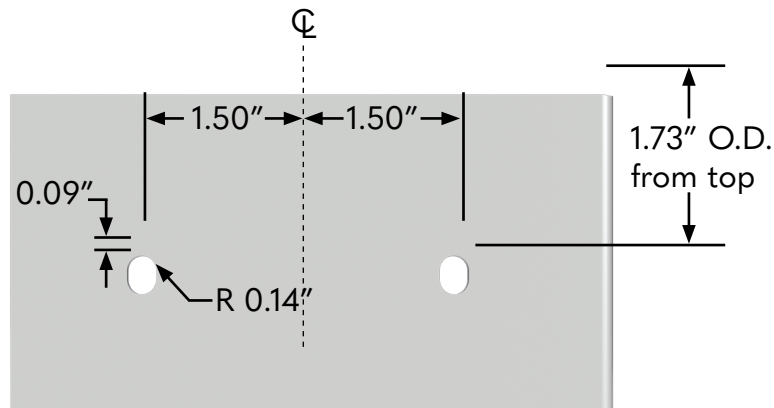


Figure 2: Side Cutout Locations and Sizes



Your Enclosure Source®
hmi-enclosure-reinforcement.pdf

HMI ENCLOSURE REINFORCEMENT INSTALLATION GUIDE

1. Position the Reinforcement Brackets and Reinforcement Plate together as shown in **Figure 3**.
2. Align the assembly with the inside top of the enclosure. Refer to **Figure 4** for the locations and insertion orientation of all 1/4-20 screws.
3. Insert four 1/4-20 screws through the top corner holes of the enclosure. Install a nut on each screw and tighten finger-tight to allow for bracket adjustment.
4. Adjust the Reinforcement Brackets until they are flush with the sides of the enclosure.
5. Install the remaining 1/4-20 screws through the side mounting holes. Install a nut on each screw and tighten finger-tight.
6. Verify that the cutouts in the enclosure is aligned with the cutouts in the Reinforcement Plate.
7. Tighten all 1/4-20 screws to the specified torque.

Torque Specification: 45.6 - 91.2 in-lbs per 1/4-20 screw.



Important: Verify alignment of the enclosure and Reinforcement Plate before applying final torque to the fasteners.

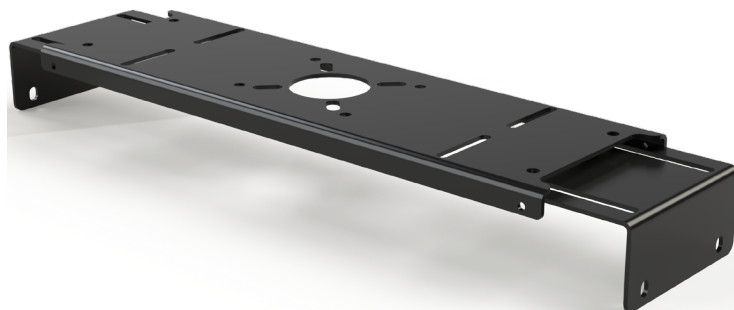


Figure 3: Position of Reinforcement Brackets and Plate

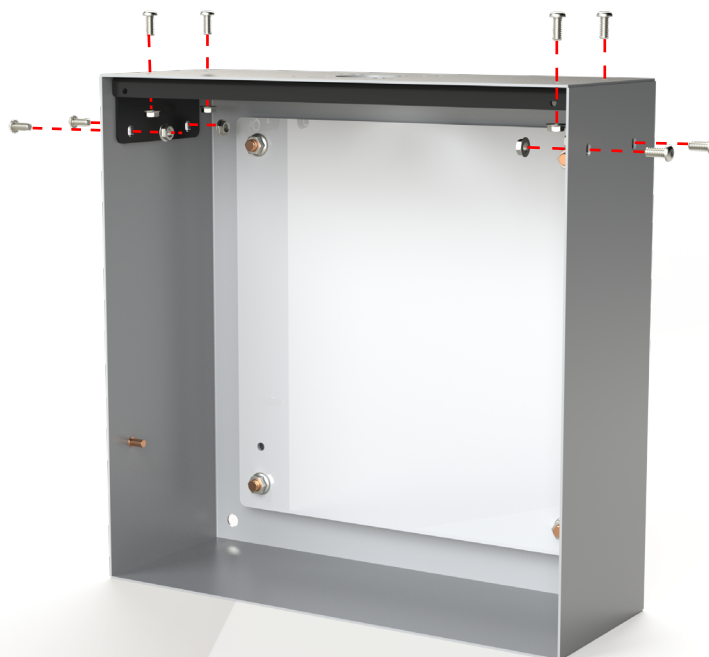


Figure 4: Location and Orientation of 1/4-20 Screws