

# FILTER REGULATOR KIT ASSEMBLY GUIDE

FRK BOM		
Item	Qty	Part Description
1	1	Filter/Regulator
2	1	0-180 PSI Pressure Gauge
3	1	Wire Connector 22mm w/LED
4	1	Lockout Tab
5	1	Pressure Adjustment Dial
6	1	Solenoid
7	1	Manual Shutoff Switch
8	1	Mounting Bracket
9	1	Drain Release
10	2	Washer
11	2	Partially Threaded Screw

## Filter Regulator Kit Installation

- Install the Solenoid Starter (Item 6):
  - Place the solenoid on top of the brass pipe.
  - Secure it by hand-tightening the solenoid cap onto the brass pipe's top threads.
- Connect the Wire Connector (Item 3):
  - Attach the 22mm wire connector to the male terminals of the solenoid.
  - **Polarity Note:** The two main prongs are non-polar; the single bottom prong is the ground (see Figure 2).
- Attach the Pressure Gauge (Item 2):
  - Screw the gauge into the front port of the filter/regulator (Item 1) until snug. See Figure 2.
  - **Important:** Do not use thread tape, sealant, etc. on gauge.

## Basic Operation Instructions

- Adjusting Air Pressure:
  - Ensure the lockout tab (Item 4) is pushed in.
  - Lift the pressure dial vertically until a click is heard.
  - Rotate the dial to set the desired pressure.
  - Press the dial down to lock in the setting.
- System Indicators:
  - A red LED inside the wire connector indicates when the system is energized.
  - Gray arrows on the housing (and in Figure 1) show the direction of airflow.

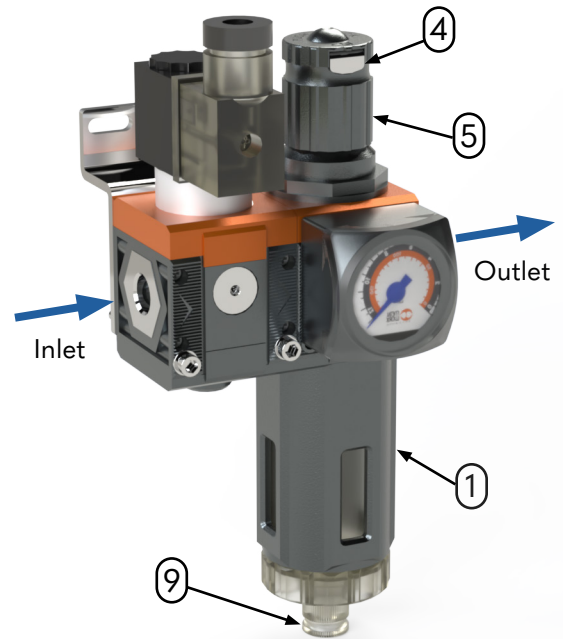


Figure 1

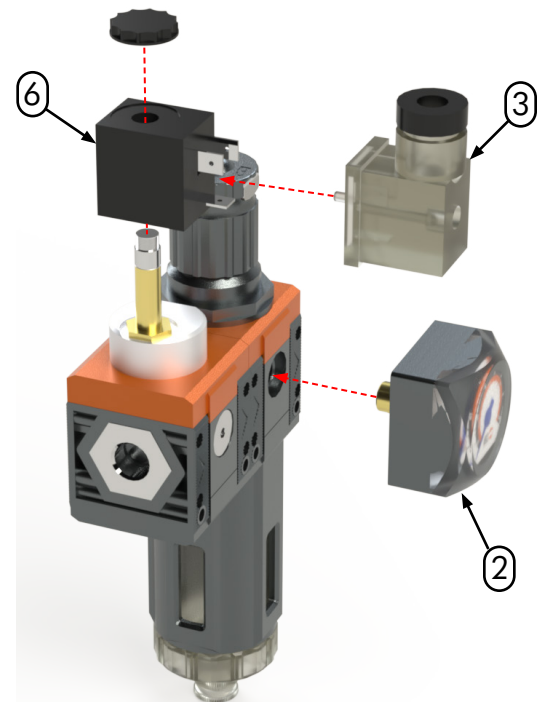


Figure 2



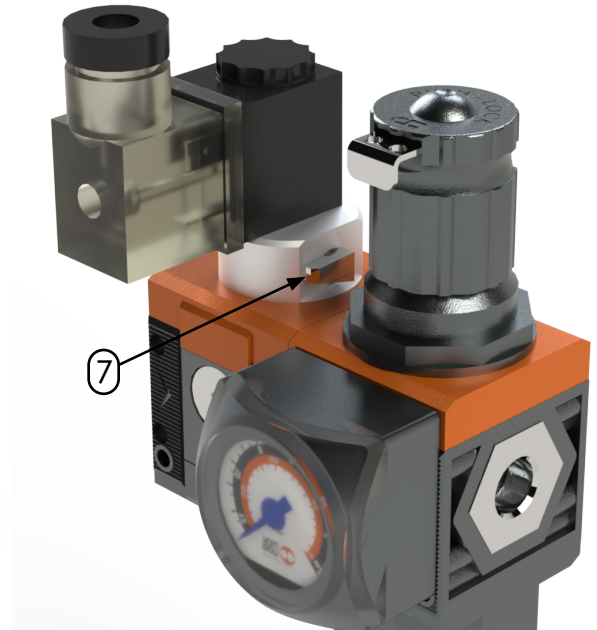
Your Enclosure Source®

filter-regulator.pdf

## Mounting Bracket Assembly

**Tools Required:** 3mm Hex Bit, Driver or Screwdriver

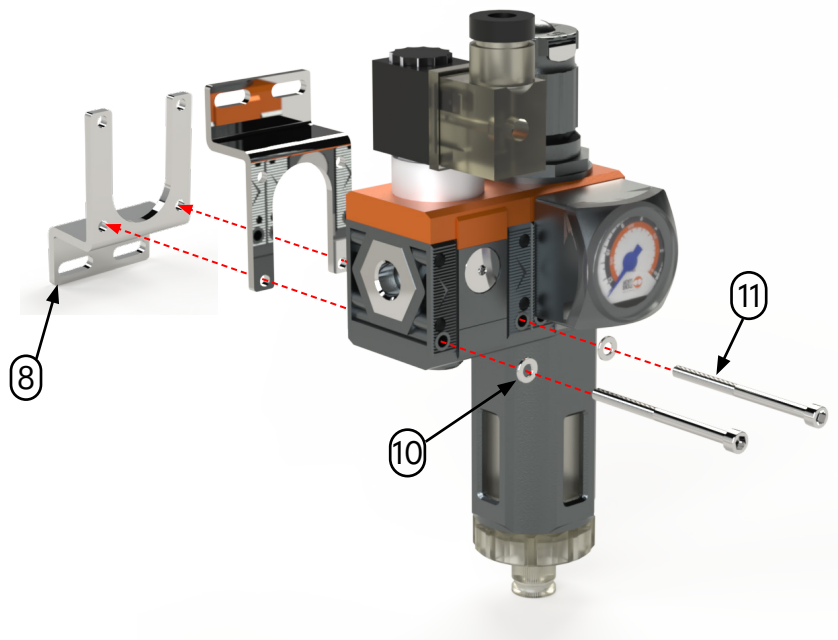
- Attach the Mounting Bracket (Item 8):
  - Position the bracket on the back side of the housing.
  - The bracket can be rotated 180° to orient the mounting cutouts either upward or downward.
- Secure the Bracket:
  - Place a washer (Item 9) between the housing and each partially threaded screw (Item 10).
  - Tighten each screw to a torque of 0.8 Nm.



**Figure 3**

## Manual Shutoff Switch/Lockout Tab

- Manual Shutoff Switch (Item 7):
  - System Off: Switch in the horizontal position (see Figure 3).
  - System On: Rotate the switch 90° clockwise to a vertical position.
- Lockout Tab (Item 4):
  - Pull the tab outward to access two lockout holes for securing the system's air pressure.



**Figure 4**



*Your Enclosure Source®*