

# Step by step guide:

## Condensate Heater Replacement For Universal Units

For single phase sizes 6800 to 13600 BTU

**Tools needed:**



Cutting Pliers



T20 Security Torx Shank Screwdriver



5/32" Drill Bit



Phillips Screwdriver



Drill

**Material included in kit:**



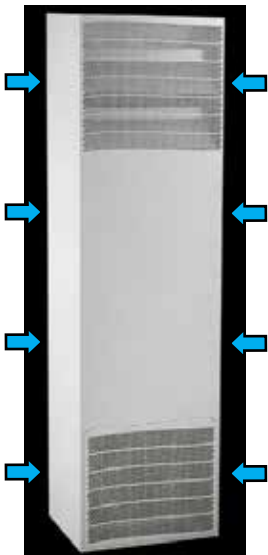
(1) Condensate evaporator (SP-5720-5741-BA-1)



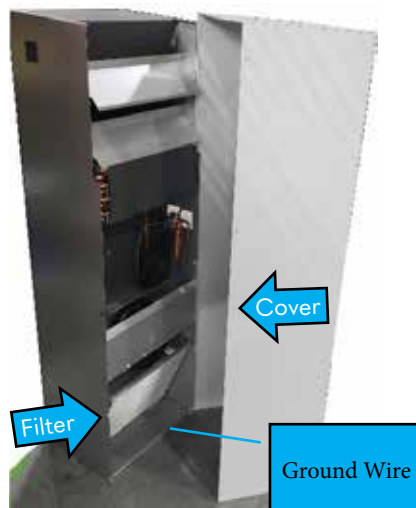
(10) 5/32" x 1/8" dome head blind rivets



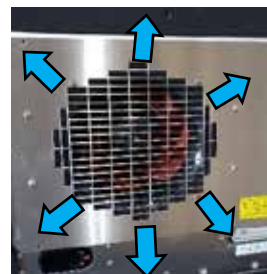
(6) Cable ties



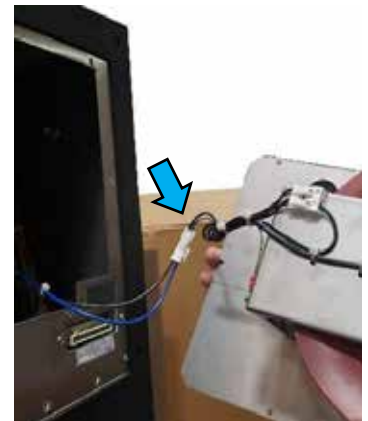
**Step 1:**  
With a T20 Torx Shank screwdriver remove the four screws on each side of the cover.



**Step 2:**  
Remove cover and filter. Disconnect ground wire when removing cover.



**Step 3:**  
Remove internal fan assembly by removing six Phillips screws.



**Step 3:**  
Disconnect power wires of internal fan assembly.



Step 5:

Locate power connector for the condensate evaporator. Cut the cable short for reuse in pulling new cable from new heater.



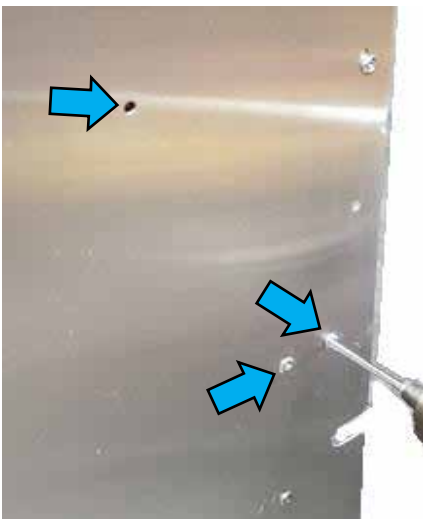
Step 6:

Remove ambient fan assembly by loosening the four mounting screws. Slide assembly up and remove assembly.



Step 7:

When removing ambient fan assembly, disconnect power connectors.



Step 8:

There are three rivets in each side of the unit securing the ambient fan inlet ring assembly.



Step 9:

To remove assembly remove all six rivets.

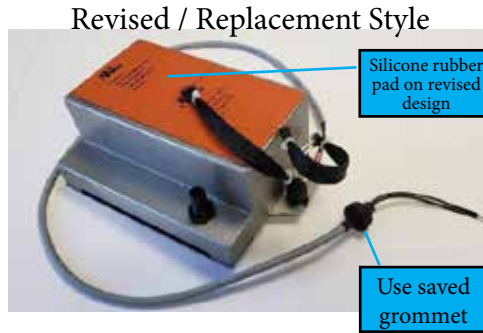
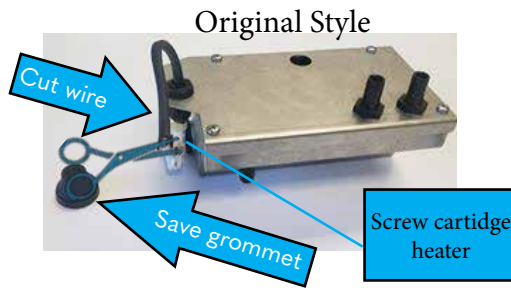


Step 10:

Remove the two rivets securing the heater on the back of the unit.



**Step 11:**  
The old condensate evaporator assembly can now be removed. Cut cable ties. Cut the cable.



**Step 12:**  
The cable will be used to pull the cable for the new assembly. Save the grommet, it will be used with the new assembly.



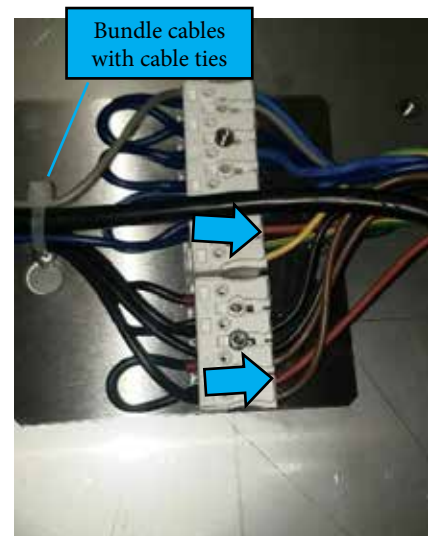
**Step 13:**  
After removing the old condensate evaporator assembly slide new unit in place. Connect the two condensate hoses.



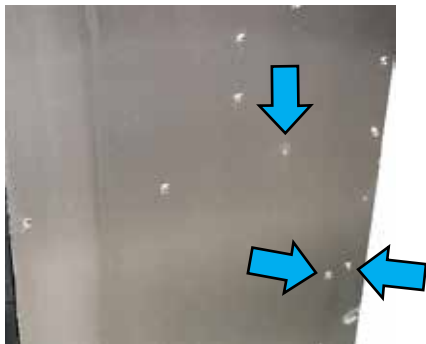
**Step 14:**  
Rivet the new condensate evaporator assembly in place.



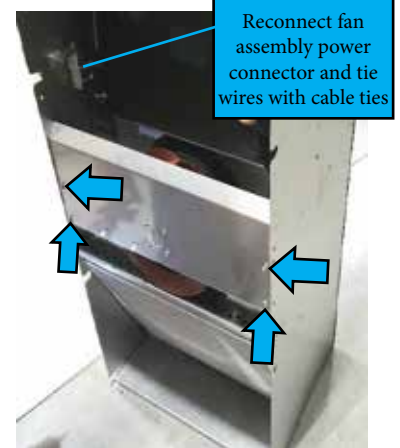
**Step 15:**  
Tie the wire left from old condensate evaporator in order to pull the cable of the new condensate evaporator. Use grommet removed from the old power connector and press it into place.



**Step 16:**  
Disconnect the wires of the old cut cable and connect the two wires from the new condensate evaporator to the connector. Use cable ties to group all the cables.



Step 17:  
Rivit the ambient fan inlet ring bracket back into place.



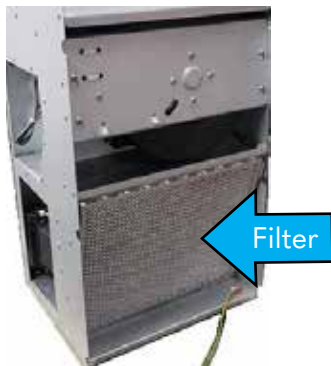
Step 18:  
Reassemble the ambient fan assembly. Position the bracket in place and reconnect power connector. Tie cables with cable ties.



Step 19:  
Connect internal fan assembly power connector,



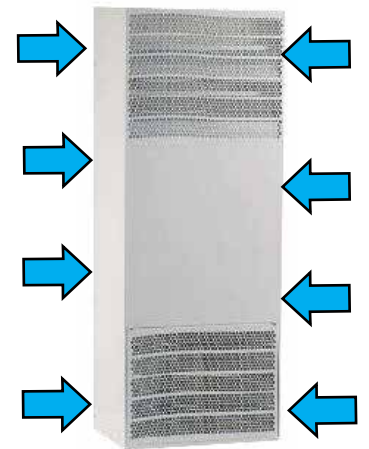
Step 20:  
Mount the internal fan assembly.



Step 21:  
Mount filter.



Step 22:  
Install cover back, connect ground wire before positioning cover.



Step 23:  
Screw cover in place on both sides.