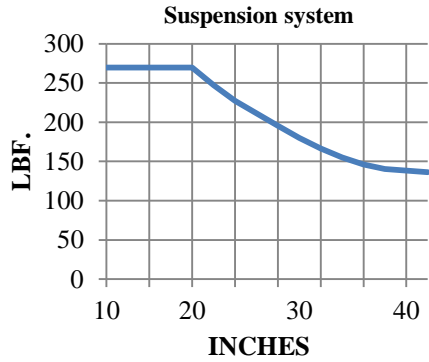


Stainless Steel Suspension System

LOAD DIAGRAM



— SCE-SAS

*Stainless steel round tube system with system components.

* Tube diameter 60mm

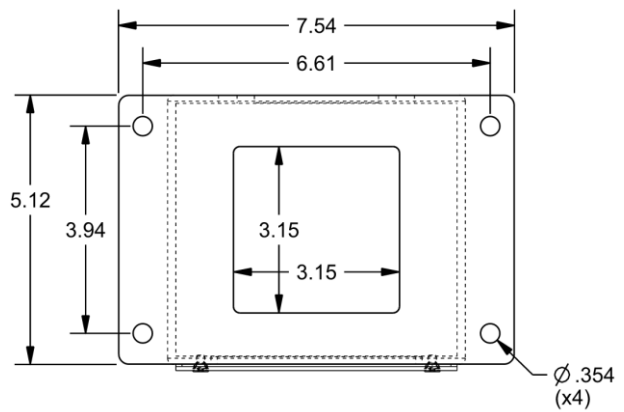
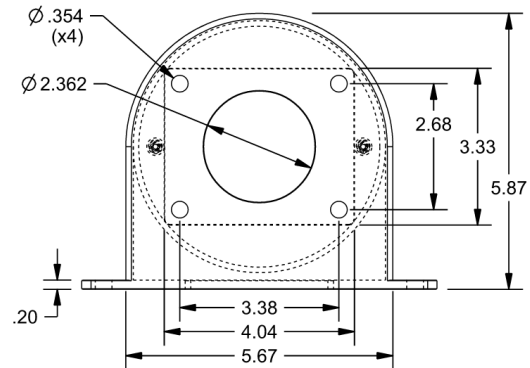
* Tube execution S-, J-, and I-shape.

*Components screwed to tube.

SCE-SASWMA

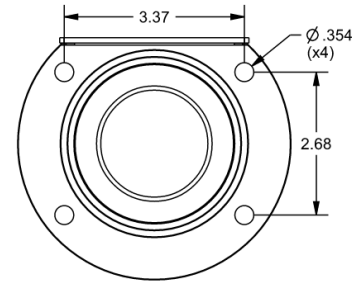
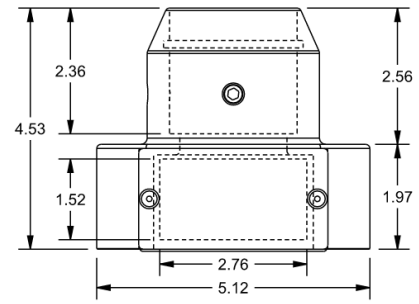
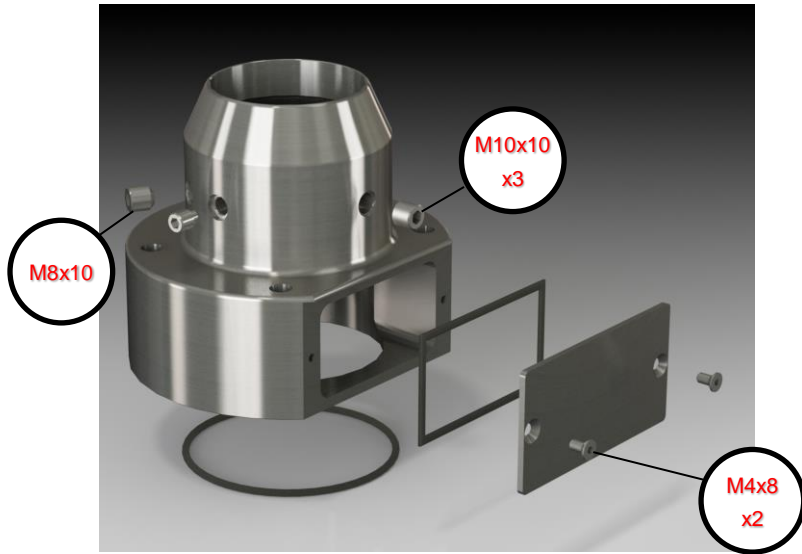


For adaption top-mounted joint or coupling



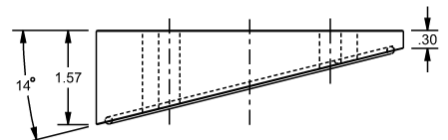
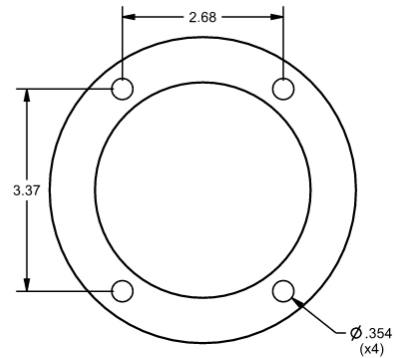
Stainless Steel Suspension System

SCE-SASFSCO



For external cable outlet on side.

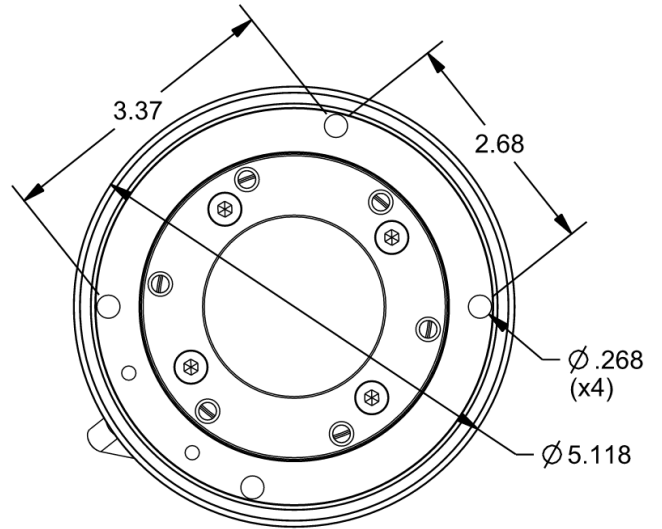
SCE-SAS14A



Angle of inclination 14°

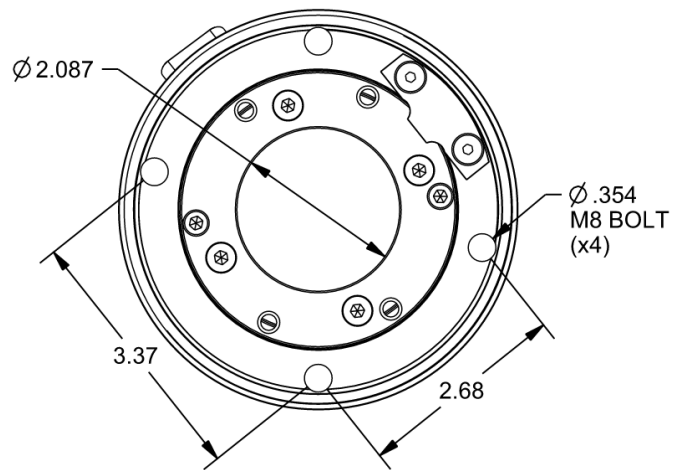
Stainless Steel Suspension System

SCE-SAS360C



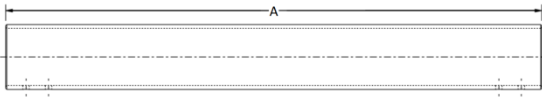
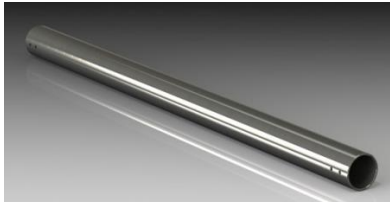

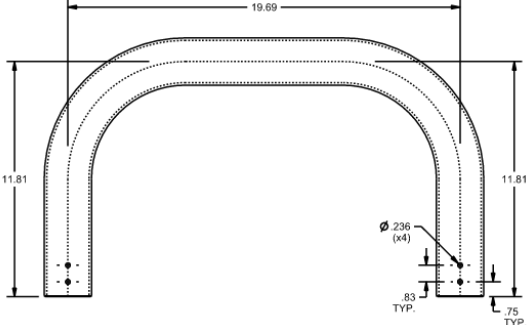

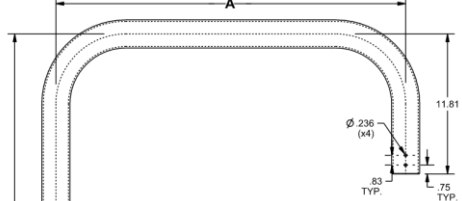




Pivot, can be locked at any point using clamping screw.
Swivel range: up to 350°, can be adjusted in 60° steps.

SCE-SAS310TM



Pivot, can be locked at any point using clamping screw.
Swivel range: up to 350°, can be adjusted in 60° steps

Stainless Steel Suspension System

PART NUMBER	"A" LENGTH		
SCE-SAS20I	19.69"		
SCE-SAS39I	39.37"		
SCE-SAS59I	59.06"		
SCE-SAS20J			
SCE-SAS30J	29.53"		
SCE-SAS39J	39.37"		
SCE-SAS20S	19.69"		
SCE-SAS39S	39.37"	