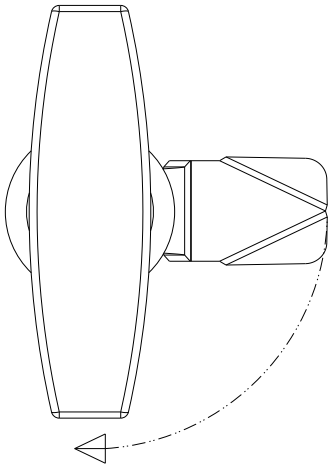
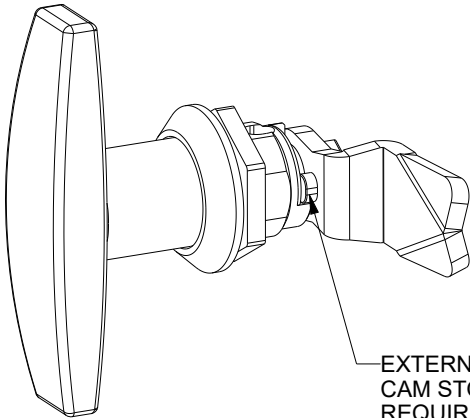


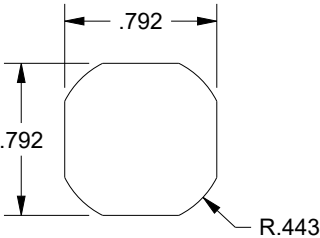
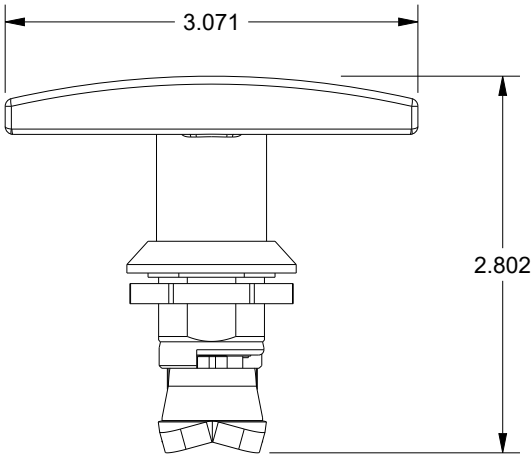
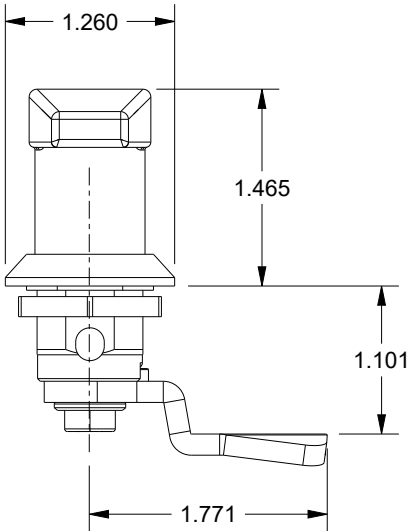
SCE-NLTH



90 ° ROTATION




EXTERNAL
CAM STOP
REQUIRED



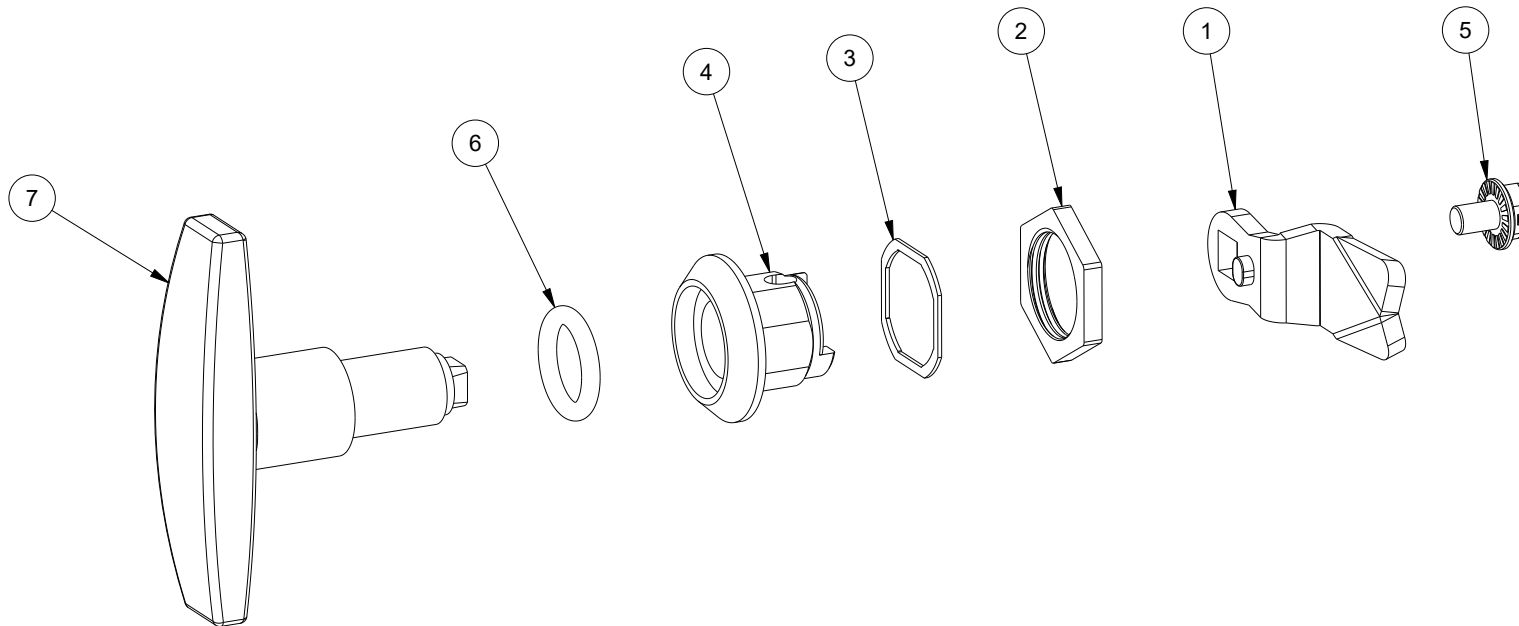
CUTOUT DETAIL

DESCRIPTION:
T-Handle - Non-Locking w/ 28mm Cam - Zinc Die Cast - Chrome Plated - PART ID 101422


DRAWN BY: Sherven		CUSTOMER: SAGINAW CONTROL & ENGINEERING	
DATE: 1/15/24		PART NUMBER: SCE-NLTH	REV: --
ZINC DIE CAST CHROME PLATED		CUSTOMER I.D.: SCE2	 Your Enclosure Source®
		SHEET: 1 OF 2	

BILL OF MATERIAL

ITEM	QTY	PART DESCRIPTION	PART I.D.
1	1	Cam - Single Point - 28mm - Steel, - Zinc Clear	NA
2	1	Earth Nut - M22 X 1.5 - Steel - Zinc Plated	NA
3	1	Flat Seal - NBR - Black	NA
4	1	Housing - Zinc Die Cast - Chrome Plated	NA
5	1	Locking Screw - M6 x 8 mm. - Steel - Zinc Plated	NA
6	1	O-Ring - 15 mm. I.D. x 3.5 mm. Thick - Rubber - Black	NA
7	1	T-Handle - Zinc Die Cast - Chrome Plated	NA



DESCRIPTION:
T-Handle - Non-Locking w/ 28mm Cam - Zinc Die Cast - Chrome Plated - PART ID 101422

DRAWN BY: Sherven	CUSTOMER: SAGINAW CONTROL & ENGINEERING		
DATE: 1/15/24	PART NUMBER: SCE-NLTH		REV: --
ZINC DIE CAST CHROME PLATED	CUSTOMER I.D.: SCE2	 Your Enclosure Source®	
	SHEET: 2 OF 2		