


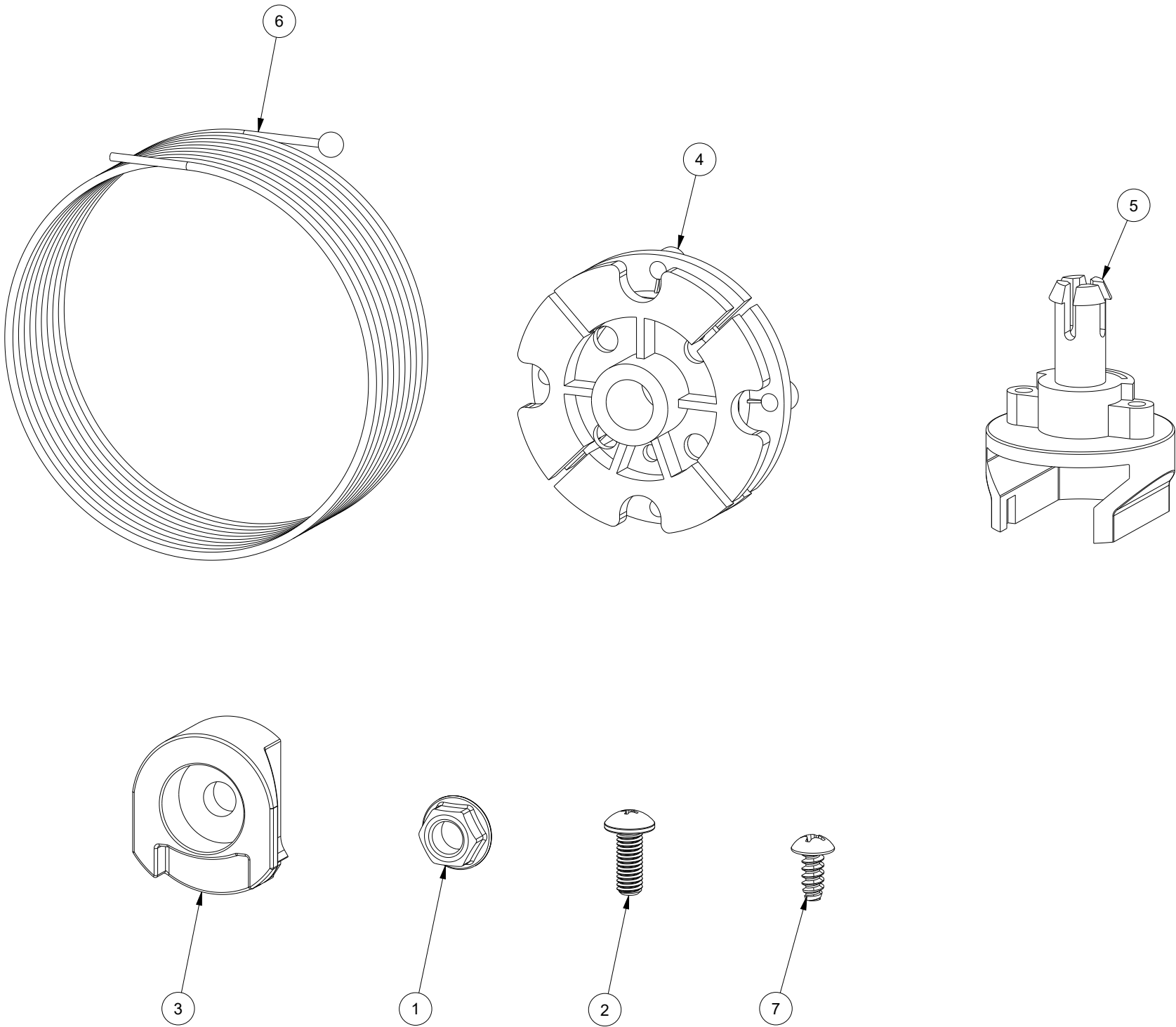
SEE SHEET 2 FOR
BILL OF MATERIAL


BILL OF MATERIAL			
ITEM	QTY	PART DESCRIPTION	PART I.D.
1	4	Flange Nut - Serrated - 0.25-20 - Steel - Zinc Plated Clear	100882
2	4	Flange Nut - Serrated - 10-32 - Steel - Zinc Plated Clear	100897
3	2	Shoulder Screw - Socket Head - 10-32 X 0.56 - Steel - Zinc Plated Clear	102407
4	1	Socket Cap Screw - Button Head - 0.25-20 X 0.63 - Stainless Steel	102532
5	1	Sealing Washer - 10-32 - 0.180 X 0.496 - Stainless Steel w/ EPDM Gasket	114509
6	1	Main Door Mechanical Interlock, Right Side Push, No Grab 3.50" CC	130218
7	1	Slave Door Mechanical Interlock, Left Side Grab, 3.50" CC	130222
8	2	Mounting Bracket - NextGen Interlock - 5.50 X 2.22 X 1.50 - Steel - Zinc Plated	130512
9	1	Mechanical Interlock Cable Operated - Overhead - Sigle Door Cable - Two Pullies	130520
10	1	Warning Label - Operating instuction - Full Color - vinyl with matte finish	132901
11	1	Single point Cam - NEXD Cam - 0.50 X 1.68 X 0.50 - 0.075 Steel - Zinc Plated Cle	132908
12	1	Extension Spring - w/ Hook Ends - 0.055 in. - 0.375 in. X 1.25 in. - Steel	132909
13	1	Mini Quarter Turn Slotted - No Cam - O-Ring or Wave Washer Zinc Die Cast - Black	132910

DESCRIPTION: Interlock Kit 30 to 600 Amp (NEXD & NEXR)

DRAWN BY: Sherven	CUSTOMER: SAGINAW CONTROL & ENGINEERING		
DATE: 7/25/24	PART NUMBER: SCE-NEXDMLK		REV: --
MATERIAL AS SPECIFIED	CUSTOMER I.D.: SCE2	 Your Enclosure Source®	
	SHEET: 1 OF 2		

BILL OF MATERIAL			
ITEM	QTY	PART DESCRIPTION	PART I.D.
1	2	Flange Nut - Serrated - 0.25-20 - Steel - Zinc Plated Clear	100882
2	2	Machine Screw - Pan Head Phillips - 10-32 X 0.50 - Steel - Zinc Plated Clear	102470
3	2	Door Rod Guide Base - 0.58 X 1.15 X Polyamide 66 - 30% Glass Reinforced - Black	128143
4	2	Mechanical Interlock - Cable Pulley - 2.063 X 0.75 X PA 6 30% Glass Filled	130213
5	2	Mechanical Interlock - Cable Pulley Base - 1.40 X 1.828 X PA 6 30% Glass Filled	130214
6	1	Cable assembly 3/64 7X7 Galvanized aircraft cable 1/16 OD 3/16 ball end - 132in.	130528
7	2	Blunt Screw - Round Head Phillips - 8 X 0.38 - Steel - Zinc Plated Clear	130590



DRAWN BY: Sherven	CUSTOMER: SAGINAW CONTROL & ENGINEERING		
DATE: 7/25/24	PART NUMBER: SCE-NEXDMLK		REV: --
MATERIAL AS SPECIFIED	CUSTOMER I.D.: SCE2	<div> Your Enclosure Source®</div>	
	SHEET: 2 OF 2		