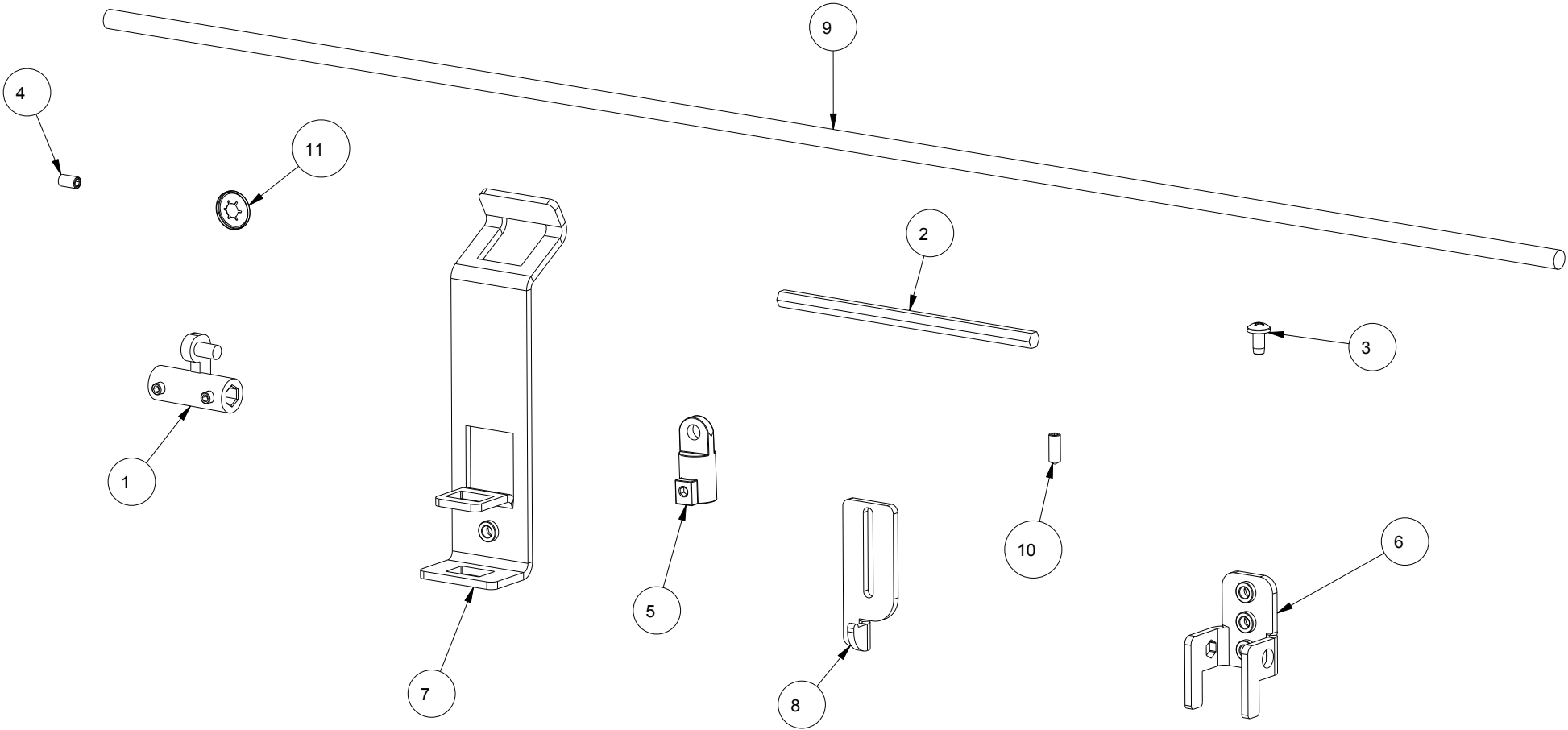



BILL OF MATERIAL			
ITEM	QTY	PART DESCRIPTION	PART I.D.
1	2	Rod Adapter, 0.31 Hex Rod W/Set Screw, Steel, Zinc	101384
2	1	Hex Rod, 1/4 x 1/4 x 1/4, 6061-T6, Aluminum	101819
3	2	Screw, Round Head Phillips, 10-32 X 3/8", Steel, Zinc Clear	102479
4	1	Screw, Set, Socket Head, Cone Point, 10-32 X 3/8", Steel, Black	102482
5	1	Adapter, 0.312 Rnd Rod, Zinc Die Cast, with Screw	102643
6	1	Overlapping Door Interlock Pivot Arm	102677
7	1	OL Door Adj. Catch, Large Rods, 4.85 x 1.50 x 1.10, Steel, Zinc	102678
8	1	Overlapping Door Adjustable Hook Arm 2.43 X 1.00 X 0.62 Steel, Zinc Clear	102679
9	1	Rod, Interlock, Round Bar, 0.312 dia., 6061-T6511, Aluminum	104257
10	2	Set Screw, Socket Head Cone Point, 10-32 x 1/2in, Steel	105975
11	1	Adapter, Push Nut, 0.38" Diameter, Steel, Zinc Plated Clear	118570



BY	REV.	ECR	DESCRIPTION OF CHANGES	DATE

DRAWN BY: PURTILL		CUSTOMER: SAGINAW CONTROL & ENGINEERING	
DATE: 05-13-15		PART NUMBER: SCE-MDMI2	REV: --
MATERIAL UNLESS SPECIFIED ALUMINUM, ZINC CAST AND STEEL, ZINC PLATED CLEAR		CUSTOMER I.D.: SCE1	 Your Enclosure Source®
		SHEET: 1 OF 1	