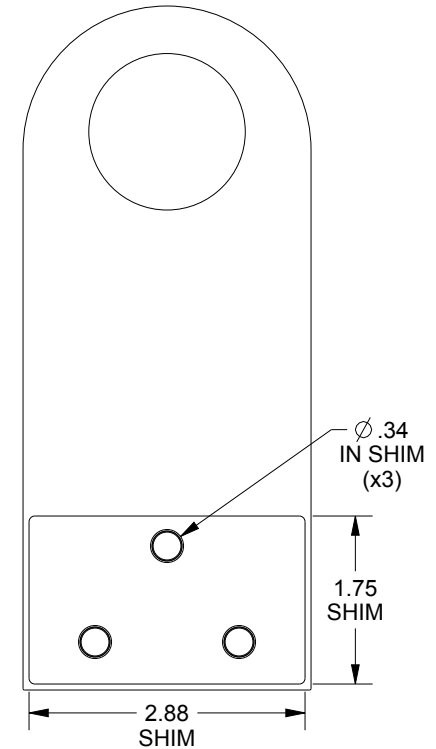
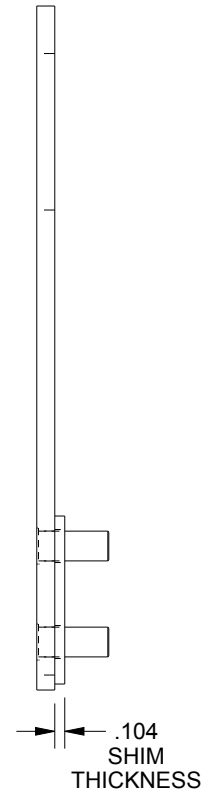


A schematic diagram of a three-layer printed circuit board (PCB). It consists of three horizontal layers. The top layer has three rectangular vias. The middle layer has three corresponding rectangular pads. The bottom layer has three corresponding rectangular pads. The vias are connected to the middle layer pads, and the middle layer pads are connected to the bottom layer pads.



NOTE:
0.104" SHIM IS LOOSE AND
IS ASSEMBLED BEHIND LUG

BILL OF MATERIAL			
ITEM	QTY	PART DESCRIPTION	PART I.D
1	3	Stud, Flush Head, 5/16-18 X 3/4", Steel, Zinc Clear, FH-0518-12ZI	100070
2	1	Bolt Pack - 0.31-18 Nut W/ Sealing Washer (6 Pck) - Zinc Plated	118457
3	1	Enclosure Lifting Lug	NA
4	1	Shim	NA