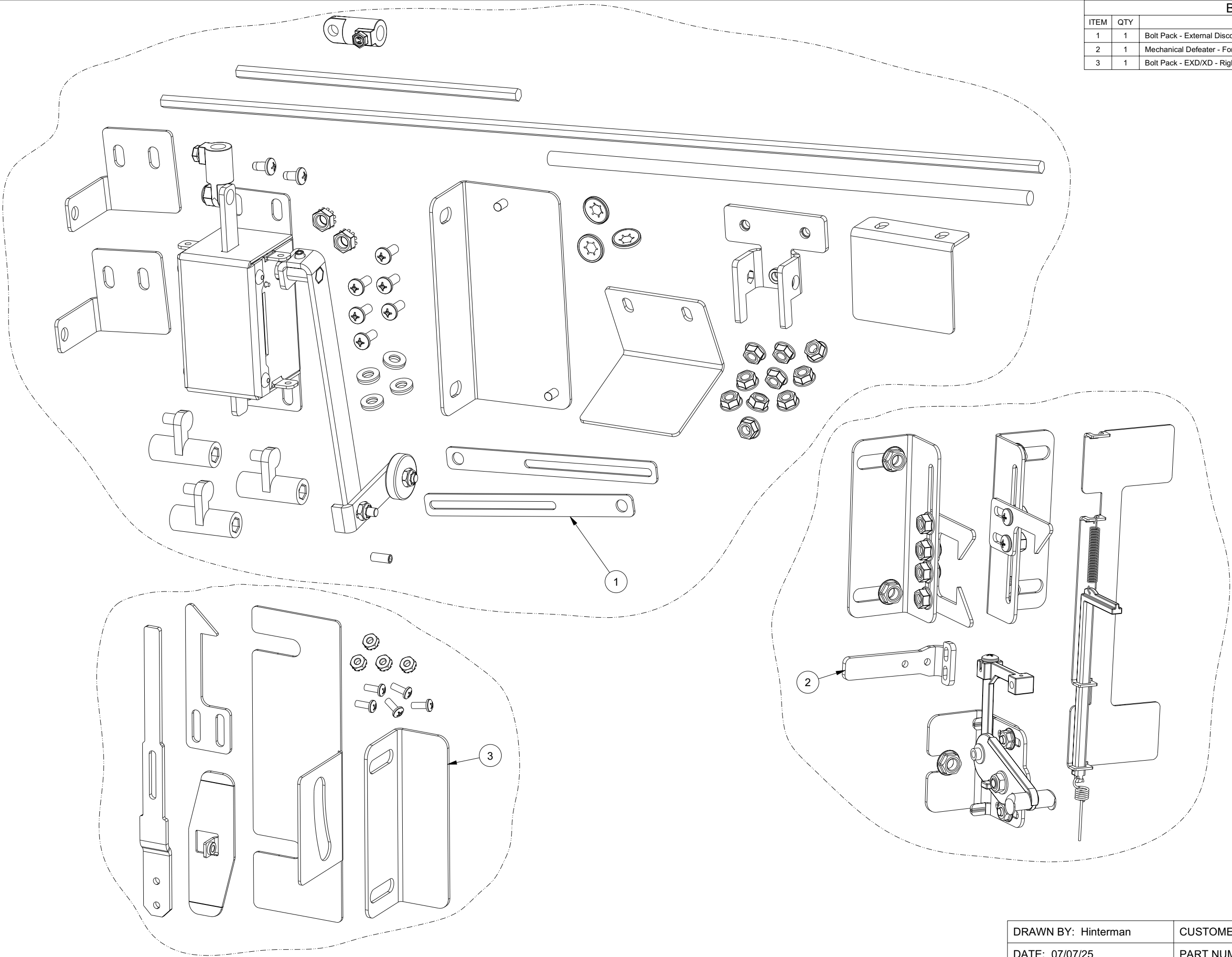



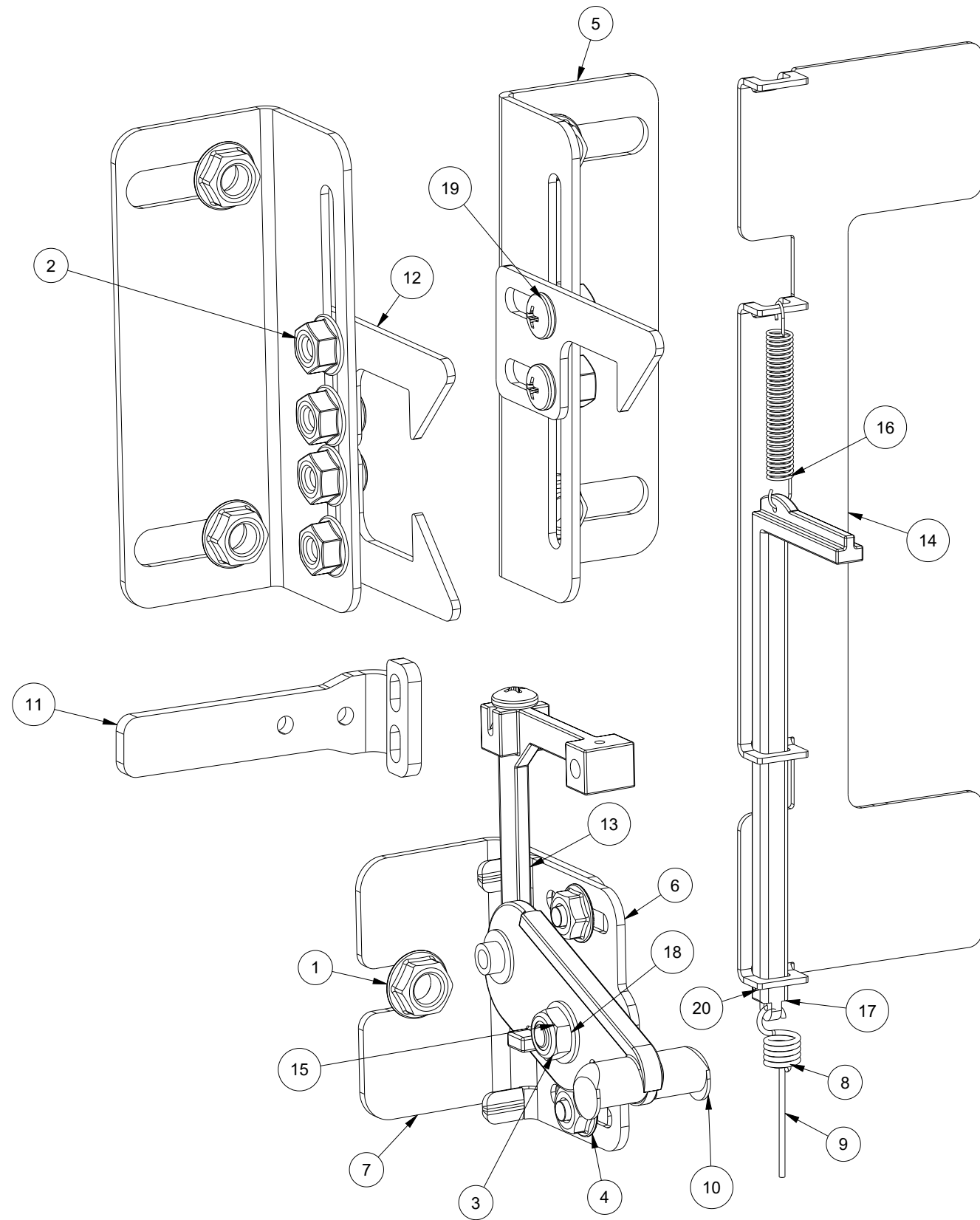
BILL OF MATERIAL

ITEM	QTY	PART DESCRIPTION	PART I.D.
1	1	Bolt Pack - External Disconnect (EXD) - Uninstalled	126037
2	1	Mechanical Defeater - For EXD w/Disc On Left - 9.00 X 4.00 - Steel - Zinc Plated	128030
3	1	Bolt Pack - EXD/XD - Right Side Enclosure Mount w/ Disconnect on Left Flange	128266




SCE-EXDLK
Interlock kit for EXD enclosure with the disconnect on the left
and mounted to the right side of a main enclosure

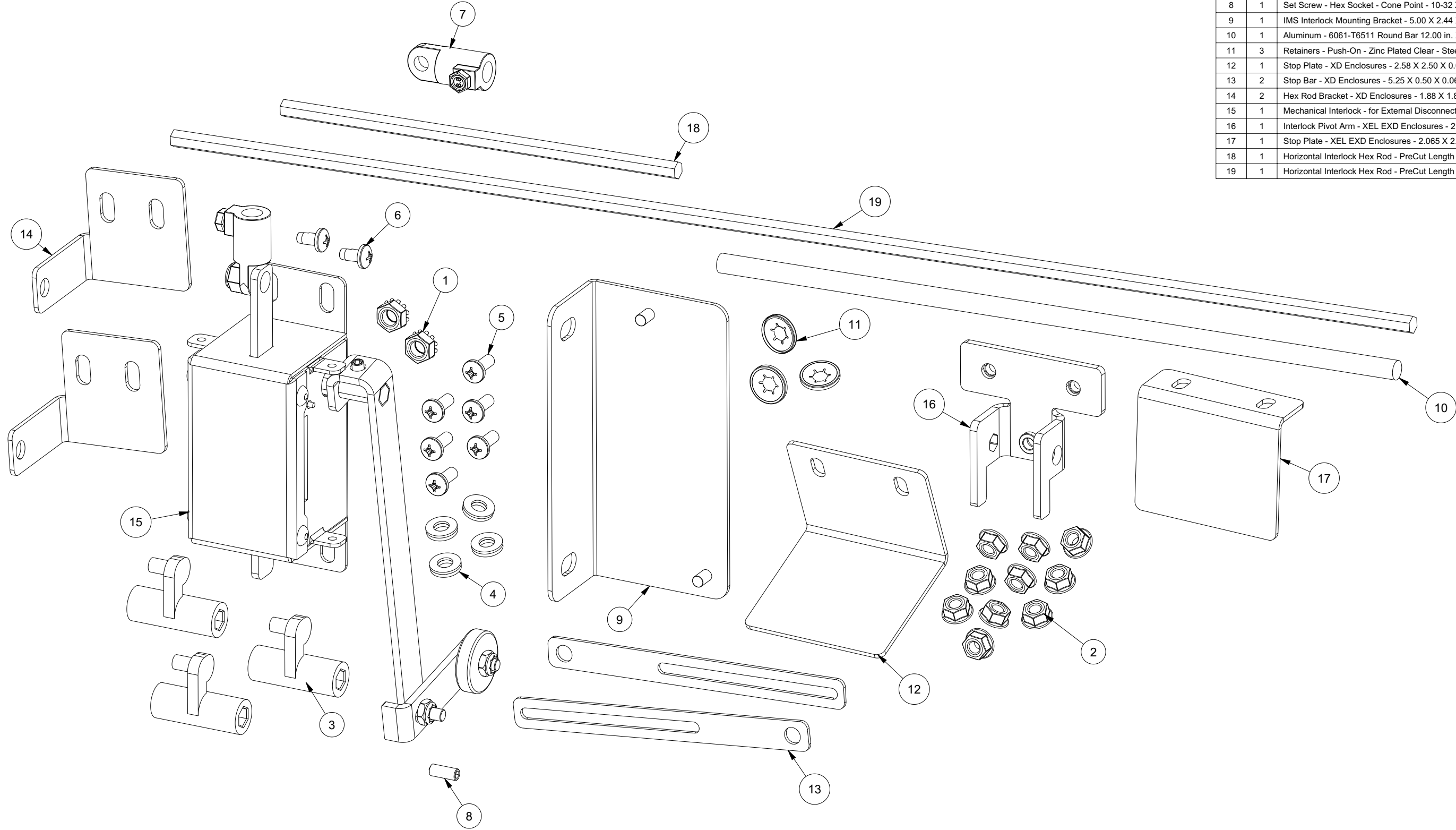
					DRAWN BY: Hinterman		CUSTOMER: SAGINAW CONTROL & ENGINEERING		
					DATE: 07/07/25		PART NUMBER: SCE-EXDLK		REV: --
					MATERIAL AS SPECIFIED PER INDIVIDUAL BOLT PACK SPECIFICATIONS		CUSTOMER I.D.: SCE2	<div> Your Enclosure Source®</div>	
SHEET: 1 OF 4									
BY	REV.	ECR	DESCRIPTION OF CHANGES	DATE					



BILL OF MATERIAL #128030			
ITEM	QTY	PART DESCRIPTION	PART I.D.
1	5	Nut, Serrated Flange - 1/4-20 Steel - Zinc Clear	100882
2	6	Flange Nut - Serrated - 10-32 - Steel - Zinc Plated Clear	100897
3	1	Flat Washer - 0.51 O.D. x 0.22 I.D. - Zinc Aluminum Coated	100989
4	2	Nut, Serrated Flange - 8-32 - Zinc Clear	113152
5	2	Mechanical Defeater Adjustable Hook Mounting Bracket	NA
6	1	Mechanical Defeater Adjustable Mounting Bracket	NA
7	1	Mechanical Defeater Base Mounting Bracket	NA
8	1	Mechanical Defeater Bottom Extension Spring	NA
9	1	Mechanical Defeater Cable	NA
10	1	Mechanical Defeater Cam Lever	NA
11	1	Mechanical Defeater Disconnect Defeater Bracket	NA
12	3	Mechanical Defeater Disconnect Hook	NA
13	1	Mechanical Defeater Pivot Arm	NA
14	1	Mechanical Defeater Rod Guide	NA
15	1	Mechanical Defeater Shouldered Standoff	NA
16	1	Mechanical Defeater Top Extension Spring	NA
17	1	Mechanical Defeater Top Rod	NA
18	1	Nut - Lock - Thin - Nylon Insert - 10-32 - Steel - Zinc Clear	
19	8	Screw - Pan Head Phillips - 10-32 X 5/16" - Steel - Zinc Clear	
20	1	Slotted Spring Pin - 0.06" Dia - 0.31" Long - Steel	


DRAWN BY: Hinterman		CUSTOMER: SAGINAW CONTROL & ENGINEERING	
DATE: 07/07/25		PART NUMBER: SCE-EXDLK	REV: --
MATERIAL AS SPECIFIED PER INDIVIDUAL BOLT PACK SPECIFICATIONS		CUSTOMER I.D.: SCE2	 Your Enclosure Source®
		SHEET: 2 OF 4	

BY	REV.	ECR	DESCRIPTION OF CHANGES	DATE

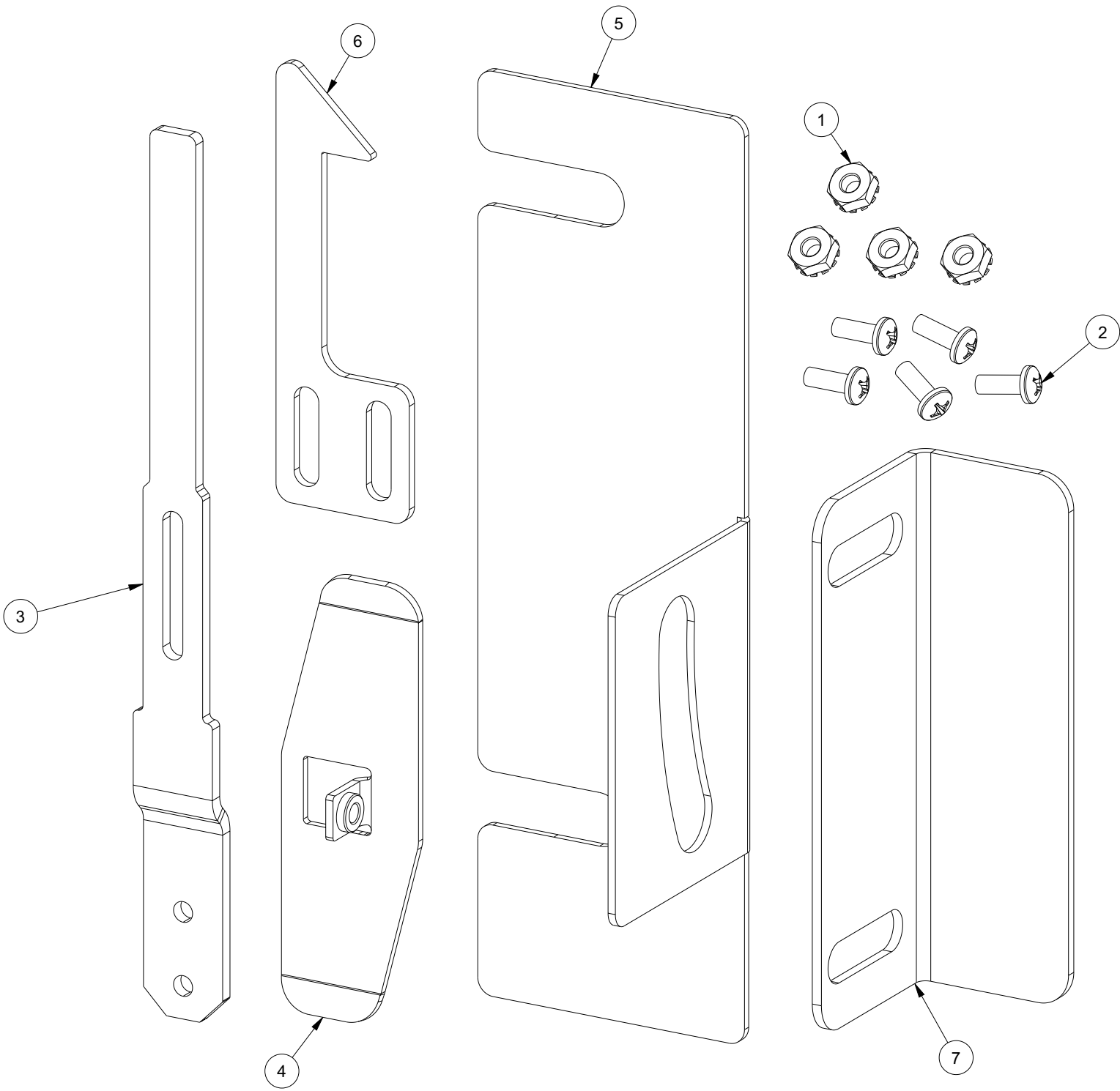


BILL OF MATERIAL #126037			
ITEM	QTY	PART DESCRIPTION	PART I.D.
1	2	Keps Nut - 0.25-20 - Steel - Zinc Plated Clear	100877
2	10	Flange Nut - Serrated - 10-32 - Steel - Zinc Plated Clear	100897
3	3	Hex Rod Adapter w/2 Set Screws Installed - 1.49 Long - 0.31 - Zinc Die Cast	101384
4	4	Sealing Washer - 10-32 - 0.26 X 0.496 - Galvanized Steel w/ EPDM Gasket	102152
5	6	Machine Screw - Pan Head Phillips - 10-32 X 0.50 in. - Steel - Zinc Plated Clear	102470
6	2	Thread Cutting Machine Screw - Pan Head Phillips - 10-32 X 0.38 - Steel - Zinc	102479
7	1	0.312 Round Rod Adapter w/ Set Screw - Zinc Die Cast - Zinc Plated Clear	102643
8	1	Set Screw - Hex Socket - Cone Point - 10-32 X 0.50 - Steel - Black	105975
9	1	IMS Interlock Mounting Bracket - 5.00 X 2.44 X 1.50 X 0.75 - Galvannealed	110246
10	1	Aluminum - 6061-T6511 Round Bar 12.00 in. X .312 dia.	118250
11	3	Retainers - Push-On - Zinc Plated Clear - Steel - 0.22 ID X 0.53 OD	118570
12	1	Stop Plate - XD Enclosures - 2.58 X 2.50 X 0.075 - Galvannealed	125971
13	2	Stop Bar - XD Enclosures - 5.25 X 0.50 X 0.060 - Galvannealed	125975
14	2	Hex Rod Bracket - XD Enclosures - 1.88 X 1.88 X 1.75 X 0.075 - Galvannealed	126000
15	1	Mechanical Interlock - for External Disconnect Enclosures - SCE-EXDCVK	126543
16	1	Interlock Pivot Arm - XEL EXD Enclosures - 2.50 X 2.36 X 0.125 - Galvannealed	126961
17	1	Stop Plate - XEL EXD Enclosures - 2.065 X 2.50 X 0.075 - Galvannealed	126962
18	1	Horizontal Interlock Hex Rod - PreCut Length - 0.25 X 7.00 in. - Aluminum	128634
19	1	Horizontal Interlock Hex Rod - PreCut Length - 0.25 X 22.00 X Aluminum	128636


DRAWN BY: Hinterman		CUSTOMER: SAGINAW CONTROL & ENGINEERING	
DATE: 07/07/25		PART NUMBER: SCE-EXDLK	REV: --

MATERIAL AS SPECIFIED PER INDIVIDUAL BOLT PACK SPECIFICATIONS	CUSTOMER I.D.: SCE2	 Your Enclosure Source®
	SHEET: 3 OF 4	

BY	REV.	ECR	DESCRIPTION OF CHANGES	DATE



BILL OF MATERIAL #128266			
ITEM	QTY	PART DESCRIPTION	PART I.D.
1	4	Nut - Keps - 6-32 - Steel - Zinc Clear	100926
2	5	Screw - Round Head Phillips - 6-32 x 0.375 - Steel - Zinc	102501
3	1	Extended Defeater - XD / EXD Enclosures - 6.75 X 0.65 X 0.125 - Stainless Steel	128267
4	1	Defeater Retention Bracket - XD / EXD Enclosures	128268
5	1	Defeater Guide Bracket - XD / EXD Enclosures - Enclosure Mounted on Right	128269
6	1	Defeater Hook EXD - Extended Length - 3.325 X 1.094 X 0.075 - Galvannealed	129050
7	1	Guide Bracket - Enclosure mounted on Left or Right - XD / EXD Enclosure	131861

DRAWN BY: Hinterman		CUSTOMER: SAGINAW CONTROL & ENGINEERING	
DATE: 07/07/25		PART NUMBER: SCE-EXDLK	REV: --
MATERIAL AS SPECIFIED PER INDIVIDUAL BOLT PACK SPECIFICATIONS		CUSTOMER I.D.: SCE2	<div> Your Enclosure Source®</div>
		SHEET: 4 OF 4	

BY	REV.	ECR	DESCRIPTION OF CHANGES	DATE