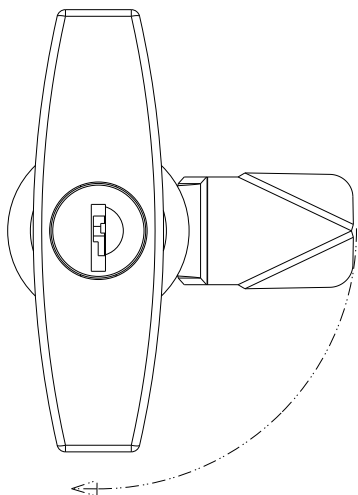
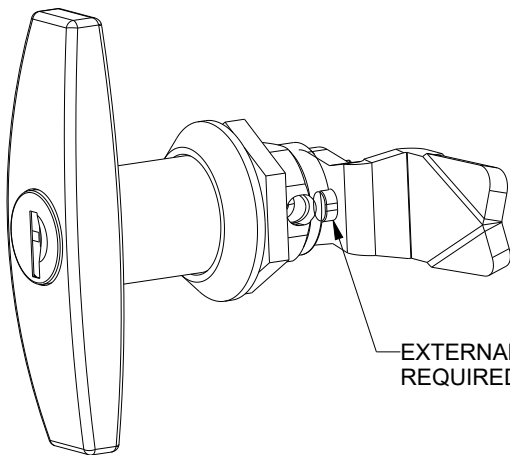


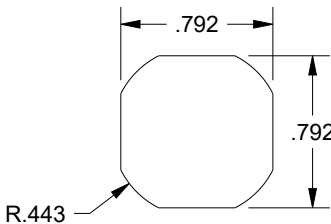
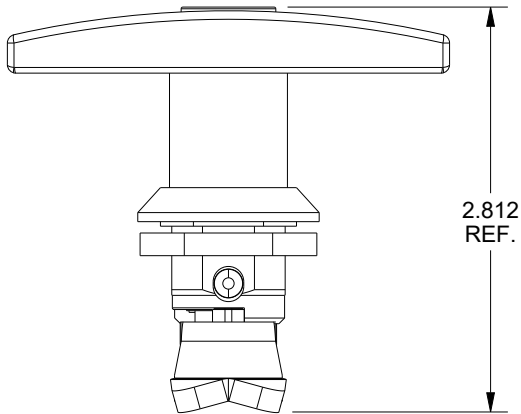
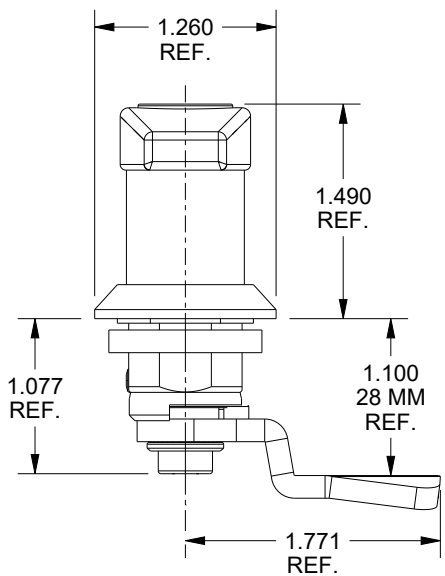
SCE-ELKLT



90° ROTATION




EXTERNAL CAM STOP
REQUIRED

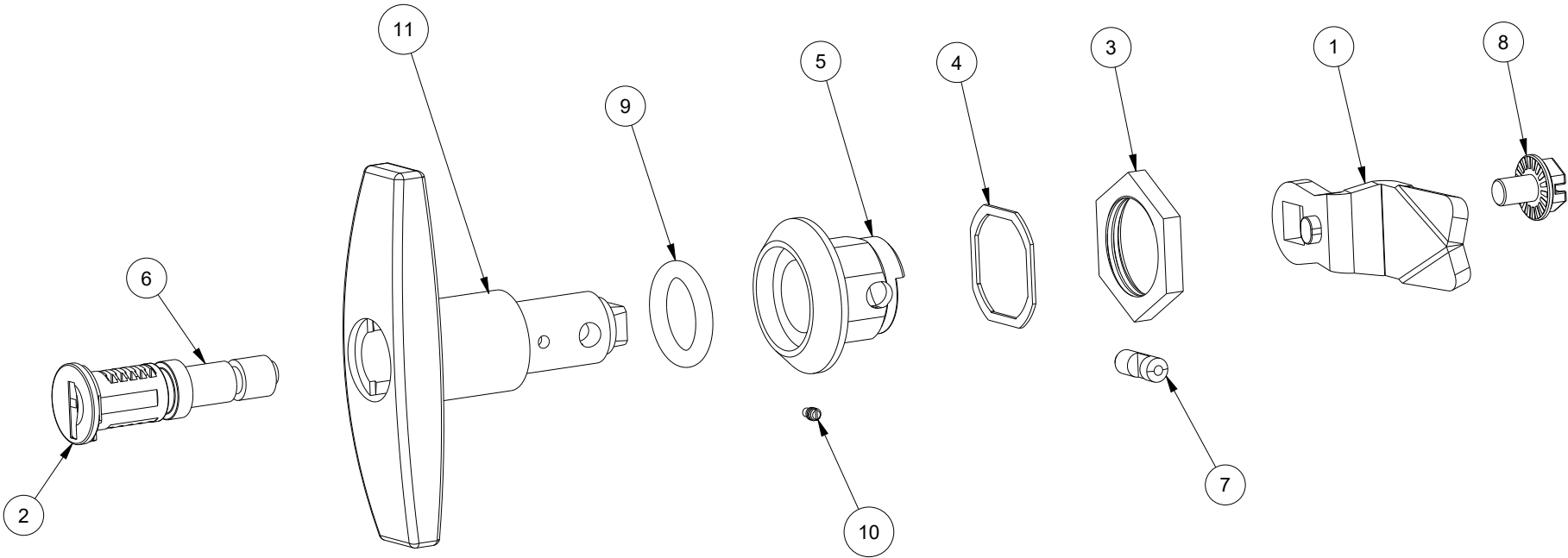


CUTOUT DETAIL


DESCRIPTION:
T-Handle - Keyed Alike - EK333 - 28 mm. Cam - Zinc Die Cast - Chrome Plated - Part ID 101416

DRAWN BY: Sherven		CUSTOMER: SAGINAW CONTROL & ENGINEERING	
DATE: 1/15/24		PART NUMBER: SCE-ELKLT	REV: --
ZINC DIE CAST CHROME PLATED		CUSTOMER I.D.: SCE2	 Your Enclosure Source®
		SHEET: 1 OF 2	

BILL OF MATERIAL			
ITEM	QTY	PART DESCRIPTION	PART I.D.
1	1	Cam - Single Point - 28mm - Steel, - Zinc Clear	NA
2	1	Cap - Stainless Steel	NA
3	1	Earth Nut - M22 x 1.5 - Steel - Zinc Plated	NA
4	1	Flat Seal - NBR - Black	NA
5	1	Housing for Lockable Handle - Zinc Die Cast - Chrome Plated	NA
6	1	Lock Shaft - Zinc Die Cast - Stainless Steel Cap	NA
7	1	Locking Pin - Steel - Zinc Plated	NA
8	1	Locking Screw - M6 x 8 mm. - Steel - Zinc Plated	NA
9	1	O-Ring - 15 mm. I.D x 3.5 mm. Thick - Rubber - Black	NA
10	1	Set Screw - Steel	NA
11	1	T-Handle - Zinc Die Cast - Chrome Plated	NA



DESCRIPTION:
T-Handle - Keyed Alike - EK333 - 28 mm. Cam - Zinc Die Cast - Chrome Plated - Part ID 101416

DRAWN BY: Sherven		CUSTOMER: SAGINAW CONTROL & ENGINEERING	
DATE: 1/15/24		PART NUMBER: SCE-ELKLT	REV: --
ZINC DIE CAST CHROME PLATED		CUSTOMER I.D.: SCE2	 Your Enclosure Source®
		SHEET: 2 OF 2	