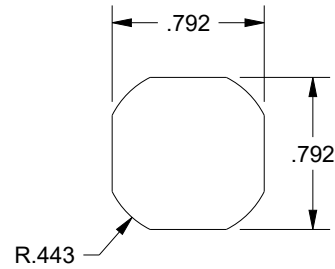
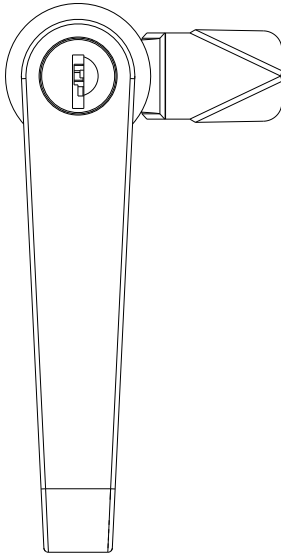
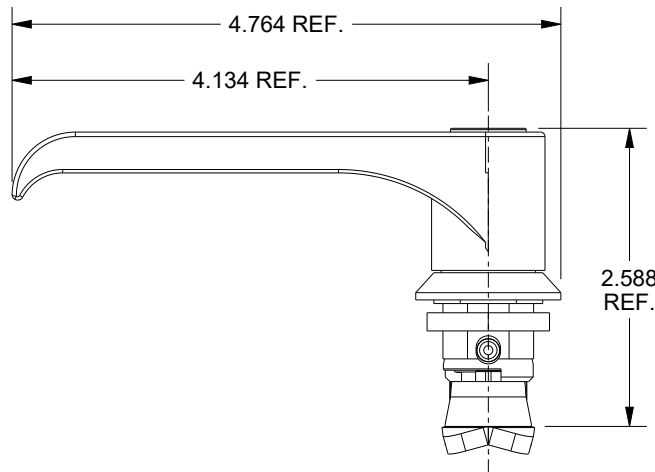
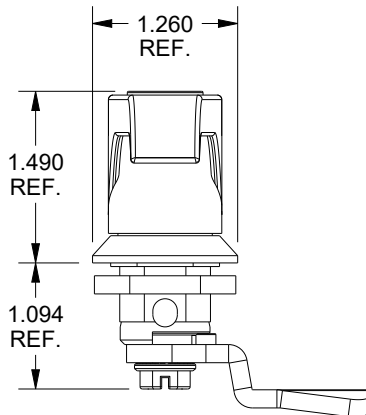
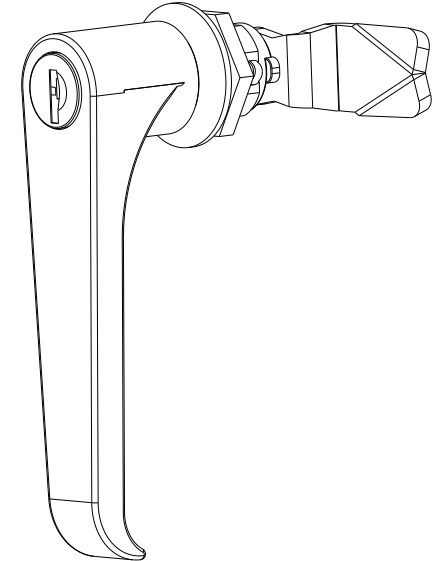


# SCE-ELKL




CUTOUT DETAIL

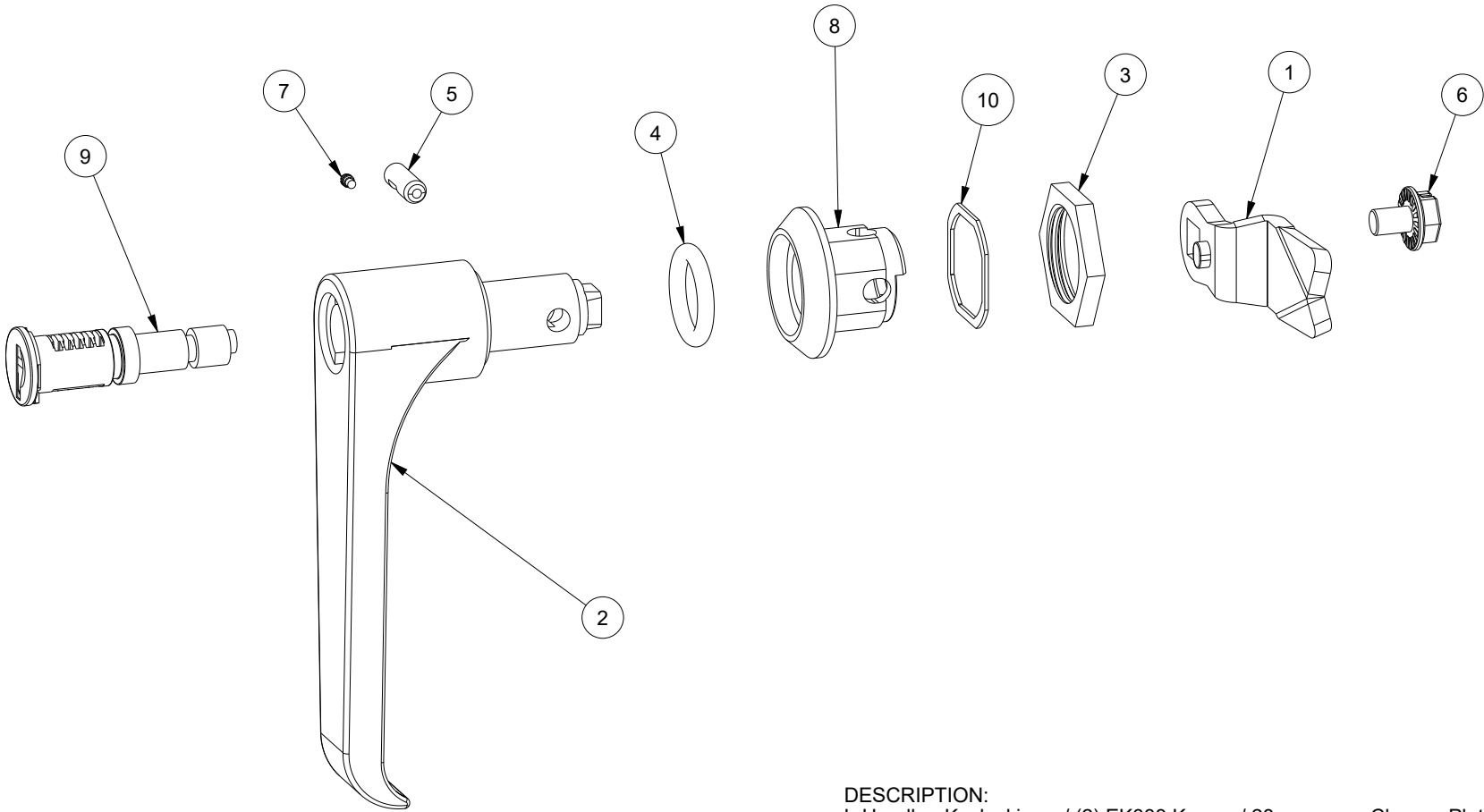


THIS HANDLE REQUIRES A  
CAM WITH AN EXTERNAL  
CAM STOP


DESCRIPTION:  
L-Handle - Keylocking w/ (2) EK333 Key - w/ 28mm cam - Chrome Plated - PART ID 100943

DRAWN BY: Sherven	CUSTOMER: SAGINAW CONTROL & ENGINEERING	
DATE: 1/4/24	PART NUMBER: SCE-ELKL	REV: --
CHROME PLATED	CUSTOMER I.D.: SCE2	 Your Enclosure Source®
	SHEET: 1 OF 2	

ITEM	QTY	PART DESCRIPTION
1	1	Cam - Single Point - 28mm - w/ Exteranal Stop - Steel - Zinc Clear
2	1	Handle - 1/4-Turn - Zinc Die Cast - Chrome
3	1	Nut - 1/4-Turn - Steel
4	1	O-Ring - Sealing
5	1	Pin - Indexing
6	1	Screw - 1/4-Turn - Steel
7	1	Set Screw
8	1	Shaft - 1/4-Turn - Zinc Die Cast - Chrome
9	1	Shaft - Lock - 1/4-Turn - Steel
10	1	Washer - Sealing - 1/4-Turn - Neoprene



DESCRIPTION:  
 L-Handle - Keylocking w/ (2) EK333 Key - w/ 28mm cam - Chrome Plated - PART ID 100943

DRAWN BY: Sherven	CUSTOMER: SAGINAW CONTROL & ENGINEERING		
DATE: 1/4/24	PART NUMBER: SCE-ELKL		REV: --
CHROME PLATED	CUSTOMER I.D.: SCE2	 Your Enclosure Source®	
	SHEET: 2 OF 2		