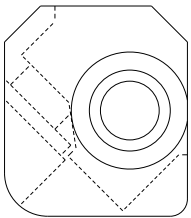
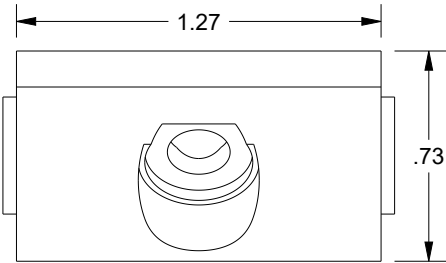
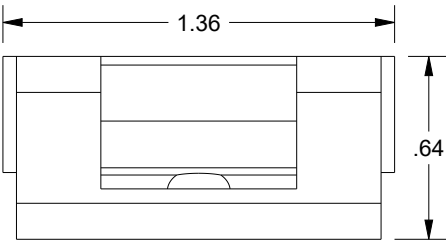
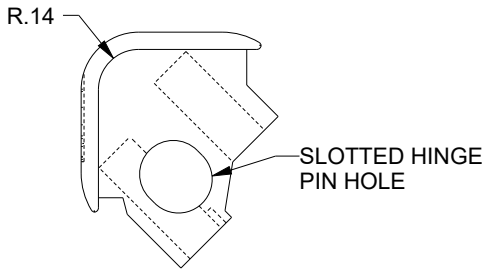
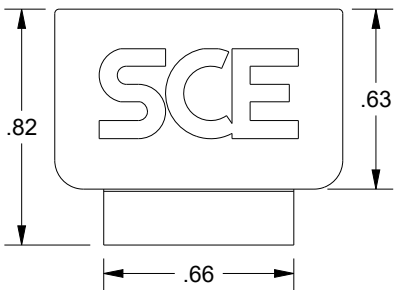
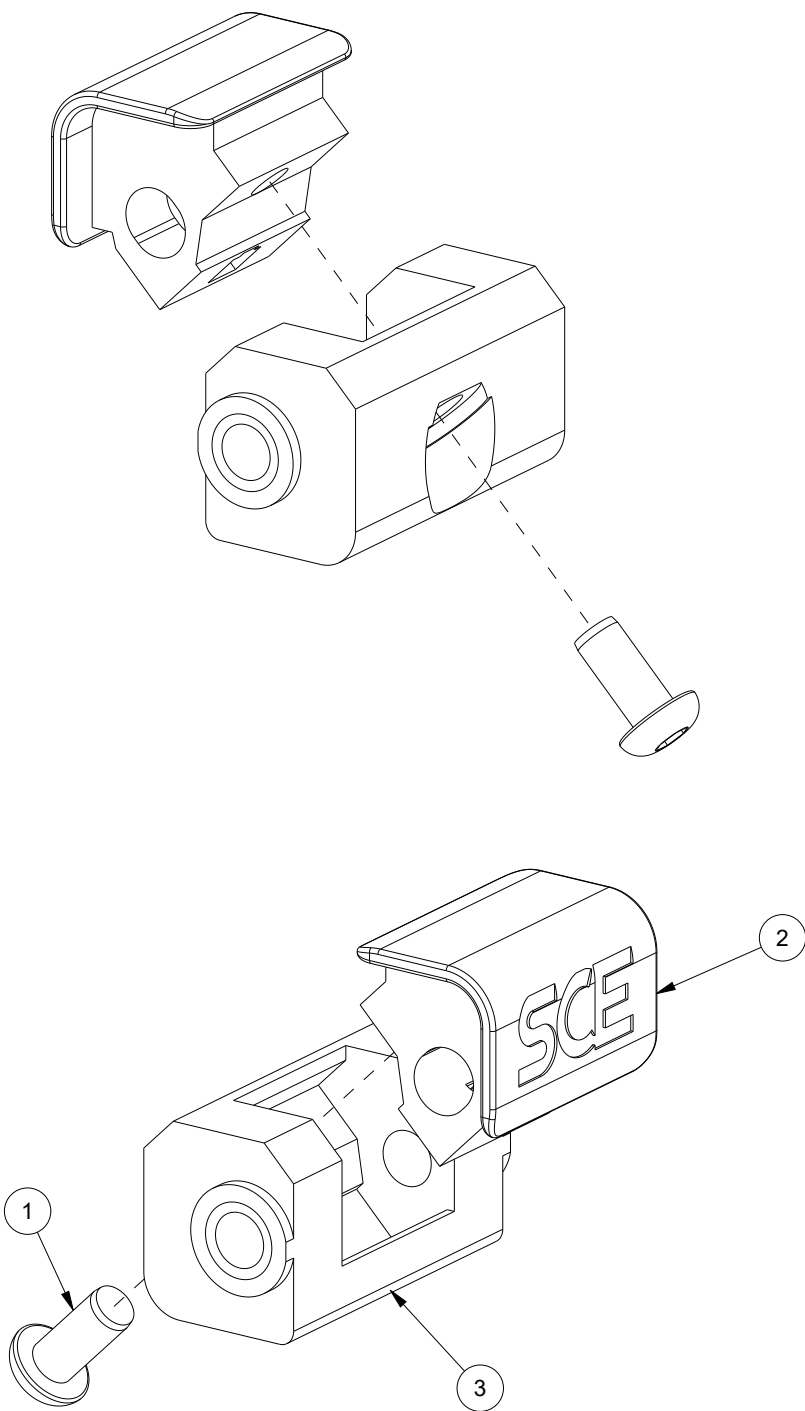


SAGINAW CONTROL & ENGINEERING

SCE-DHA14



BILL OF MATERIAL

ITEM	QTY	PART DESCRIPTION	PART I.D.
1	2	Screw, Button Head Torx, 10-32 X 3/8", Stainless Steel	102483
2	2	Small Outer Hinge, 1.00" x 0.625", Zamak 5 Zinc, Trivalent Cromate w/E-Seal	126391
3	2	Inner Hinge, 1.36" x 0.73", Zamak 5 Zinc, Trivalent Cromate w/E-Seal	126393