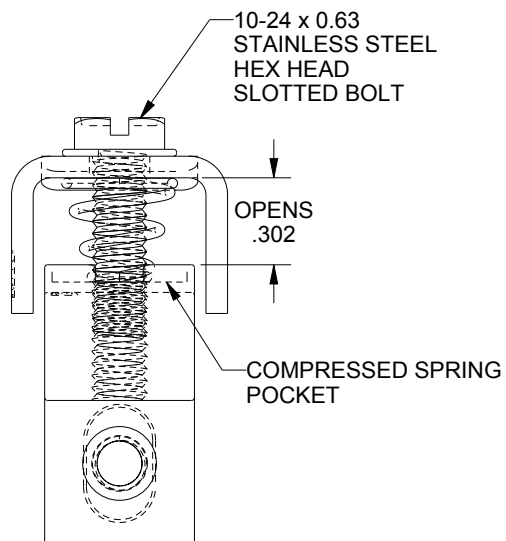
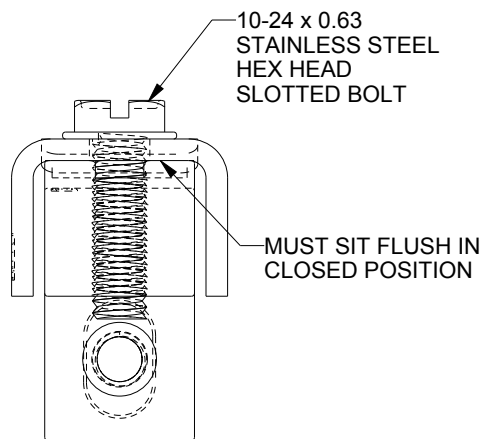
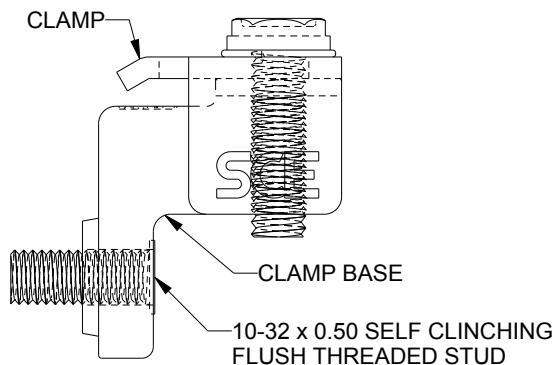
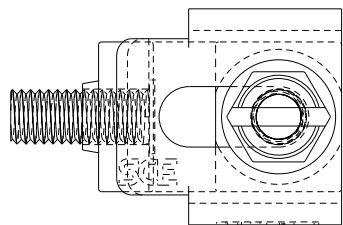


## OPEN POSITION

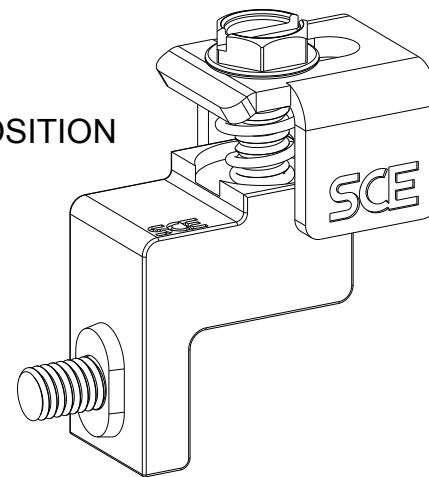


## CLOSED POSITION

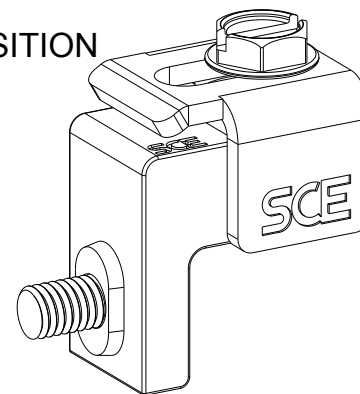


ITEM	QTY	PART DESCRIPTION
1	1	Base, CH Style, Type 304 Stainless Steel
2	1	Clamp, Sliding, CH Style, 0.075" Type 304 Stainless Steel
3	1	Screw, Flanged, Hex Head, Slotted, 10-24 x 5/8", 304 Stainless Steel
4	1	Self Clinching Flush Head Stud 10-32 X 1/2", 304 Stainless Steel
5	1	Sprint, 0.035 Dia., 304 Stainless Steel

## OPEN POSITION



## CLOSED POSITION



### TOLERANCES

UNLESS SPECIFIED

LINEAR: 0.XX ± 0.020

LINEAR: 0.XXX ± 0.010

DRAWN BY: Kajdan

DATE: 10/07/15

MATERIAL UNLESS SPECIFIED

TYPE 304 STAINLESS STEEL

CUSTOMER: SAGINAW CONTROL & ENGINEERING

PART NUMBER: SCE-CHCLAMPSS

COMPONENT: ASSEMBLY

SHEET: 1 OF 1

REV: --



Your Enclosure Source®

BY	REV.	DESCRIPTION OF CHANGES	DATE
----	------	------------------------	------