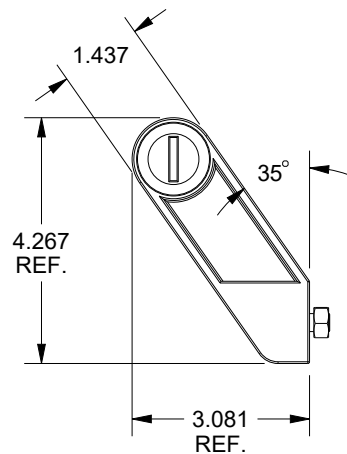
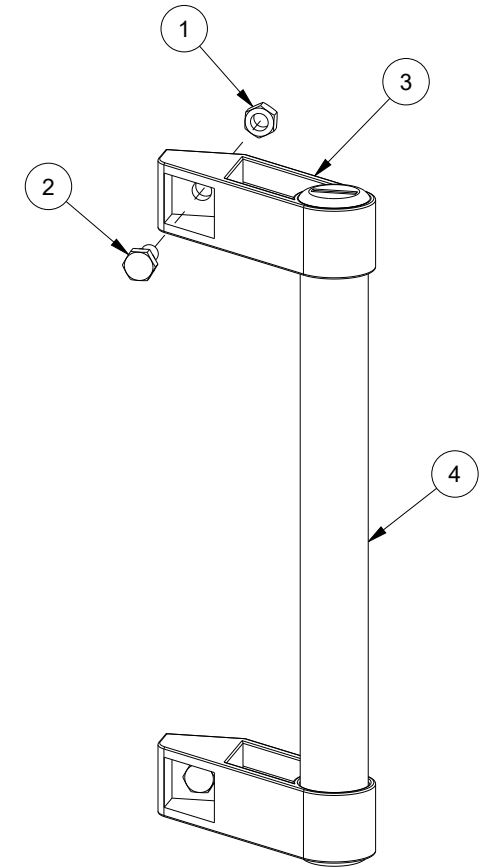
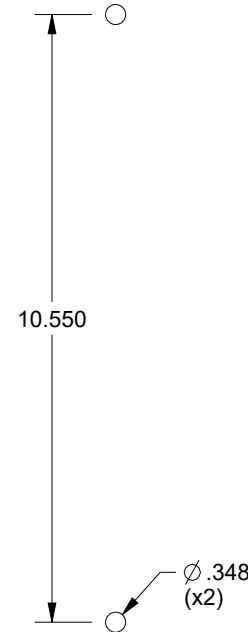
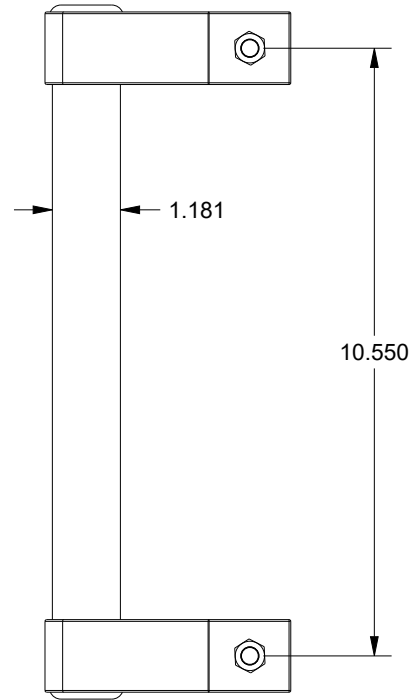
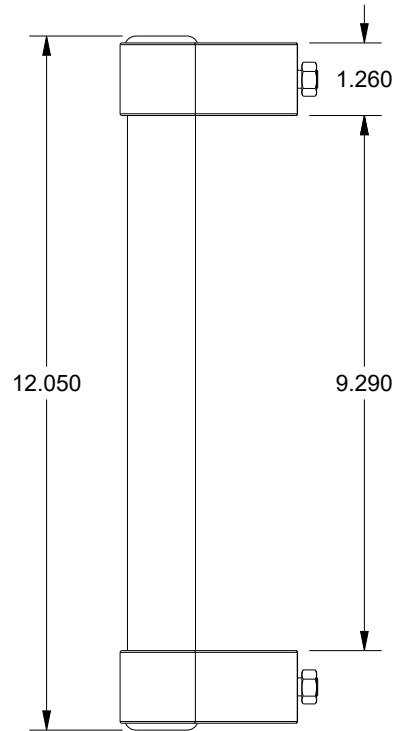



# BILL OF MATERIAL

ITEM	QTY	PART DESCRIPTION	PART I.D.
1	2	Hex Nut - M8-1.25 - Steel - Zinc Plated Clear	103256
2	2	Hex Head Cap Screw - Full Threaded M8-1.25 X 16 mm. - Steel - Zinc Plated Clear	107253
3	2	Pull Handle - 35 Degree Handle Stay - 75 mm. - Polyamide Plastic - Black	NA
4	1	Pull Handle - Steel Tube - 30 mm X 266 mm - Steel - Plastic Coated - Black	NA



## DESCRIPTION:

Pull Handle - 35 Degree Handle Stay - Kit w/2 end stays and 1 tube - 30 mm. X 266 mm. lg - 75 mm. - Polyamide Plastic - Black - PART ID 118340

DRAWN BY: Sherven	CUSTOMER: SAGINAW CONTROL & ENGINEERING		
DATE: 1/11/24	PART NUMBER: SCE-AUHK		REV: --
POLYAMIDE PLASTIC & STEEL PLASTIC COATED	CUSTOMER I.D.: SCE2	 Your Enclosure Source®	
	SHEET: 1 OF 1		