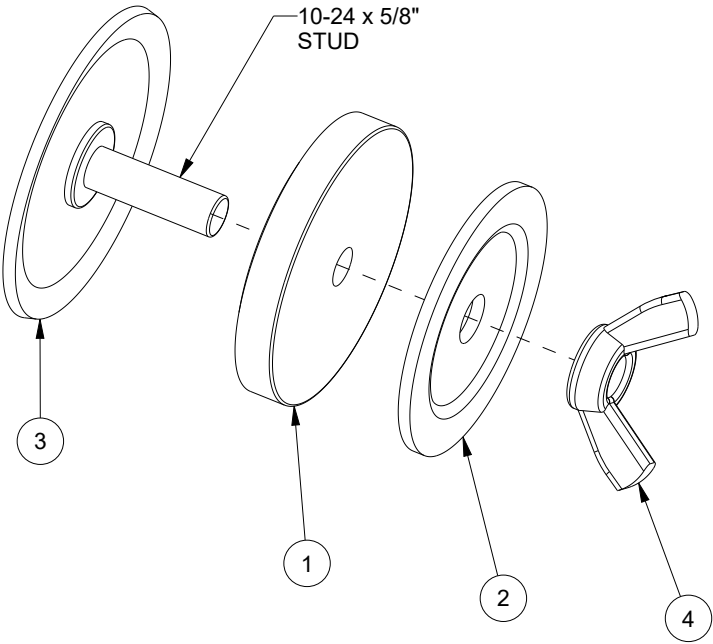
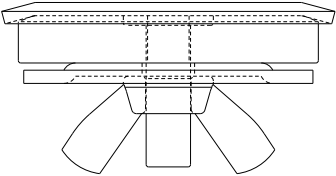
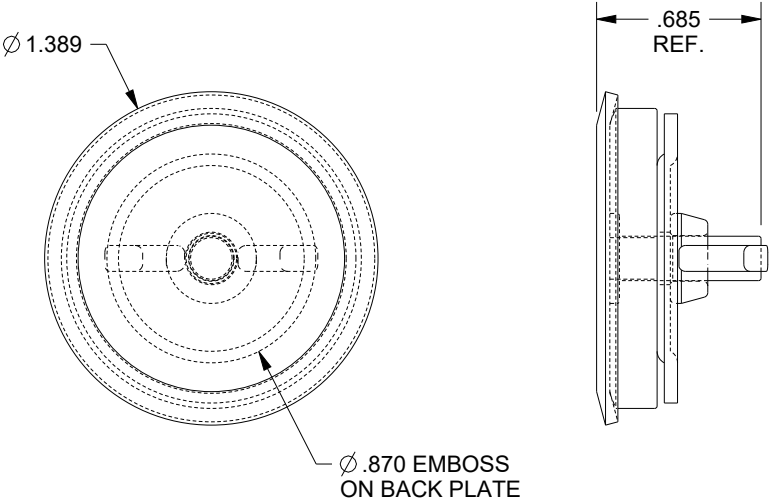



BILL OF MATERIAL			
ITEM	QTY	PART DESCRIPTION	PART I.D.
1	1	Die Cut Gasket - Small Hole Plug - 0.197 X 1.250 OD X .173 ID	NA
2	1	Hole Plug Base Plate - 1.20 X 0.09 - Steel - Zinc Plated Clear	NA
3	1	Hole Plug Face Plate - 1.39 X 0.10 - Steel - Zinc Plated Clear	NA
4	1	Wing Nut - 10-24 - Steel - Zinc Plated Clear	NA



HOLE PLUG FOR 22MM PUSHBUTTON CUTOUT
EXPLODED VIEW

PART DESCRIPTION:
Bolt Pack - Hole Seal Assembly - 1.39 X .10 - 10-24 - Steel - SCE-05 - QTY. 25 - PART ID 128356

DRAWN BY: Sherven	CUSTOMER: SAGINAW CONTROL & ENGINEERING		
DATE: 4/18/24	PART NUMBER: SCE-ASPBG-05-25		REV: --
0.55" COLD ROLLED STEEL	CUSTOMER I.D.: SCE2	 Your Enclosure Source®	
MATERIAL UNLESS SPECIFIED	SHEET: 1 OF 1		