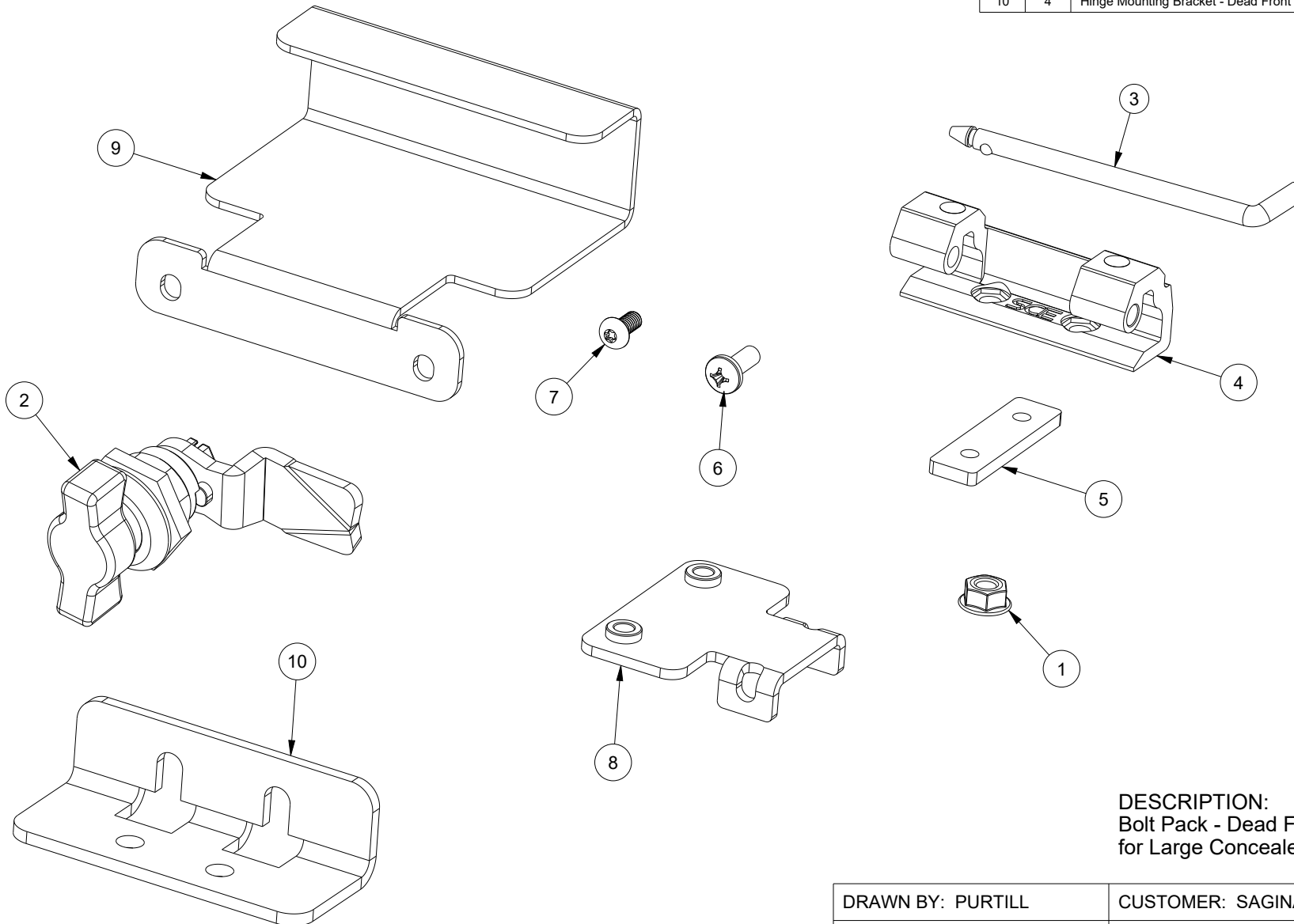



# BILL OF MATERIAL

ITEM	QTY	PART DESCRIPTION	PART I.D.
1	4	Flange Nut - Serrated - 10-32 - Steel - Zinc Plated Clear	100897
2	2	Door Latch - Wing Knob - Open Position- Earth Nut - Non-Locking w/ Cam	101080
3	4	Hinge Pin - SCE Small Concealed - 3.38 X 0.195 - Stainless Steel	101226
4	4	Concealed Hinge - Small w/ SCE Logo - Zinc Die Cast - Zinc Plated Clear	101376
5	4	Nut Plate - 10-32 - Steel - Zinc Plated Clear	102140
6	8	Machine Screw - Pan Head Phillips - 10-32 X 0.50 in. - Steel - Zinc Plated Clear	102470
7	12	Screw - Torx Button Head - Thread Cutting - 10-32 X 0.44 - Stainless Steel	102483
8	4	Concealed Hinge - Bolt On - Dead Front Hinge Tab - Steel - Zinc Plated Clear	115751
9	2	Catch Bracket - Dead Front - 2DR LP - 4.06 X 3.50 X 1.25 - Zinc Plated Clear	128426
10	4	Hinge Mounting Bracket - Dead Front - 3.25 X 1.38 X 0.125 - Zinc Plated Clear	128428



DESCRIPTION:  
 Bolt Pack - Dead Front - Four Hinge Mount -  
 for Large Concealed Hinge

DRAWN BY: PURTILL	CUSTOMER: SAGINAW CONTROL & ENGINEERING		
DATE: 08/31/18	PART NUMBER: SCE-128422		REV: --
MATERIAL UNLESS SPECIFIED BILL OF MATERIAL	CUSTOMER I.D.: SCE2	 Your Enclosure Source®	
	SHEET: 1 OF 1		