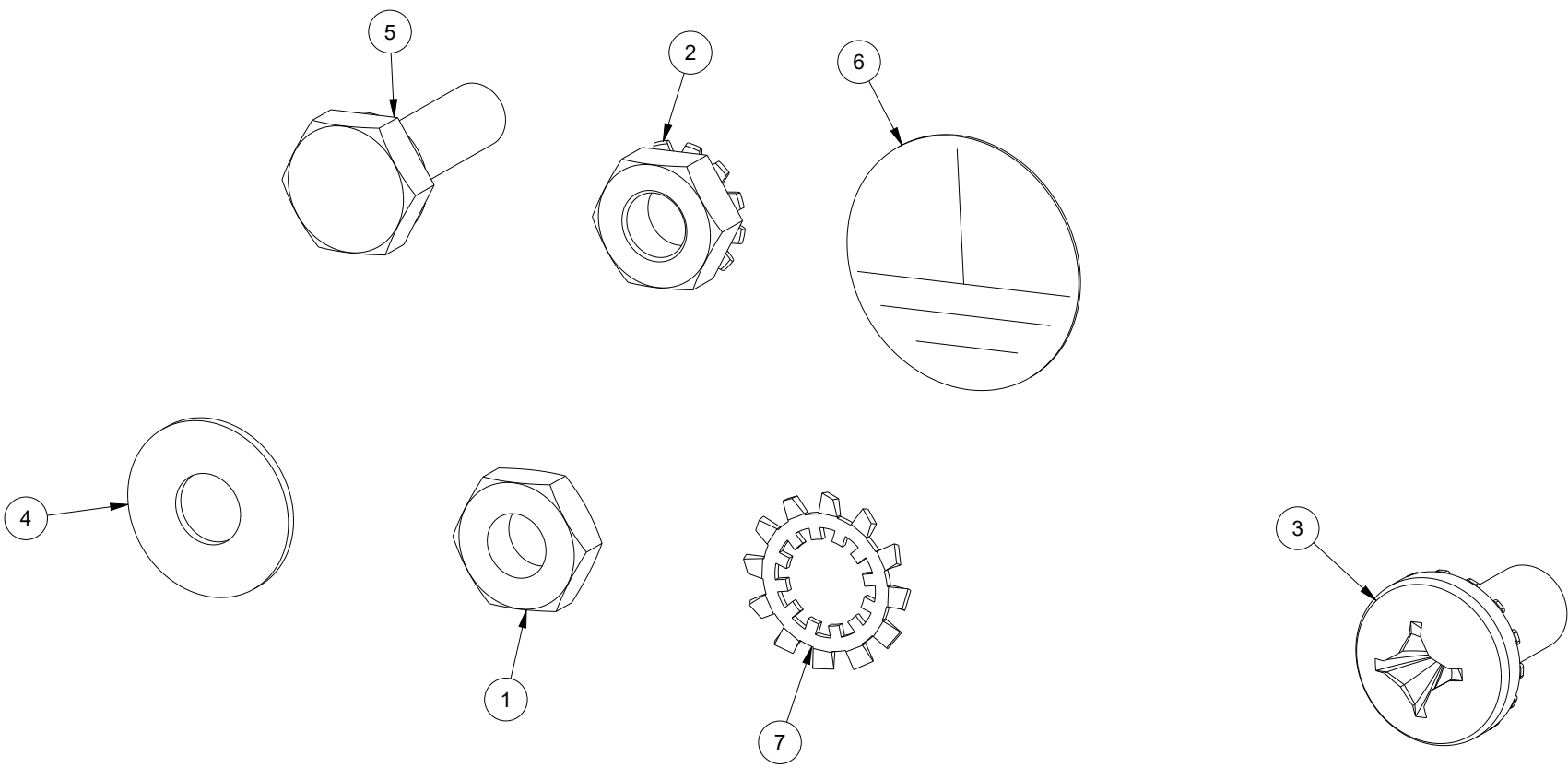



BILL OF MATERIAL			
ITEM	QTY	PART DESCRIPTION	PART I.D.
1	1	Hex Nut - 10-32 - Steel - Zinc Plated Clear	100896
2	1	Flange Nut - Serrated - 10-32 - Steel - Zinc Plated Clear	100897
3	8	Screw - Pan Head Phillips w/ Washer - 0.25-20 X .375 - Steel - Zinc Plated Clear	102522
4	1	Flat Washer - 10-32 - 0.21 X 0.52 - Steel - Zinc Plated Clear	103241
5	1	Hex Head Cap Screw - Full Threaded - 10-32 X 0.63 - Steel - Zinc Plated Clear	104937
6	1	Ground Label - 0.75 inch Dia.	108268
7	1	Tooth Lock Washer - Internal/External - 0.25 - Steel - Zinc Plated Clear	114322



DESCRIPTION:
 Bolt Pack - Master Bolt Pack - Nema 1 Enclosures - (6-8 PCS) - Sub-Panel and Grounding Hardware

DRAWN BY: Titus	CUSTOMER: SAGINAW CONTROL & ENGINEERING		
DATE: 10/09/18	PART NUMBER: SCE-123581		REV: --
MATERIAL UNLESS SPECIFIED SEE BILL OF MATERIAL	CUSTOMER I.D.: SCE1	 Your Enclosure Source®	
	SHEET: 1 OF 1		