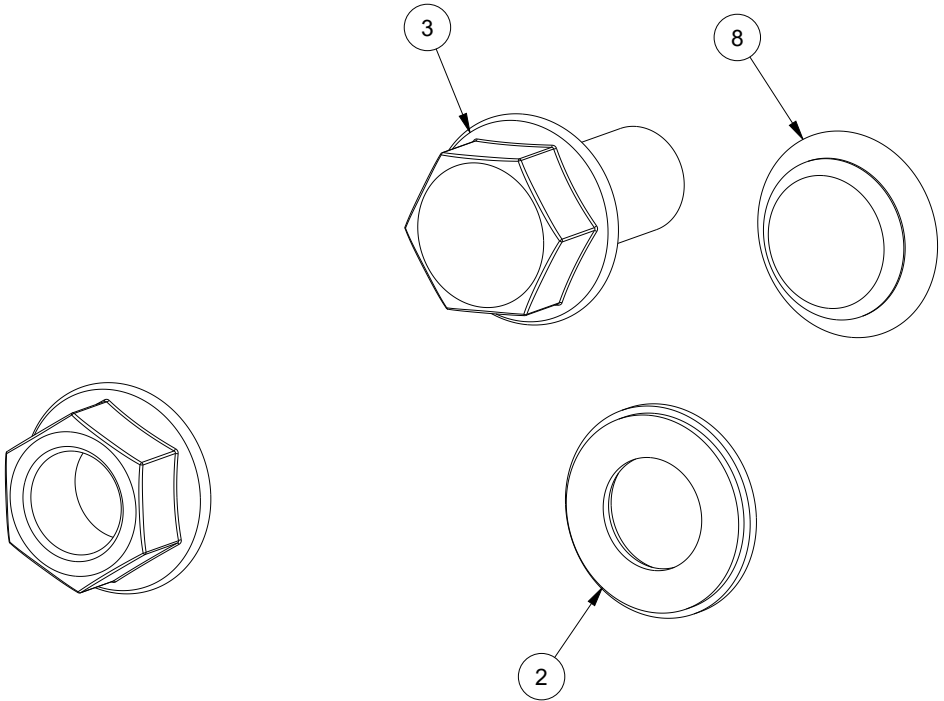
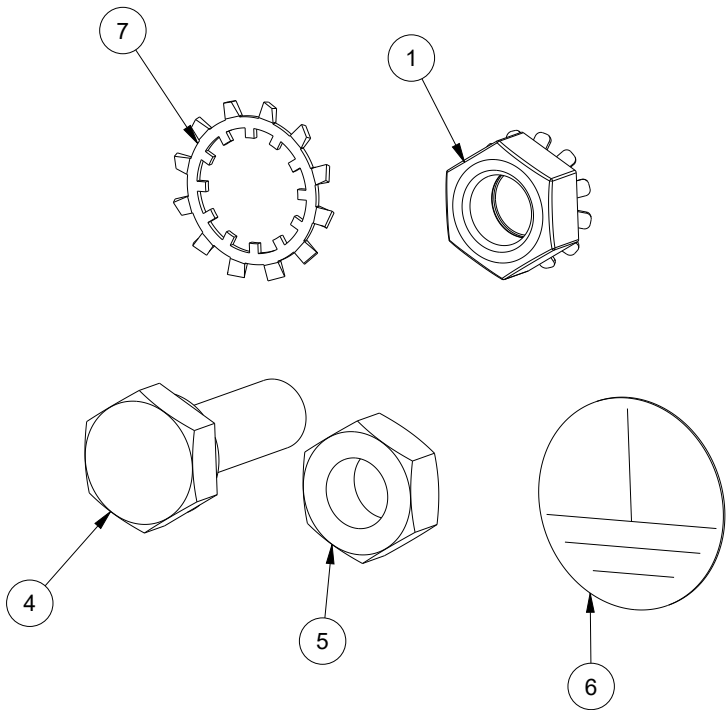



BILL OF MATERIAL			
ITEM	QTY	PART DESCRIPTION	PART I.D.
1	1	Keps Nut - 0.25-20 - Steel - Zinc Plated Clear	100877
2	1	Sealing Washer - 0.375 - 0.425 X 0.725 - Galvanized Steel w/ EPDM Gasket	102172
3	1	Flanged Bolt - Serrated Hex Head - 0.38-16 X 0.75 - Steel - Zinc Plated Clear	102493
4	1	Flanged Bolt - Serrated Hex Head - 0.25-20 X 0.63 - Steel - Zinc Plated Clear	102535
5	1	Hex Nut - 0.25-20 - Steel - Zinc Plated Clear	107827
6	1	Ground Label - 0.75 inch Dia.	108268
7	1	Tooth Lock Washer - Internal/External - 0.375 - Steel - Zinc Plated Clear	114341
8	1	Bolt Pack - Hole Plug - Kit - .44 dia. - ABS Plastic - Black - 4 Per Package	128336



DESCRIPTION:
Master Bolt Pack - EL-LP Enclosure - 4 Pack - Sub-Panel,
Grounding and Mounting Hardware

DRAWN BY: Titus		CUSTOMER: SAGINAW CONTROL & ENGINEERING	
DATE: 10/09/18		PART NUMBER: SCE-122191	REV: --
MATERIAL UNLESS SPECIFIED SEE BILL OF MATERIAL		CUSTOMER I.D.: SCE1	 Your Enclosure Source®
		SHEET: 1 OF 1	