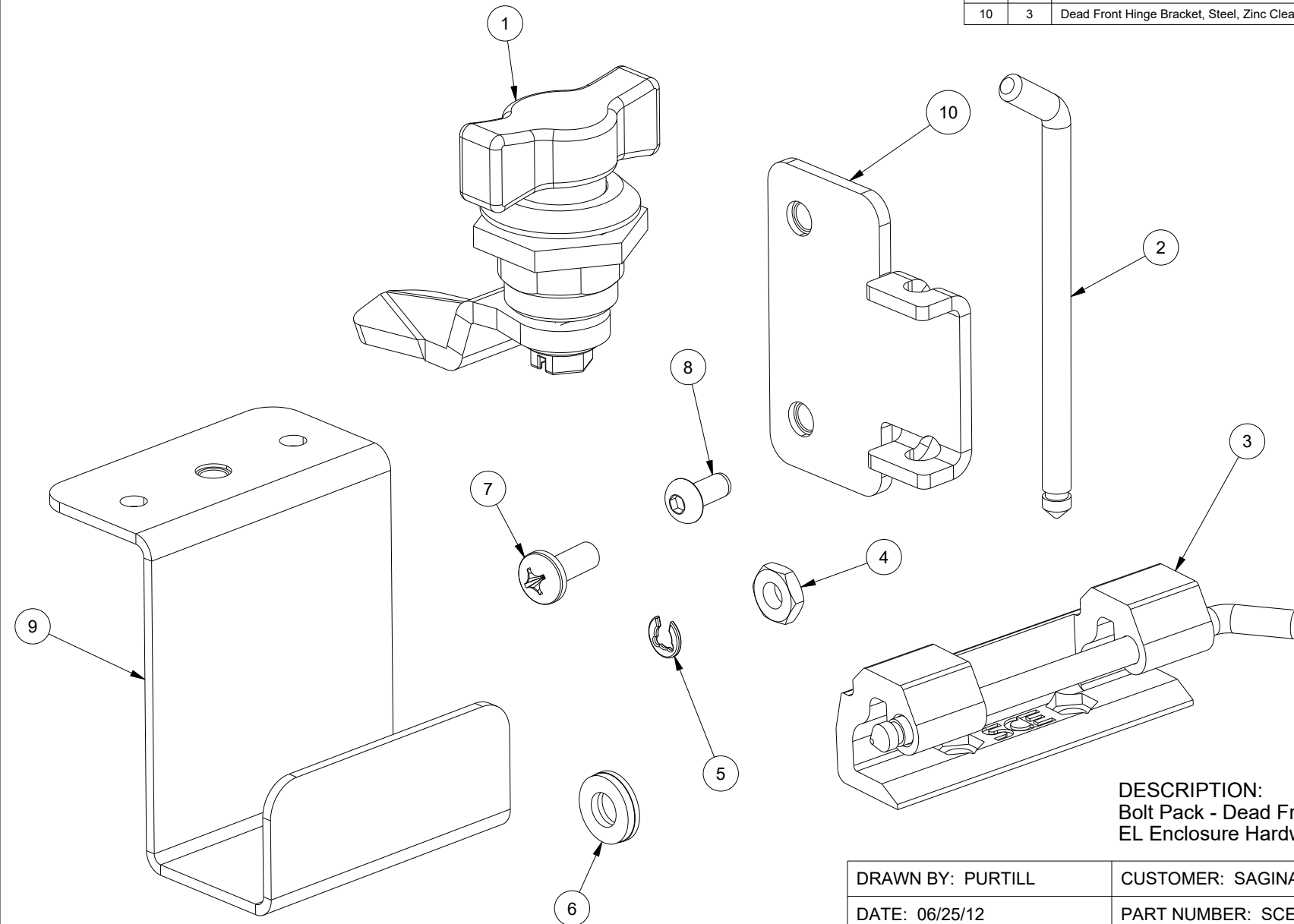



# BILL OF MATERIAL

ITEM	QTY	PART DESCRIPTION	PART I.D.
1	2	Latch, 1/4-Turn, Wing Knob w/ 28mm Cam, Black SCE-DLWKF-28	101080
2	3	Hinge Pin - SCE Small Concealed - 3.38 X 0.195 - Stainless Steel	101226
3	3	Concealed Hinge, Small SCE w/Pin, Zinc Die Cast	101376
4	6	Jam Nut, Hex Full, 10-32, Steel, Zinc	101645
5	3	Retainer, E-Clip, 0.03"Thick X 0.16" ID X 0.35" OD, Stainless	101670
6	2	Washer, Sealing, 0.50 x 0.25, Steel w/Neoprene, Zinc	102152
7	6	Screw, Pan Head Phillips, 10-32 X 1/2", Steel, Zinc Clear	102470
8	2	Screw, Button Head Torx, 10-32 X 3/8", Stainless	102483
9	2	Dead Front Catch Bracket, 24in High & Greater	115161
10	3	Dead Front Hinge Bracket, Steel, Zinc Clear	115751



**DESCRIPTION:**  
Bolt Pack - Dead Front, Three Hinge Hardware -  
EL Enclosure Hardware

DRAWN BY: PURTILL	CUSTOMER: SAGINAW CONTROL & ENGINEERING	
DATE: 06/25/12	PART NUMBER: SCE-113347	REV: --
MATERIAL UNLESS SPECIFIED SEE BILL OF MATERIAL	CUSTOMER I.D.: SCE2	 Your Enclosure Source®
	SHEET: 1 OF 1	