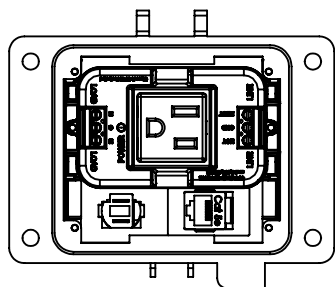
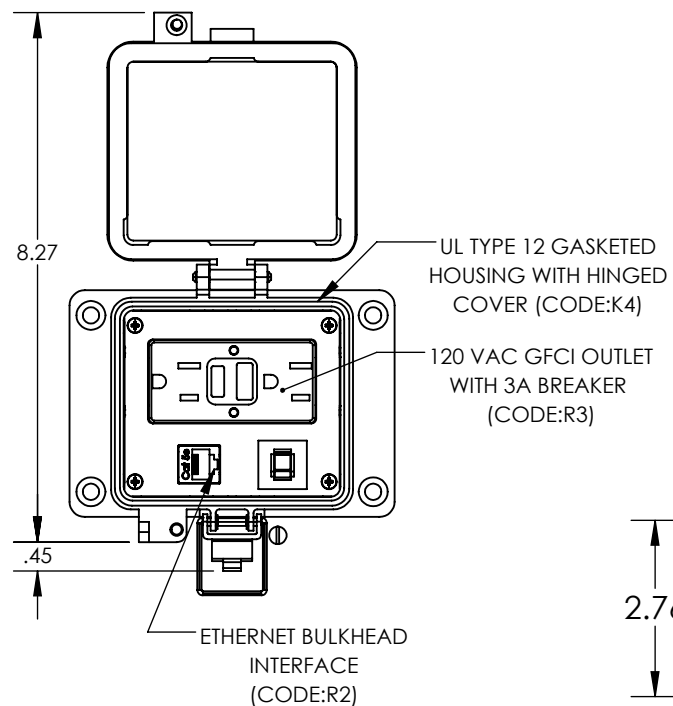
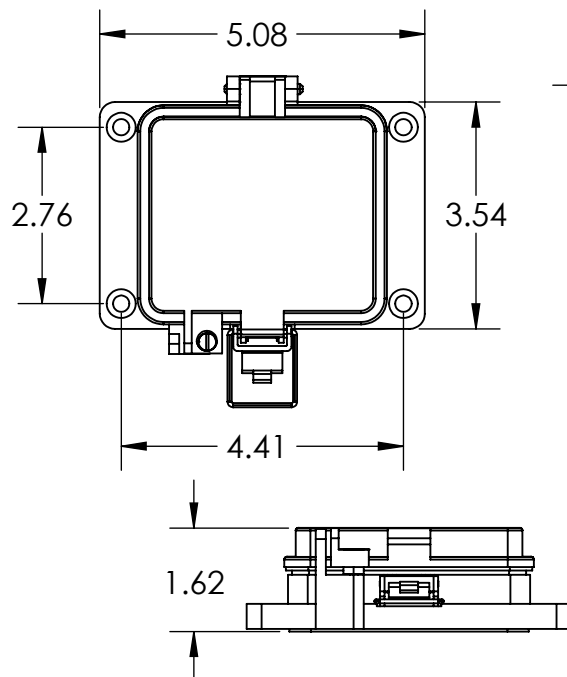


SAGINAW CONTROL & ENGINEERING

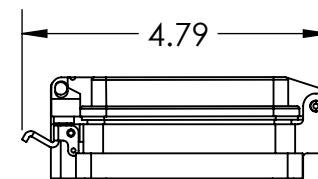
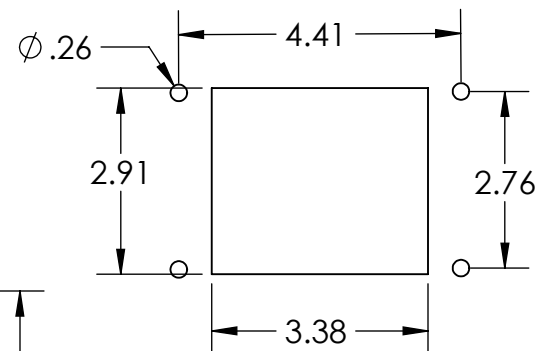
P-R2-K4RF3-U450



BACK VIEW



CUTOUT DETAIL



NOTES:

- 1.) HOUSING INSERTS COMPONENT LOCATIONS ARE APPROXIMATE.
- 2.) HOUSINGS ARE UL RECOGNIZED TYPE 12 MINIMUM OTHER ENVIRONMENTAL RATINGS MAY APPLY.
- 3.) FINAL ASSEMBLIES: UL RECOGNIZED, CSA, AND CE MAY APPLY CONSULT FACTORY.
- 4.) COVERS: CLEAR, UL VO FLAME RATING, & UV RATED.

DRAWN BY: NATHAN KRAMER		CUSTOMER: SAGINAW CONTROL & ENGINEERING	
DATE: 10/24/23		SIZE A	REV: --
FINISH: POWDER COATED LIGHT GRAY		PART NUMBER: P-R2-K4RF3-U450	
SCALE: 1:3		SHEET 1 OF 1	