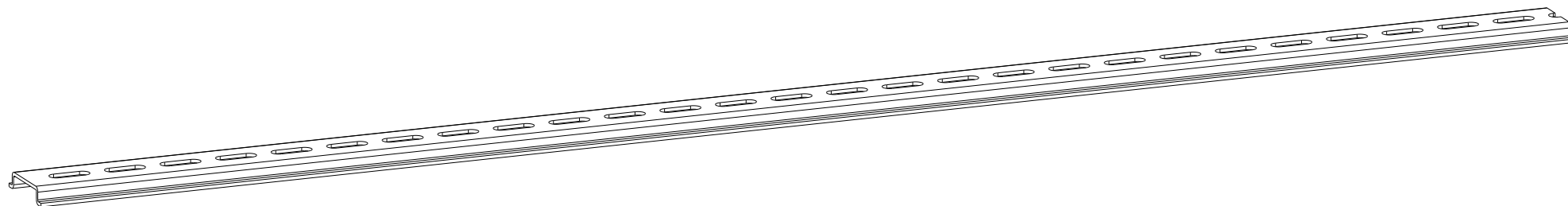
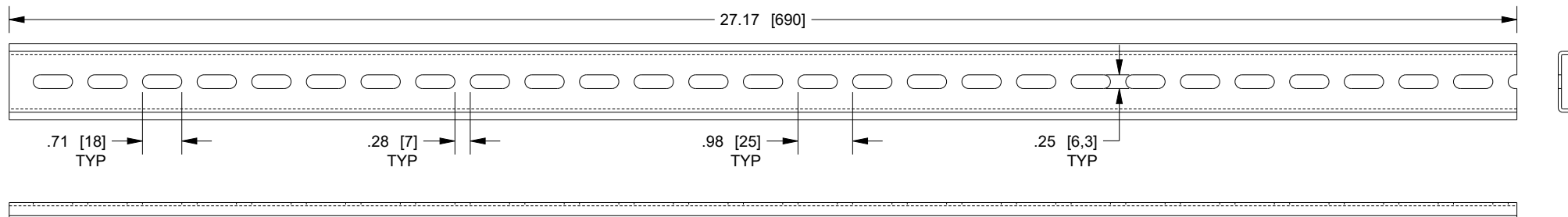



DIN RAIL PROFILE DETAIL



DESCRIPTION:
Modular Enclosure - DIN RAIL - 690 mm - Zinc Plated

DRAWN BY: Bauer		CUSTOMER: SAGINAW CONTROL & ENGINEERING	
DATE: 04/23/25		PART NUMBER: CPP844	REV: --
0.060" CARBON STEEL - ZINC PLATED MATERIAL UNLESS SPECIFIED		CUSTOMER I.D.: SCE2	 Your Enclosure Source®
PAINT SPECIFICATION REFER TO ORDER CONFIRMATION		SHEET: 1 OF 1	