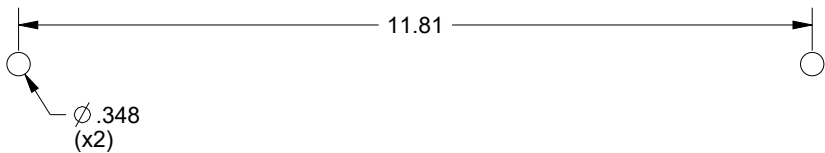
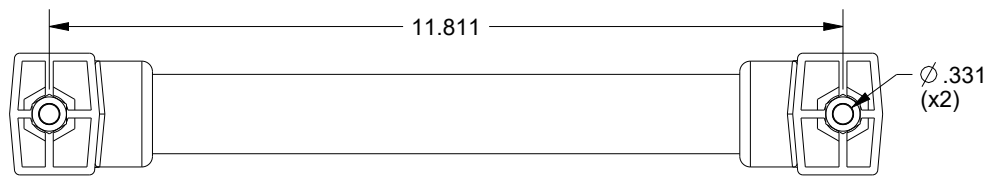
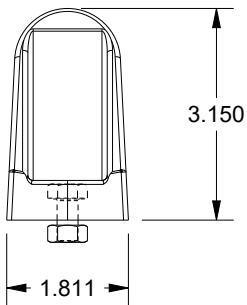
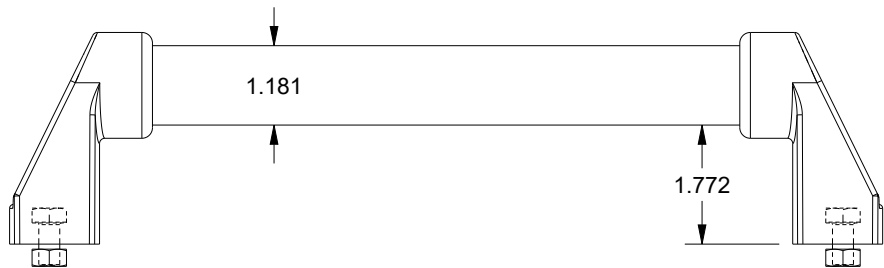
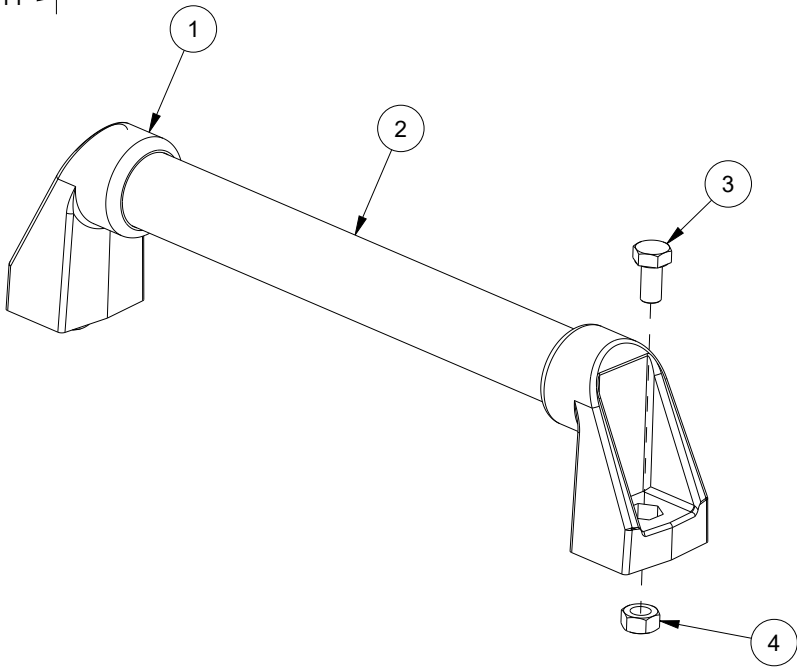


# SCE-UHK13


BILL OF MATERIAL			
ITEM	QTY	PART DESCRIPTION	PART I.D.
1	2	Handle - End Stay - Polyamide - Black	NA
2	1	Handle - Tube - Steel - Plastic Coated	NA
3	2	Hex Head Cap Screw - Full Threaded M8-1.25 X 16 mm. - Steel - Zinc Plated Clear	NA
4	2	Hex Nut - M8-1.25 - Steel - Zinc Plated Clear	NA



CUTOUT DETAIL



DESCRIPTION:  
Pull Handle - w/2 End Stays Per Handle - 13.00 X 3.19 - Steel w/ Polyamide End Stay - Black - PART ID 101684

DRAWN BY: Sherven	CUSTOMER: SAGINAW CONTROL & ENGINEERING		
DATE: 1/10/24	PART NUMBER: SCE-UHK13		REV: --
POLYAMIDE PLASTIC & STEEL PLASTIC COATED	CUSTOMER I.D.: SCE2	 Your Enclosure Source®	
	SHEET: 1 OF 1		