

# Padlock Door Handle With Large Door Rod Kit



INSERT STOP PIN HERE  
HANDLE TURNS COUNTER CLOCKWISE

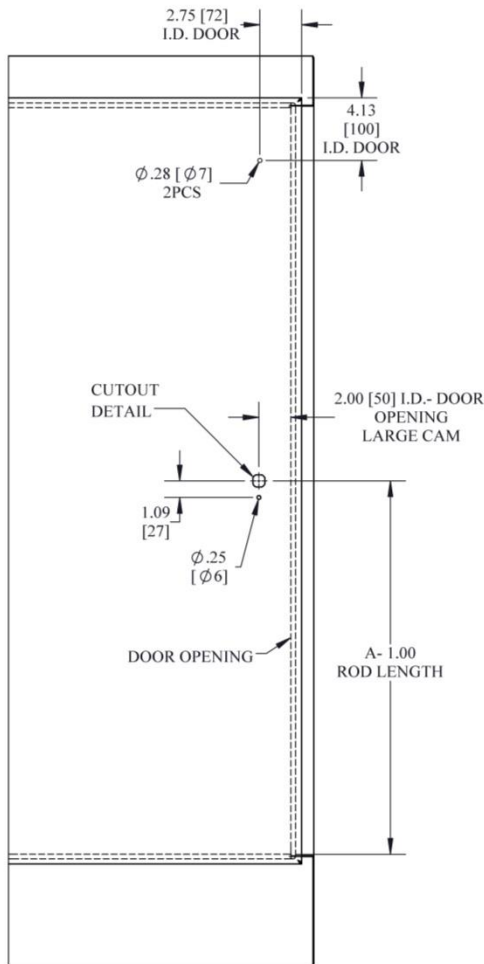


INSERT STOP PIN HERE  
HANDLE TURNS CLOCKWISE

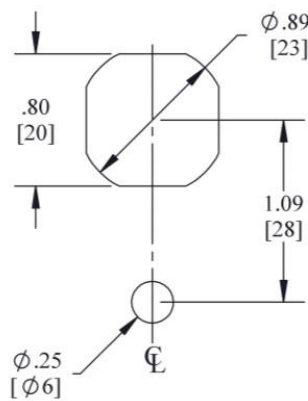
INSTALLATION OF SCE DOOR HARDWARE ON ENCLOSURES THAT DO NOT HAVE HANDLES, OR PROVISIONS FOR HANDLES.

## "SCE-ARK36" LARGE DOOR ROD KIT FOR 2 OR 3 POINT LATCHING

1. LOCATE AND DRILL HANDLE AND ROD GUIDE MOUNTING HOLES.
2. INSTALL ROD GUIDES
3. MEASURE DOOR OPENING HEIGHT. DOOR ROD LENGTH = (HEIGHT/2)-1.00
4. INSTALL DOOR HANDLE AND LATCH PLATE.
5. INSERT DOOR ROD THROUGH THE ROD GUIDE BEFORE ASSEMBLING THE RAMP SHOES.
6. INSTALL RAMP SHOES TO THE DOOR RODS AND INSERT THE 10-32 SET SCREW. THEN ATTACH DOOR RODS TO THE LATCH PLATE.



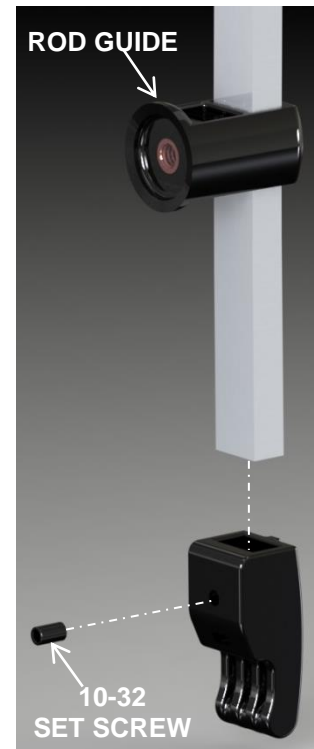
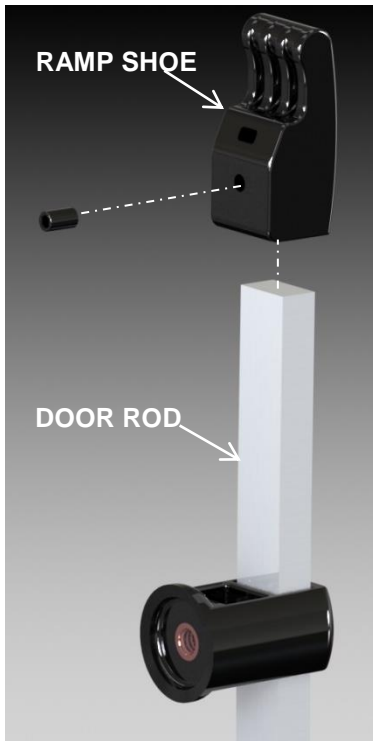
### CUTOUT DETAIL



### INCLUDES...



# Padlock Door Handle With Large Door Rod Kit



## **RECOMMENDED HANDLES**

- SCE-PH5 (5.00 [127] PADLOCKABLE HANDLE)
- SCE-PCH5 (5.00 [127] PADLOCKABLE SLOTTED COIN PROOF HANDLE)
- SCE-PCH5-7SC (5.00 [127] PADLOCKABLE 7MM SQUARE COIN PROOF HANDLE)
- SCE-PKH5 (5.00 [127] PADLOCKABLE KEY LOCKING HANDLE)
  
- SCE-PH7 (7.00 [178] PADLOCKABLE HANDLE)
- SCE-PCH7 (7.00 [178] PADLOCKABLE SLOTTED COIN PROOF HANDLE)
- SCE-PCH7-7SC (7.00 [178] PADLOCKABLE 7MM SQUARE COIN PROOF HANDLE)
- SCE-PKH7 (7.00 [178] PADLOCKABLE KEY LOCKING HANDLE)