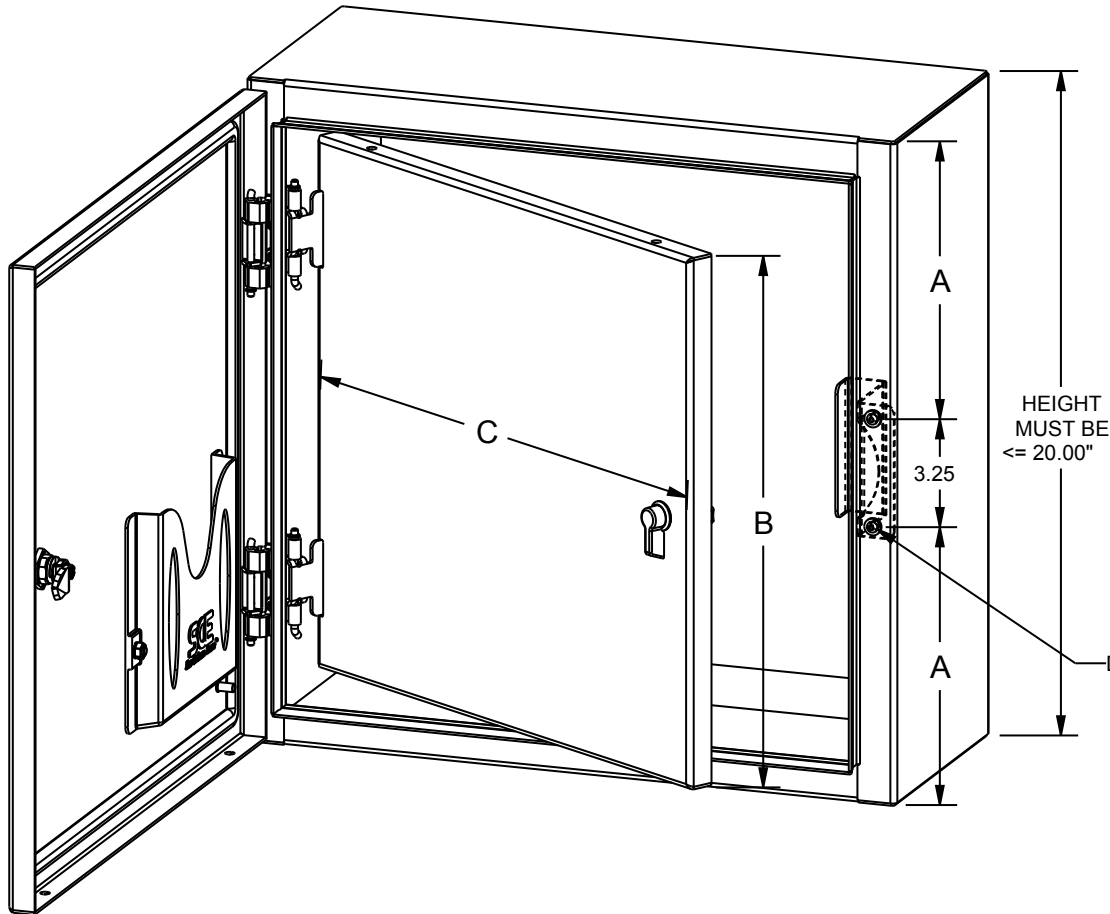
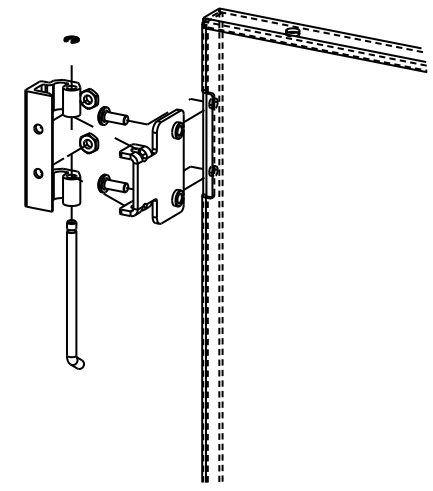


# SAGINAW CONTROL & ENGINEERING DEAD FRONT, WALL MOUNT ENCLOSURES THAT ARE ≤ 20" IN HEIGHT

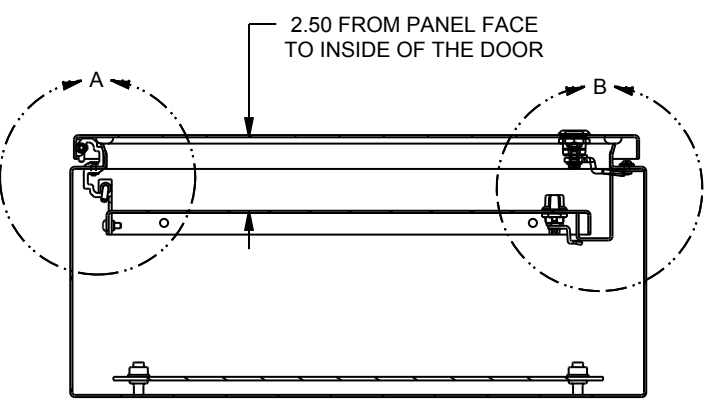


DEAD FRONT PANEL SIZE:  
 WHEN ENCL. HEIGHT > 16"  
 $A = (\text{ENCL. HEIGHT} - 3.25) / 2$   
 $B = (\text{ENCL. HEIGHT} - 4.00)$   
 $C = (\text{ENCL. WIDTH} - 3.19)$   
 WHEN ENCL. HEIGHT ≤ 16"  
 $A = (\text{ENCL. HEIGHT} - 3.25) / 2$   
 $B = (\text{ENCL. HEIGHT} - 3.50)$   
 $C = (\text{ENCL. WIDTH} - 3.19)$   
 NOTE:  
 IF ENCLOSURE HEIGHT ≤ 12"  
 YOU SHOULD CONVERT TO ELJ  
 STYLE ENCL. AND DEAD FRONT

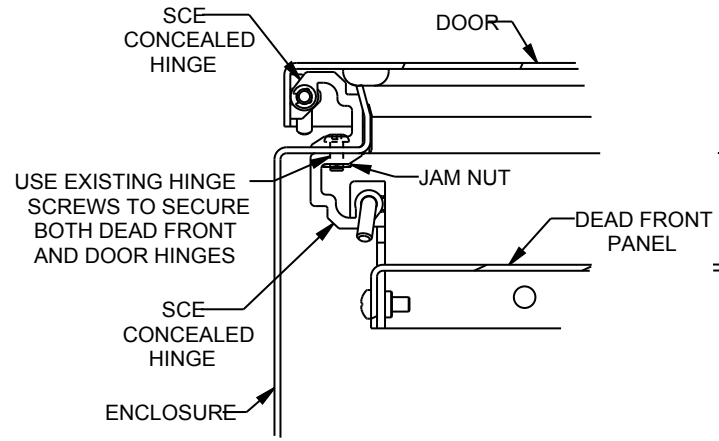
DRILL  $\phi .218$   
 HOLES FOR  
 CATCH (x2)



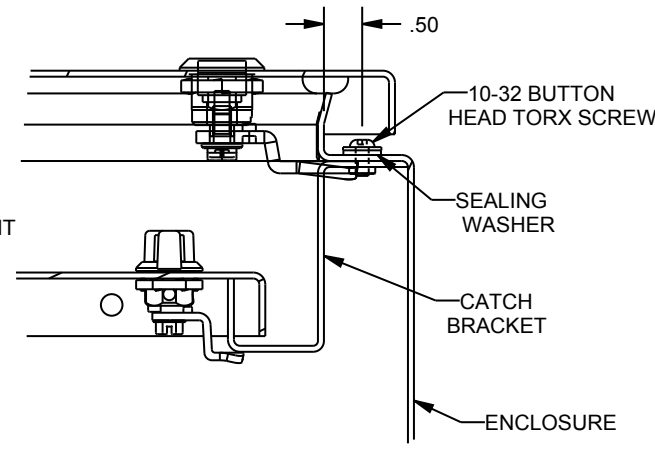
EXPLODED HINGE  
 DETAIL



VIEW SHOWN WITH BOTTOM REMOVED



DETAIL A



DETAIL B