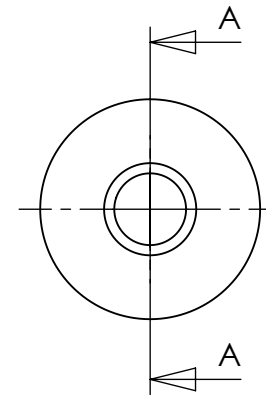
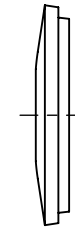


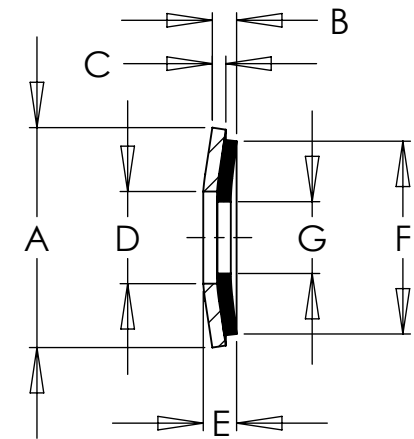
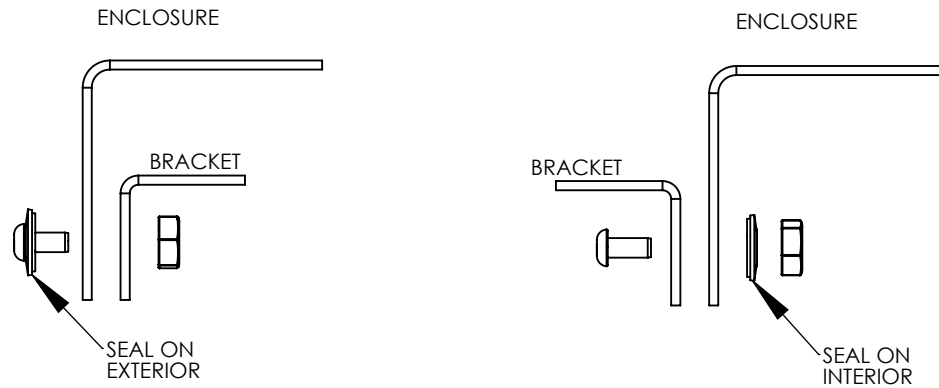
SEALING WASHERS
INTENDED FOR USE ON THE FLAT SURFACE OF
ENCLOSURES RATED TYPE 2, 3, 3R, 3S, 4, 4X AND 12



METAL SIDE



RUBBER SIDE



SECTION A-A

Bonded Sealing Washer												
Part#	Suitable to seal Fastener Size	A	B	C	D	E	F	G	Hole Size			
									Ref	Ref	Ref	Recommended
									Min	Max		
SCE-BSW38SS	0.38"	0.74	0.102	0.36	0.41	0.13	0.69	0.36	0.437	50	100	
SCE-BSW31SS	0.31"	0.74	0.102	0.36	0.35	0.13	0.69	0.29	0.344	30	60	
SCE-BSW25SS	#14 / 0.25"	0.63	0.102	0.36	0.28	0.13	0.59	0.23	0.281	25	50	
SCE-BSW19SS	#10 / 0.19"	0.50	0.102	0.36	0.2	0.13	0.46	0.17	0.218	15	30	

SAGINAW CONTROL & ENGINEERING

**SEALING WASHER
ASSEMBLY DRAWING**

SIZE A	DWG. NO. SealingWasher.SLDDRW	REV.
		SHEET 1 OF 1