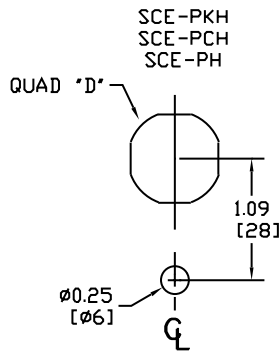


# HOLE LAYOUT OF STANDARD DOOR HARDWARE

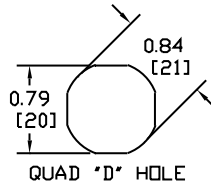


FOR 5.00 [127]  
OR 7.00 [178]  
HANDLES

SCE-DLWKC  
SCE-DLWKF  
SCE-DL7SC  
SCE-DLCA  
SCE-DLKL D

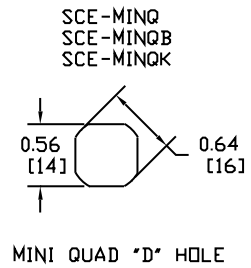
SCE-PLHG  
SCE-DLSSB  
SCE-DLSB  
SCE-NLTH  
SCE-DLSBB

SCE-KLWN  
SCE-DL7TE  
SCE-ELPL  
SCE-ELKL  
SCE-PLWKB  
SCE-KLWNB



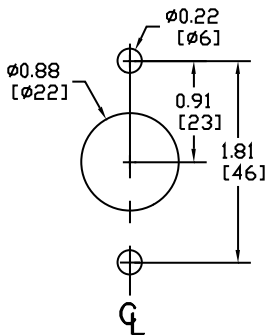
1.25 [32] OFF THE INSIDE  
FLANGE TO THE CENTER OF THE  
LATCH.

ENVIROLINE ENCLOSURES WITH  
0.88 [22] FLANGE, 2.06 [52] OFF  
EDGE OF DOOR TO CENTER OF  
LATCH.

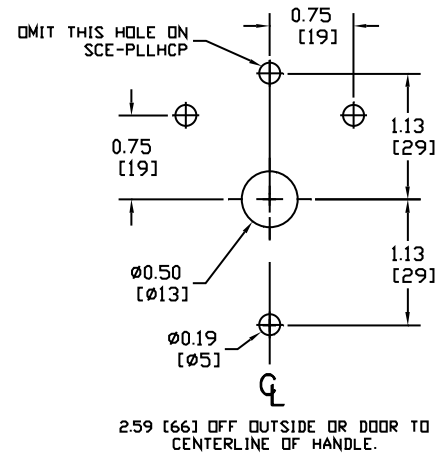
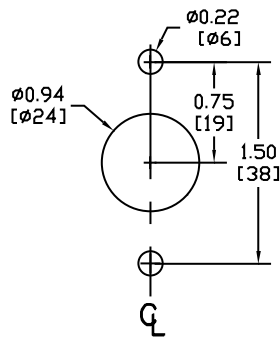


SCE-PLLHSS  
SCE-PLRHSS  
SCE-PLLHCP

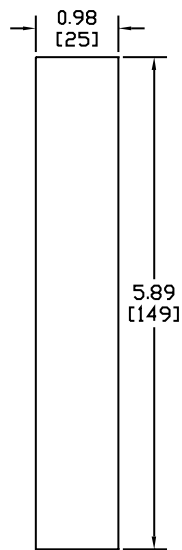
SCE-KLLH  
SCE-KLRH  
SCE-NLLH  
SCE-NLRH



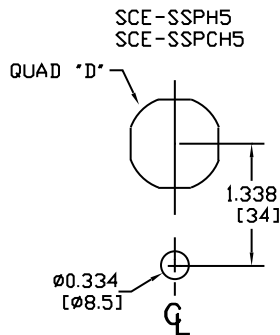
SCE-KLTH



SCE-FSH2, FSH4, FSH6, &  
FSH8 FLUSH SWING



HANDLE 2.08 [53] TO  
CENTER OF CUTOUT.



FOR 5.00 [127]  
S.S. HANDLES

