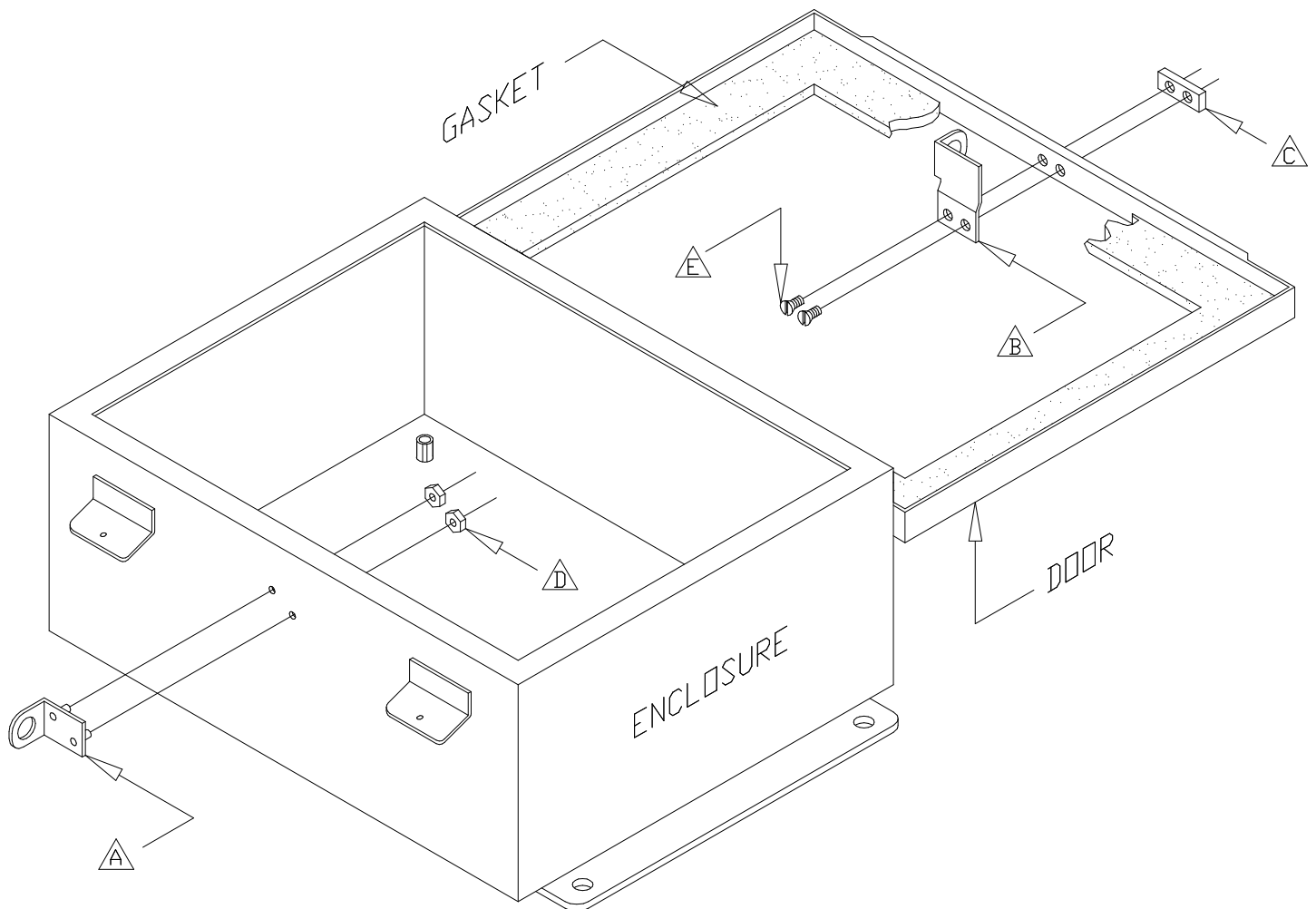


PADLOCK KIT FOR JUNCTION BOXES

SCE-PLKJIC



1. POSITION NUT PLATE (ITEM C) ON LIP OF THE DOOR AS SHOWN ON NEXT PAGE. MARK THE HOLE LOCATIONS; REMOVE NUT PLATE; CENTER PUNCH AND DRILL TWO 0.20 [5] DIA. HOLES THROUGH THE DOOR LIP.
2. INSERT COVER STAPLE (ITEM B) BEHIND EDGE OF GASKET, TAKING CARE NOT TO DAMAGE GASKET. ATTACH COVER STAPLE TO DOOR FLANGE USING NUT PLATE AND TWO FLATHEAD SCREWS.
3. CLAMP DOOR DOWN; POSITION DRILL TEMPLATE UNDER COVER STAPLE AND TAPE TO BODY. RAISE DOOR, CENTER PUNCH MARKS ON TEMPLATE. REMOVE TEMPLATE, AND DRILL TWO 0.17 [4] DIA. HOLES.
4. ATTACH BODY STAPLE (ITEM A) TO ENCLOSURE BODY USING TWO 6-32 KEPS NUTS.