

DOOR ALIGNMENT

LEVEL DOES NOT ALWAYS MEAN FLAT

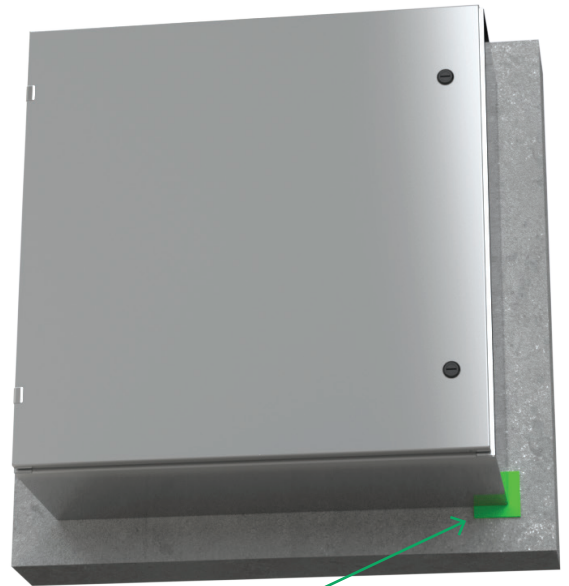
IF ENCLOSURES ARE NOT EVENLY INSTALLED, MOUNTED, SUPPORTED AND SECURED, THE BODY WILL TWIST AND CONFORM TO SURFACE IT'S RESTING ON AND/OR MOUNTED TO.

IF THE SURFACE, WALL OR FLOOR HAS HIGHS, LOWS OR ANY IRREGULARITIES AS MOST SURFACES DO, IT WILL SHOW UP IN THE DOOR ALIGNMENT.

IF THE BODY OF THE ENCLOSURE IS NOT EVEN, YOUR DOORS WILL LOOK UNEVEN.

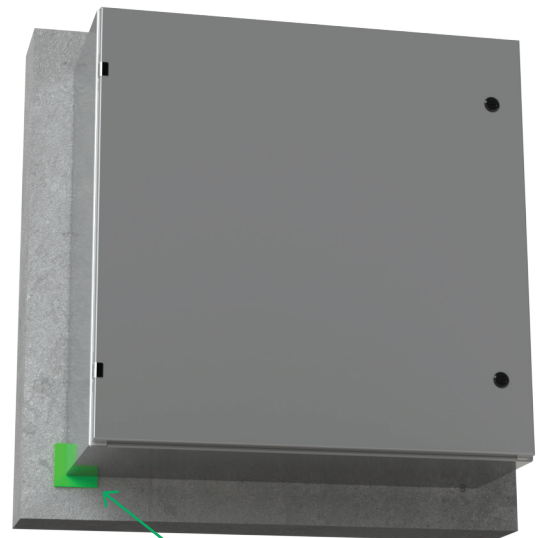
WALL MOUNTED ENCLOSURES

IF LATCHING SIDE IS HIGH



ADD SHIM HERE

IF LATCHING SIDE IS LOW



ADD SHIM HERE

FLOOR MOUNTED ENCLOSURES



IF LATCH SIDE IS HIGH



ADD SHIM HERE



IF LATCH SIDE IS LOW



ADD SHIM HERE



IF LATCH SIDE IS HIGH



ADD SHIM HERE



IF LATCH SIDE IS LOW



ADD SHIM HERE